

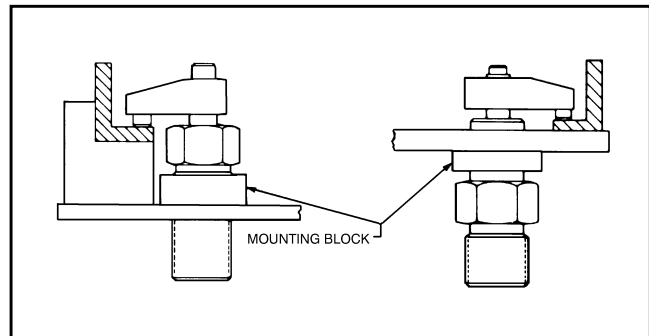
# New Threaded Body Rota-Shaft for Hydraulic Applications



An unusually compact high pressure hydraulic clamp for use with auxiliary power sources or intensifiers. 90° right- or left-hand rotation standard. Clamping finger included.

**MODEL:** E78138 has a maximum of 1800 psi.  
Clamping force is equal to  $.884 \times \text{psi}$ .

**MODEL:** E91678 has a maximum of 2100 psi.  
Clamping force is equal to  $.353 \times \text{psi}$ .



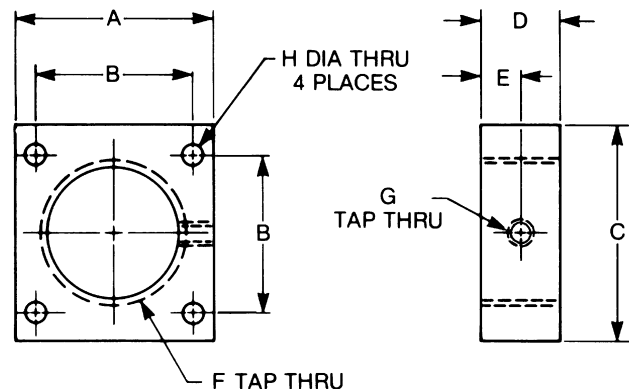
## DESIGN FEATURES

- ❑ Generates higher pressures in limited space
- ❑ Available with spring return or double-acting
- ❑ Threaded body for ease of installation
- ❑ Built with both right- and left-hand rotation for easy conversion
- ❑ Hardened alloy steel shaft
- ❑ Straight pipe threads furnished as standard; NPT available with furnished adaptor

## APPLICATION

Typically used in pull-type clamping situations where greater forces are required in confined or tight area.

## MOUNTING BLOCK FOR THREADED BODY



CAD FILE NAME	PART NUMBER	DIMENSIONS								
		A	B	C	D	E	F	G	H	
E-91678-MT	<b>E-91678-MT</b>	2.00	1.562	2.00	.50	.25	1-3/8-18	#10-32	7/32	
E-78138-MT	<b>E-78138-MT</b>	2.75	2.125	2.75	1.00	.50	1-7/8-16	1/4-20	9/32	

CAD Directory  
Linear-Rotary\THDBody

# New Threaded Body Rota Shaft for Hydraulic Applications

## High Pressure



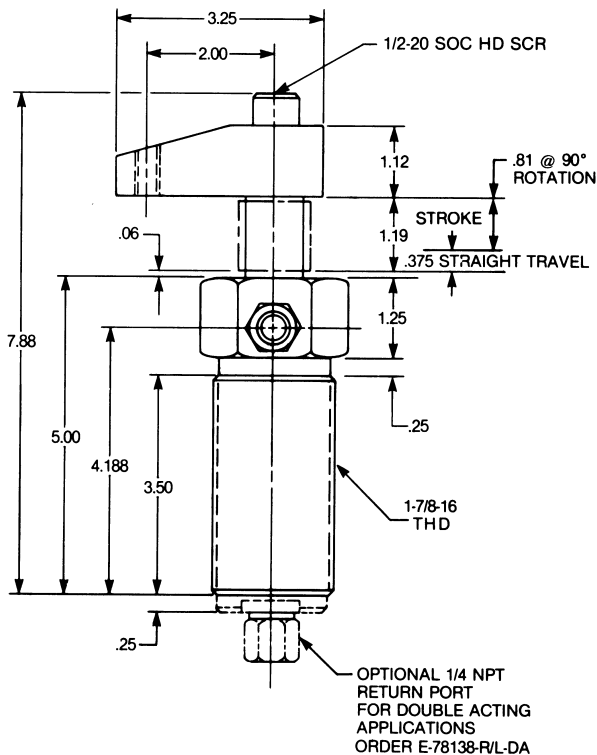
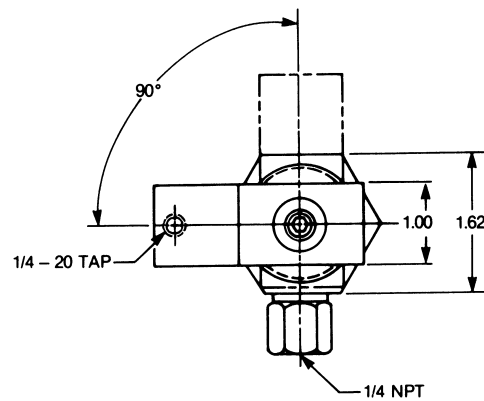
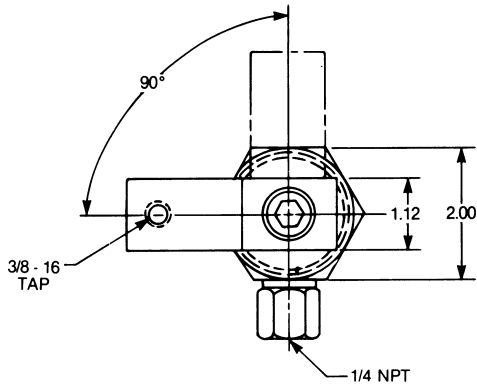
Click to download CAD File (STP Format) 2dwdg & 3dwdg visit eandesp.com

**CAD File Name = E78138DA (DOUBLE ACTING)**  
**E78138 (SINGLE ACTING)**

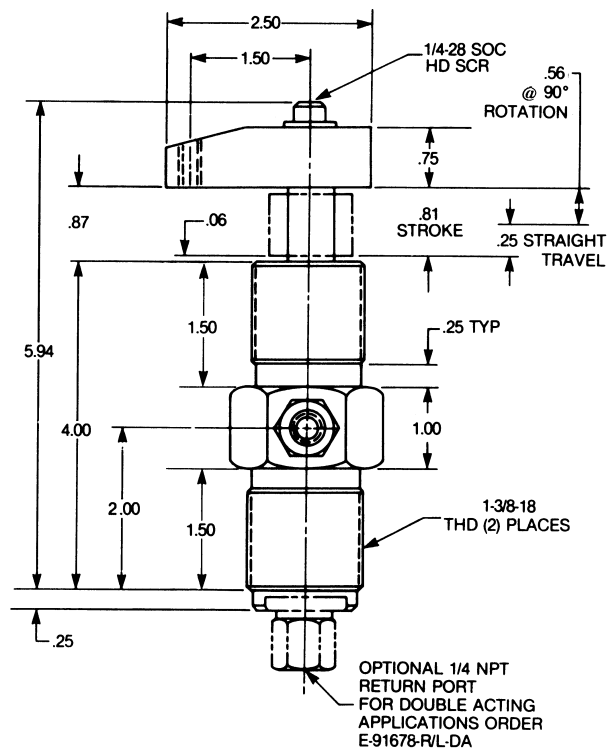
**Part No. E-78138-R/L (SINGLE ACTING)**  
**E-78138-R/L-DA (DOUBLE ACTING)**

**CAD File Name = E91678DA (DOUBLE ACTING)**  
**E91678 (SINGLE ACTING)**

**Part No. E-91678-R/L (SINGLE ACTING)**  
**E-91678-R/L-DA (DOUBLE ACTING)**



**7/8 ROD DIA**  
**1-3/8 BORE DIA**



**9/16 ROD DIA**  
**7/8 BORE DIA**

Linear/Rotary Motion