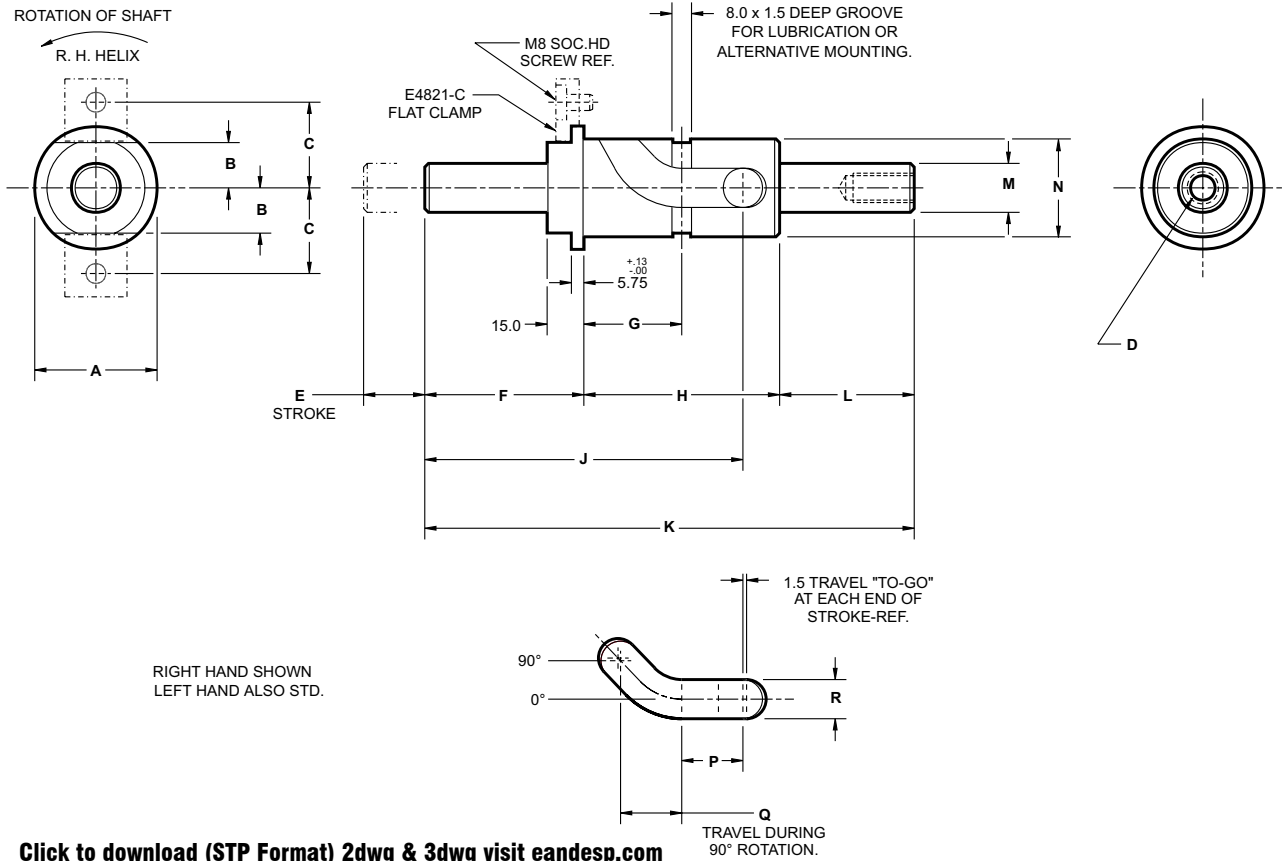
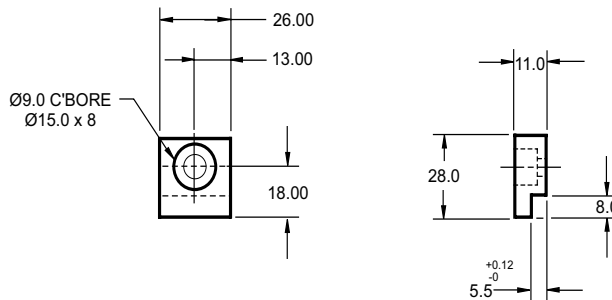


Metric Non - Powered Rota - Shaft Clamps



Click to download (STP Format) 2dwg & 3dwg visit eandesp.com

CAD FILE NAME	PART NUMBER	DIMENSIONS															
		A	B	C	D	E	F	G	H	J	K	L	M	N	P	Q	R
EM20206	EM-20206-R/L	50.0	18.0	36	M12 x 1.25 TAP 25.0 DEEP	50.0	65.0	35.0	75.0	125.0	200.0	60.0	20.0 DIA.	40.0 DIA.	25.0	25.0	16.0
EM25206	EM-25206-R/L	65.0	25.0	43	M16 x 1.50 TAP 30.0 DEEP	60.0	80.0	50.0	100.0	160.0	250.0	70.0	25.0 DIA.	50.0 DIA.	30.0	30.0	20.0
EM35206	EM-35206-R/L	65.0	25.0	43	M20 x 1.50 TAP 30.0 DEEP	75.0	80.0	60.0	120.0	180.0	285.0	85.0	35.0 DIA.	55.0 DIA.	40.0	35.0	20.0
EM50206	EM-50206-R/L	90.0	38.0	56	M27 x 2.0 TAP 30.0 DEEP	85.0	80.0	65.0	125.0	185.0	300.0	95.0	50.0 DIA.	75.0 DIA.	40.0	45.0	20.0



Part No. E-4821-C