



## METRIC TOLERANCE DATA & STANDARD SPECIFICATION

MATERIAL	TOLERANCE	HEAT TREAT
HARDENED & GROUND 8620	h9	12mm DIA OR LESS R "C" 50-52 .6 - .9 DEEP
STAINLESS 300 SERIES		N/A
MILD STEEL 8620		N/A
PREHARDENED A311 G & P		R "C" 22-30
		16mm DIA AND UP R "C" 58-60 .9 - 1.1 DEEP

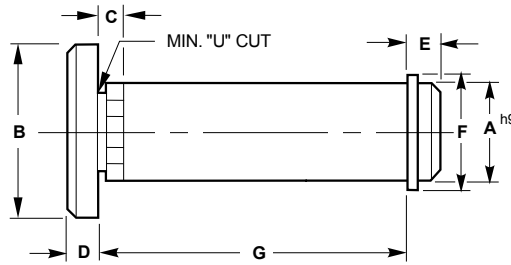
ALL E&E FIXTURE AND CLEVIS PINS ARE MADE TO THE FOLLOWING SPECIFICATIONS:

**LENGTH** = NOMINAL +.6

**KNURL** = NOMINAL +.2

**LUBE OPTIONS** = NOT AVAILABLE ON 6mm-8mm DIA PINS. 10mm-12mm DIA PINS ARE FURNISHED WITH A M6x1 TAPPED HOLE. 10mm DIA PINS CAN ONLY BE TAPPED ON THE END OPPOSITE THE RETAINER GROOVE. FOR PINS 16mm DIA OR LARGER A 1/8 BSPT IS FURNISHED.

# Metric Head Type Fixture Pin w/Snap Ring



DIMENSIONAL INFORMATION							
CAD FILE NAME	A	B	C	D	E	F	*G 5mm INCR
MKSFIXTPIN	6.0	10.0	6.0	3.0	3.0	11.4	25-50
	8.0	11.0	6.0	3.0	3.0	13.2	25-50
	10.0	13.0	6.0	3.0	3.0	17.3	25-75
	12.0	16.0	6.0	3.0	4.0	20.8	25-75
	16.0	19.0	6.0	4.0	5.0	24.4	25-75
	20.0	24.0	6.0	4.0	6.0	29.0	25-100
	25.0	30.0	6.0	5.0	6.0	38.9	40-125
	30.0	36.0	6.0	5.0	5.0	42.4	40-125
	35.0	41.0	6.0	6.0	6.0	48.8	50-150
40.0	48.0	6.0	6.0	6.0	53.3	50-150	

\*G = LENGTH IN 5mm INCREMENTS, OTHER LENGTHS AVAILABLE UPON REQUEST

H = 1/2 G UNLESS OTHERWISE SPECIFIED

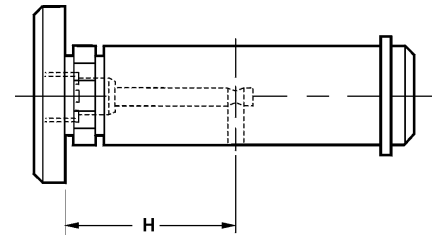
H1 = LOCATION OF ADDITIONAL CROSSHOLE IF REQUIRED

### LUBE OPTION:

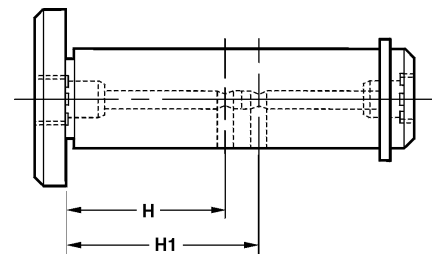
ADD "PT", "PT2" OR "RPT" AFTER PIN TYPE

Type	Description
MS	HARDENED AND GROUND, SMOOTH
MSS	STAINLESS, SMOOTH
MSU	MILD STEEL, SMOOTH
MSP	PREHARDENED, SMOOTH
MK	HARDENED AND GROUND, KNURLED
MKS	STAINLESS, KNURLED
MKU	MILD STEEL, KNURLED
MKP	PREHARDENED, KNURLED

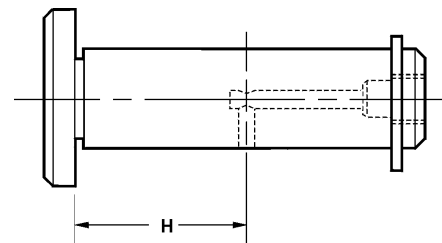
### PIPE TAP LUBE OPTION PT



### PIPE TAP LUBE OPTION = PT 2



### PIPE TAP LUBE OPTION = RPT



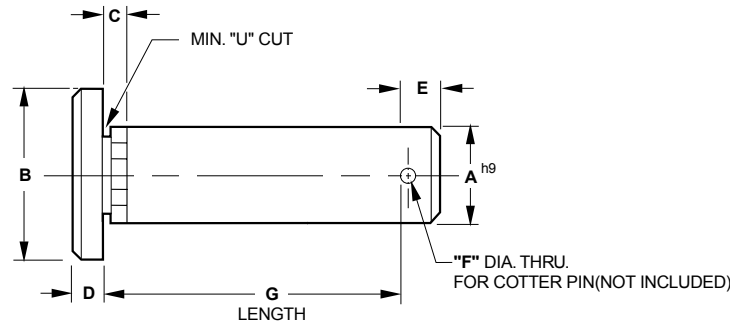
### ORDERING INFORMATION:

Specify: Pin Dia — Length — Type — Lube Option — "H" Dim — "H1" Dim

Example: 20-45-MS-PT

### "Stretch"

The shortest standard component is given. You may "Stretch" the unit to the desired length.



## HEAD TYPE FIXTURE PIN WITH COTTER PIN HOLE

Click to download CAD File (STP Format) 2dwg & 3dwg visit [eandesp.com](http://eandesp.com)

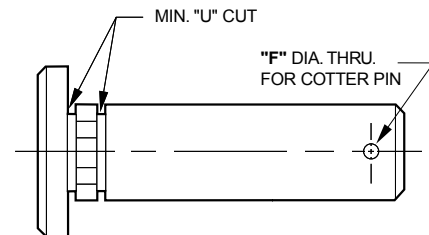
DIMENSIONAL INFORMATION							
CAD FILE NAME	A	B	C	D	E	F	*G 5mm INCR
MKSCLEVPIN	6.0	10.0	6.0	3.0	5.0	2.5	25-50
	8.0	11.0	6.0	3.0	5.0	2.5	25-50
	10.0	13.0	6.0	3.0	5.0	2.5	25-75
	12.0	16.0	6.0	3.0	6.0	3.0	25-75
	16.0	19.0	6.0	4.0	6.0	3.0	25-75
	20.0	24.0	6.0	4.0	6.0	3.0	25-100
	25.0	30.0	6.0	5.0	6.0	3.0	40-125
	30.0	36.0	6.0	5.0	8.0	5.0	40-125
	35.0	41.0	6.0	6.0	10.0	6.0	50-150
40.0	48.0	6.0	6.0	10.0	6.0	50-150	

\*G = LENGTH IN 5mm INCREMENTS, OTHER LENGTHS AVAILABLE UPON REQUEST

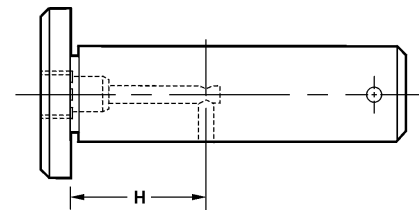
H = 1/2 G UNLESS OTHERWISE SPECIFIED

### LUBE OPTION:

ADD "PT", AFTER PIN TYPE



### PIPE TAP LUBE OPTION = PT



Type	Description
MSC	HARDENED AND GROUND, SMOOTH COTTER
MSCS	STAINLESS, SMOOTH, COTTER
MSCU	MILD STEEL, SMOOTH, COTTER
MSCP	PREHARDENED, SMOOTH, COTTER
MKC	HARDENED AND GROUND, KNURLED, COTTER
MKCS	STAINLESS, KNURLED, COTTER
MKCU	MILD STEEL, KNURLED, COTTER
MKCP	PREHARDENED, KNURLED, COTTER

### ORDERING INFORMATION:

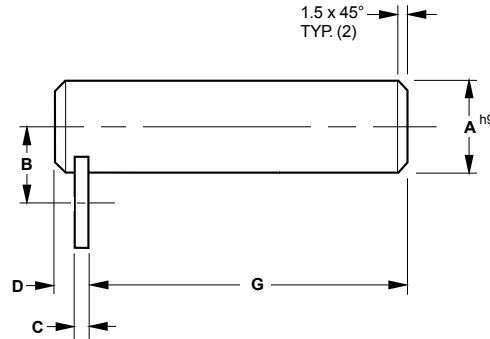
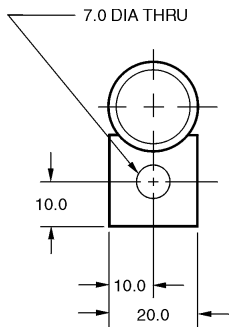
Specify: Pin Dia — Length — Type — Lube Option — "H" Dim

Example: 12-55-MKCP-PT

### "Stretch"

The shortest standard component is given. You may "Stretch" the unit to the desired length.

# Metric Headless Fixture Pin with Retainer



## METRIC HEADLESS FIXTURE PIN WITH RETAINER

Click to download CAD File (STP Format) 2dwg & 3dwg visit [eandesp.com](http://eandesp.com)

DIMENSIONAL INFORMATION					
CAD FILE NAME	A	B	C	D	*G 5mm INCR
MHRFIXTPIN	6.0	10.0	3.0	6.0	25-50
	8.0	11.0	3.0	6.0	25-50
	10.0	12.0	3.0	6.0	25-75
	12.0	13.0	3.0	6.0	25-75
	16.0	15.0	3.0	6.0	25-75
	20.0	17.0	3.0	6.0	25-100
	25.0	19.5	3.0	6.0	40-125
	30.0	22.0	6.0	12.0	40-125
	35.0	24.5	6.0	12.0	50-150
	40.0	27.0	6.0	12.0	50-150
	45.0	29.5	6.0	12.0	75-200
	50.0	32.0	6.0	12.0	75-200
	60.0	37.0	6.0	12.0	75-200
	75.0	44.5	6.0	12.0	100-300
90.0	52.0	6.0	12.0	150-350	
100.0	57.0	6.0	12.0	150-350	

\*G = LENGTH IN 5mm INCREMENTS, OTHER LENGTHS AVAILABLE UPON REQUEST

H = 1/2 G UNLESS OTHERWISE SPECIFIED

H1 = LOCATION OF ADDITIONAL CROSSHOLE IF REQUIRED

### LUBE OPTION:

ADD "PT" "PT2" OR "RPT" AFTER PIN TYPE

### \*RETAINER OPTION:

RETAINER #EM-1R SUPPLIED ON 6.0 – 25.0 DIA PINS AND #EM-2R SUPPLIED ON 30-100 DIA PINS UNLESS OTHERWISE SPECIFIED. DO NOT SPECIFY WHEN STANDARD RETAINER IS REQUIRED. SEE PAGE E-55 FOR ADDITIONAL RETAINER OPTIONS.

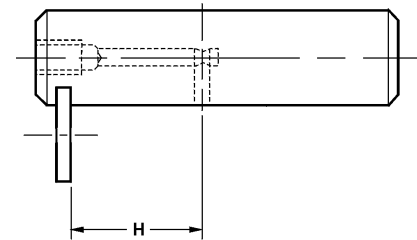
### ORDERING INFORMATION:

Specify: Pin Dia — Length — Type — Lube Option —  
— "H" Dim — "H1" Dim — \*Retainer Option

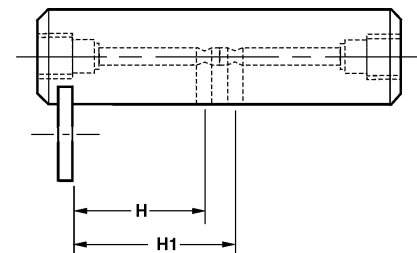
Example: 12-60-MHR-PT-EM-1RD

CAD Directory  
Mach-Tool\Met-FixtPin

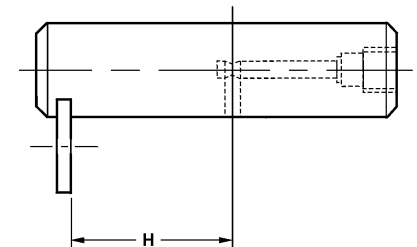
### PIPE TAP LUBE OPTION = PT



### PIPE TAP LUBE OPTION = PT2



### PIPE TAP LUBE OPTION = RPT



### Type

MHR  
MHRs  
MHRU  
MHRP

### Description

HARDENED AND GROUND  
STAINLESS  
MILD STEEL  
PREHARDENED, GROUND  
AND POLISHED

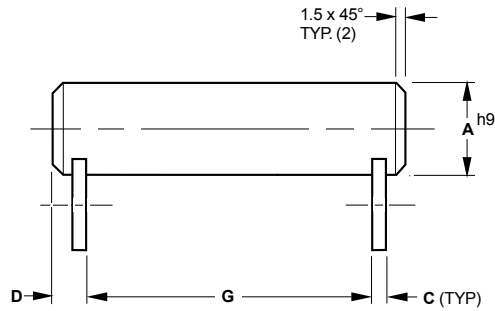
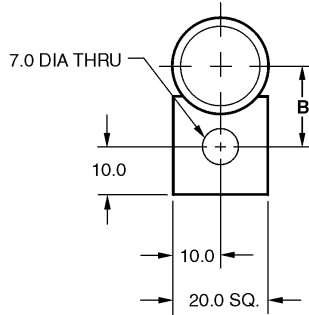
### "Stretch"

The shortest standard component is given. You may "Stretch" the unit to the desired length.

# Metric Headless Fixture Pin with Double Retainer



E&ESP

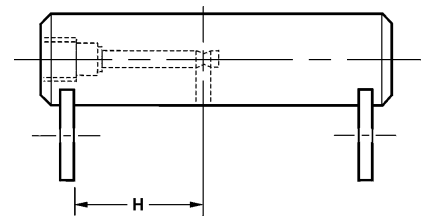


## METRIC HEADLESS FIXTURE PIN WITH DOUBLE RETAINER

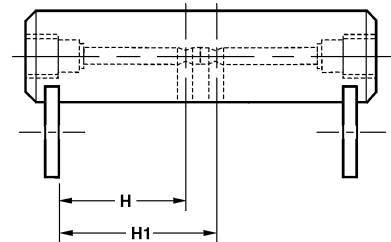
Click to download CAD File (STP Format) 2dwg & 3dwg visit eandesp.com

DIMENSIONAL INFORMATION					
CAD FILE NAME	A	B	C	D	*G 5mm INCR
MHDRFIXTPIN	6.0	10.0	3.0	6.0	25-50
	8.0	11.0	3.0	6.0	25-50
	10.0	12.0	3.0	6.0	25-75
	12.0	13.0	3.0	6.0	25-75
	16.0	15.0	3.0	6.0	25-75
	20.0	17.0	3.0	6.0	25-100
	25.0	19.5	3.0	6.0	40-125
	30.0	22.0	6.0	12.0	40-125
	35.0	24.5	6.0	12.0	50-150
	40.0	27.0	6.0	12.0	50-150
	45.0	29.5	6.0	12.0	75-200
	50.0	32.0	6.0	12.0	75-200
	60.0	37.0	6.0	12.0	75-200
	75.0	44.5	6.0	12.0	100-300
90.0	52.0	6.0	12.0	150-350	
100.0	57.0	6.0	12.0	150-350	

PIPE TAP LUBE OPTION = PT



PIPE TAP LUBE OPTION = PT2



\*G = LENGTH IN 5mm" INCREMENTS, OTHER LENGTHS AVAILABLE UPON REQUEST

H = 1/2 G UNLESS OTHERWISE SPECIFIED

H1 = LOCATION OF ADDITIONAL CROSSHOLE IF REQUIRED

### LUBE OPTION:

ADD "PT" OR "PT2" AFTER PIN TYPE

### \*RETAINER OPTION:

RETAINER #EM-1R SUPPLIED ON 6-25 DIA PINS AND #EM-2R SUPPLIED ON 30-100 DIA PINS UNLESS OTHERWISE SPECIFIED. DO NOT SPECIFY WHEN STANDARD RETAINER IS REQUIRED. SEE PAGE E-55 FOR ADDITIONAL RETAINER OPTIONS.

## ORDERING INFORMATION

Specify: Pin Dia — Length — Type — Lube Option — "H" Dim — "H1" Dim — \*Retainer Option

Example: 12-60-MHDR-PT-EM-IRD

### Type

**MHDR**  
**MHDRS**  
**MHDRU**  
**MHDRP**

### Description

HARDENED AND GROUND, DOUBLE RETAINER  
STAINLESS, DOUBLE RETAINER  
MILD STEEL, DOUBLE RETAINER  
PREHARDENED, GROUND AND POLISHED, DOUBLE RETAINER

CAD Directory  
Mach-Tool\Met-FixtPin

### "Stretch"

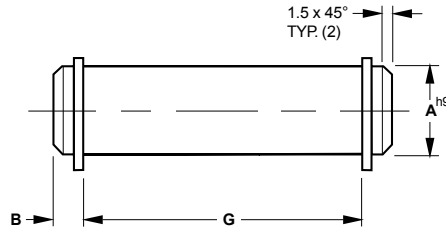
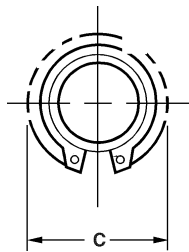
The shortest standard component is given. You may "Stretch" the unit to the desired length.

# Metric Headless Fixture Pin with Double Snap Ring



E&ESP

Metric

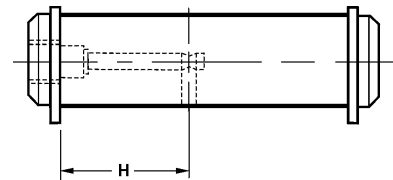


## METRIC HEADLESS FIXTURE PIN WITH DOUBLE SNAP RING

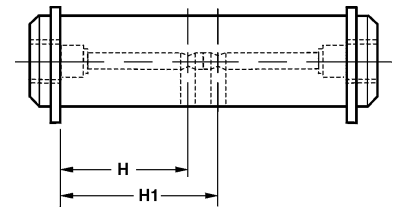
Click to download CAD File (STP Format) 2dwg & 3dwg visit eandesp.com

DIMENSIONAL INFORMATION				
CAD FILE NAME	A	B	C	*G 5mm INCR
MSXFIXTPIN	6.0	3.0	11.4	25-50
	8.0	3.0	13.2	25-50
	10.0	3.0	17.3	25-75
	12.0	4.0	20.8	25-75
	16.0	5.0	24.4	25-75
	20.0	6.0	29.0	25-100
	25.0	6.0	38.9	40-125
	30.0	5.0	42.4	40-125
	35.0	6.0	48.8	50-150
	40.0	6.0	53.3	50-150
	45.0	6.0	59.2	75-200
	50.0	6.0	64.5	75-200
60.0	8.0	76.5	75-200	

PIPE TAP LUBE OPTION = PT



PIPE TAP LUBE OPTION = PT2



\*G = LENGTH IN 5mm INCREMENTS, OTHER LENGTHS AVAILABLE UPON REQUEST

H = 1/2 G UNLESS OTHERWISE SPECIFIED

H1 = LOCATION OF ADDITIONAL CROSSHOLE IF REQUIRED

### LUBE OPTION:

ADD "PT" OR "PT2" AFTER PIN TYPE

Type	Description
MSX	HARDENED AND GROUND, DOUBLE SNAP RING
MSXS	STAINLESS, DOUBLE SNAP RING
MSXU	MILD STEEL, DOUBLE SNAP RING
MSXP	PREHARDENED, GROUND AND POLISHED, DOUBLE SNAP RING

### ORDERING INFORMATION:

Specify: Pin Dia — Length — Type —  
Lube Option — "H" Dim —  
"H1" Dim

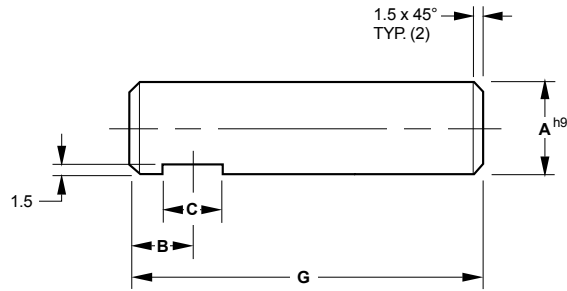
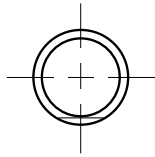
Example: 10-45-MSXP-PT2-15-30

CAD Directory  
Mach-Tool\Met-FixtPin

### "Stretch"

The shortest standard component is given. You may "Stretch" the unit to the desired length.

# Metric Set Screw Fixture Pin



## METRIC SET SCREW FIXTURE PIN

Click to download CAD File (STP Format) 2dwg & 3dwg visit eandesp.com

DIMENSIONAL INFORMATION				
CAD FILE NAME	A	B	C	*G 5mm INCR
MHSFIXTPIN	6.0	*	6.0	25-50
	8.0	*	10.0	25-50
	10.0	*	10.0	25-75
	12.0	*	10.0	25-75
	16.0	*	15.0	25-75
	20.0	*	15.0	25-100
	25.0	*	15.0	40-125
	30.0	*	15.0	40-125
	35.0	*	15.0	50-150
	40.0	*	15.0	50-150
	45.0	*	15.0	75-200
	50.0	*	15.0	75-200
	60.0	*	15.0	75-200
	75.0	*	15.0	100-300
90.0	*	15.0	150-350	
100.0	*	15.0	150-350	

\*B = SPECIFY LOCATION

\*G = LENGTH IN 5mm INCREMENTS, OTHER LENGTHS AVAILABLE UPON REQUEST

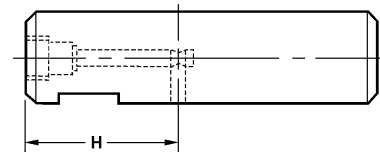
H = 1/2 G UNLESS OTHERWISE SPECIFIED

H1 = LOCATION OF ADDITIONAL CROSSHOLE IF REQUIRED

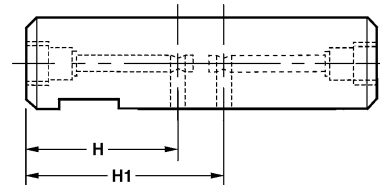
### LUBE OPTION:

ADD "PT", "PT2" OR "RPT" AFTER PIN TYPE

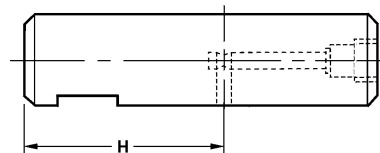
PIPE TAP LUBE OPTION = PT



PIPE TAP LUBE OPTION = PT2



PIPE TAP LUBE OPTION = RPT



### ORDERING INFORMATION:

Specify: Pin Dia — Length — Type —  
Lube Option — "B" Dim —  
"H" Dim — "H1" Dim

Example: 12-65-MHS-PT-10-25

### Type

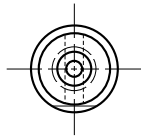
### Description

MHS	HARDENED AND GROUND
MHSS	STAINLESS
MHSU	MILD STEEL
MHSP	PREHARDENED, GROUND AND POLISHED

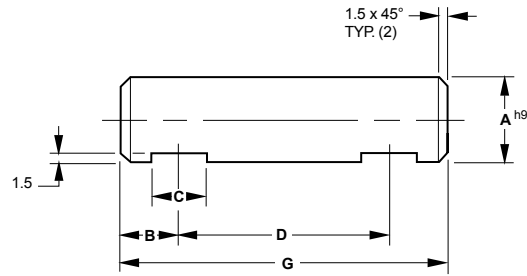
### "Stretch"

The shortest standard component is given. You may "Stretch" the unit to the desired length.

# Metric Set Screw Fixture Pin with Double Flat



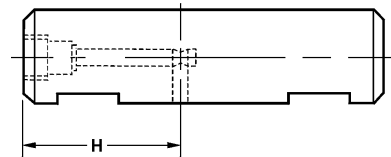
METRIC SET SCREW FIXTURE PIN WITH DOUBLE FLAT



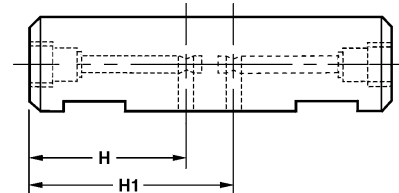
Click to download CAD File (STP Format) 2dwg & 3dwg visit eandesp.com

DIMENSIONAL INFORMATION					
CAD FILE NAME	A	B	C	D	*G 5mm INCR
MHDSFIXTPIN	6.0	*	6.0	*	25-50
	8.0	*	10.0	*	35-50
	10.0	*	10.0	*	35-75
	12.0	*	10.0	*	35-75
	16.0	*	15.0	*	45-75
	20.0	*	15.0	*	45-100
	25.0	*	15.0	*	45-125
	30.0	*	15.0	*	45-125
	35.0	*	15.0	*	50-150
	40.0	*	15.0	*	50-150
	45.0	*	15.0	*	75-200
	50.0	*	15.0	*	75-200
	60.0	*	15.0	*	75-200
	75.0	*	15.0	*	100-300
	90.0	*	15.0	*	150-350
100.0	*	15.0	*	150-350	

PIPE TAP LUBE OPTION = PT



PIPE TAP LUBE OPTION = PT2



- \*B = SPECIFY LOCATION AFTER PIN TYPE
- \*G = LENGTH IN 5mm INCREMENTS, OTHER LENGTHS AVAILABLE UPON REQUEST
- \*D = SPECIFY DISTANCE BETWEEN CENTER LINE OF FLATS
- H = LOCATION OF CROSSHOLE
- H1 = LOCATION OF ADDITIONAL CROSSHOLE IF REQUIRED
- LUBE OPTION:**
- ADD "PT" OR "PT2" AFTER PIN TYPE

Type	Description
MHDS	HARDENED AND GROUND
MHDS	STAINLESS
MHDSU	MILD STEEL
MHDS	PREHARDENED, GROUND AND POLISHED

## ORDERING INFORMATION:

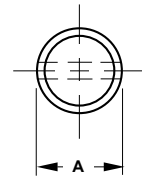
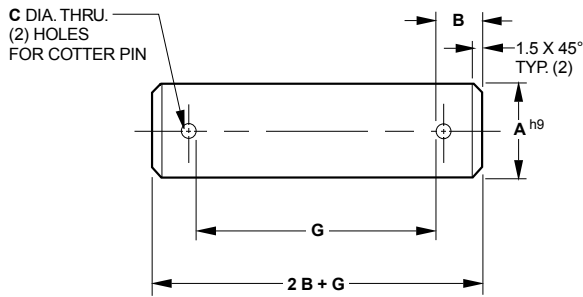
Specify: Pin Dia — Length — Type — Lube Option — "B" Dim — "D" Dim — "H" Dim — "H1" Dim

Example: 40-125-MHDS-PT-1-20-50

**"Stretch"**  
The shortest standard component is given. You may "Stretch" the unit to the desired length.



# Metric Headless Fixture Pin with Double Cotter Pin



## METRIC HEADLESS FIXTURE PIN WITH DOUBLE COTTER PIN

Click to download CAD File (STP Format) 2dwg & 3dwg visit eandesp.com

DIMENSIONAL INFORMATION				
CAD FILE NAME	A	B	C	*G 5mm INCR
MHDCFIXTPIN	6.0	5.0	3.0	25-50
	8.0	5.0	3.0	25-50
	10.0	5.0	3.0	25-75
	12.0	6.0	3.7	25-75
	16.0	6.0	3.7	25-75
	20.0	6.0	4.5	25-100
	25.0	6.0	4.5	40-125
	30.0	8.0	5.0	40-125
	35.0	10.0	5.5	50-150
	40.0	10.0	6.8	50-150
	45.0	10.0	6.8	75-200
	50.0	10.0	8.5	75-200
	60.0	10.0	8.5	75-200
	70.0	13.0	10.5	100-300
	75.0	13.0	10.5	100-300

\*G = LENGTH IN 5mm INCREMENTS, OTHER LENGTHS AVAILABLE UPON REQUEST

Type	Description
MHDC	HARDENED AND GROUND
MHDCS	STAINLESS
MHDCU	MILD STEEL
MHDCP	PREHARDENED, GROUND AND POLISHED

### ORDERING INFORMATION:

Specify: Pin Dia. — Length — Type

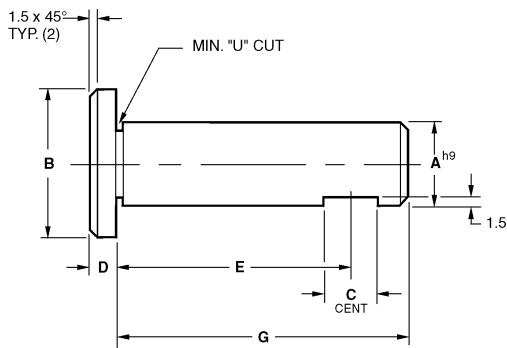
Example: 16-45-MHDCP

#### “Stretch”

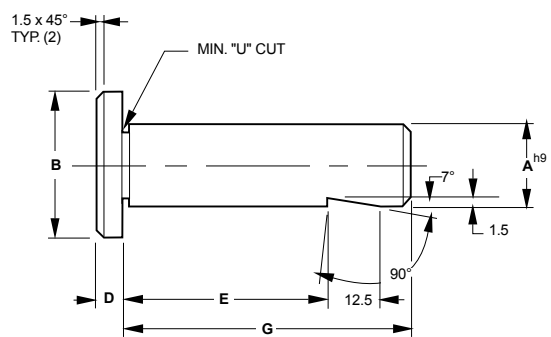
The shortest standard component is given. You may “Stretch” the unit to the desired length.

# Metric Head Type Fixture Pin with Set Screw Flat & Whistle Notch

METRIC HEAD TYPE PIN WITH SET SCREW  
FLAT "MSF"



METRIC HEAD TYPE PIN WITH  
WHISTLE NOTCH "MSW"

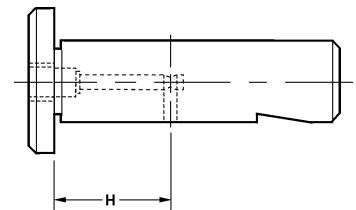


METRIC HEAD TYPE FIXTURE PIN WITH SET SCREW  
FLAT OR WHISTLE NOTCH

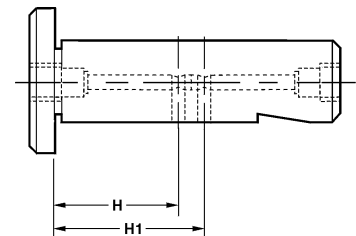
Click to download CAD File (STP Format) 2dwg & 3dwg visit [eandesp.com](http://eandesp.com)

DIMENSIONAL INFORMATION					
CAD FILE NAME	A	B	C	D	*G 5mm INCR
MSFFIXTPIN OR MSWFIXTPIN	6.0	10.0	6.0	3.0	25-50
	8.0	11.0	10.0	3.0	25-50
	10.0	13.0	10.0	3.0	25-75
	12.0	16.0	10.0	3.0	25-75
	16.0	19.0	15.0	4.0	25-75
	20.0	24.0	15.0	4.0	25-100
	25.0	30.0	15.0	5.0	40-125
	30.0	36.0	15.0	5.0	40-125
35.0	41.0	15.0	6.0	50-150	
40.0	48.0	15.0	6.0	50-150	

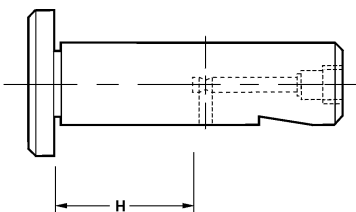
PIPE TAP LUBE OPTION = PT



PIPE TAP LUBE OPTION = PT2



PIPE TAP LUBE OPTION = RPT



**E** = LOCATION OF FLAT OR WHISTLE NOTCH

**\*G** = LENGTH IN 5mm INCREMENTS, OTHER LENGTHS  
AVAILABLE UPON REQUEST

**H** = 1/2 G UNLESS OTHERWISE SPECIFIED

**H1** = LOCATION OF ADDITIONAL CROSSHOLE IF  
REQUIRED

**LUBE OPTION:**

ADD "PT", "PT2" OR "RPT" AFTER PIN TYPE

**Type**

**Description**

<b>MSF</b>	HARDENED AND GROUND, SET SCREW
<b>MSFS</b>	STAINLESS, SET SCREW
<b>MSFU</b>	MILD STEEL, SET SCREW
<b>MSFP</b>	PREHARDENED, SET SCREW
<b>MSW</b>	HARDENED AND GROUND, WHISTLE NOTCH
<b>MSWS</b>	STAINLESS, WHISTLE NOTCH
<b>MSWU</b>	MILD STEEL, WHISTLE NOTCH
<b>MSWP</b>	PREHARDENED, WHISTLE NOTCH

**ORDERING INFORMATION:**

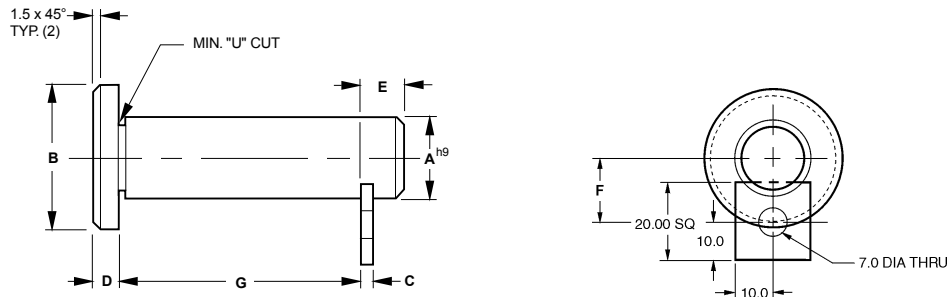
Specify: Pin Dia. — Length — Type —  
Lube Option — "E" Dim —  
"H" Dim — "H1" Dim

Example: 40-120-MSF-RPT-100-80-60

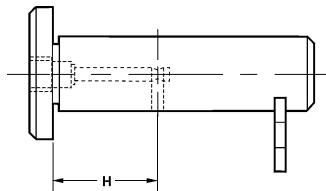
**"Stretch"**

The shortest standard component is given. You may "Stretch" the unit to the desired length.

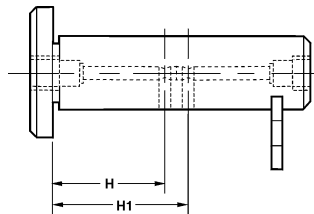
# Metric Head Type Fixture Pin with Retainer



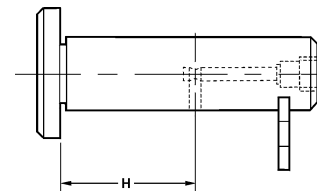
PIPE TAP LUBE OPTION = PT



PIPE TAP LUBE OPTION = PT2



PIPE TAP LUBE OPTION = RPT



## METRIC HEAD TYPE FIXTURE PIN WITH RETAINER

Click to download CAD File (STP Format) 2dwg & 3dwg visit [eandesp.com](http://eandesp.com)

DIMENSIONAL INFORMATION							
CAD FILE NAME	A	B	C	D	E	F	*G 5mm" INCR
MSRFIXTPIN	6.0	10.0	3.0	3.0	6.0	10.0	25-50
	8.0	11.0	3.0	3.0	6.0	11.0	25-50
	10.0	13.0	3.0	3.0	6.0	12.0	25-75
	12.0	16.0	3.0	3.0	6.0	13.0	25-75
	16.0	19.0	3.0	4.0	6.0	15.0	25-75
	20.0	24.0	3.0	4.0	6.0	17.0	25-100
	25.0	30.0	3.0	5.0	6.0	19.5	40-125
	30.0	36.0	6.0	5.0	9.0	22.5	40-125
	35.0	41.0	6.0	6.0	9.0	24.5	50-150
	40.0	48.0	6.0	6.0	9.0	27.0	50-150

\*G = LENGTH IN 5mm INCREMENTS, OTHER LENGTHS AVAILABLE UPON REQUEST

H = 1/2 G UNLESS OTHERWISE SPECIFIED

H1 = LOCATION OF ADDITIONAL CROSSHOLE IF REQUIRED

### LUBE OPTION:

ADD "PT", "PT2" OR "RPT" AFTER PIN TYPE

### \*RETAINER OPTION:

RETAINER #EM-1R SUPPLIED ON 6-25 DIA PINS AND #EM-2R SUPPLIED ON 30-100 DIA PINS UNLESS OTHERWISE SPECIFIED. DO NOT SPECIFY WHEN STANDARD RETAINER IS REQUIRED. SEE PAGE E-55 FOR ADDITIONAL RETAINER OPTIONS.

### ORDERING INFORMATION:

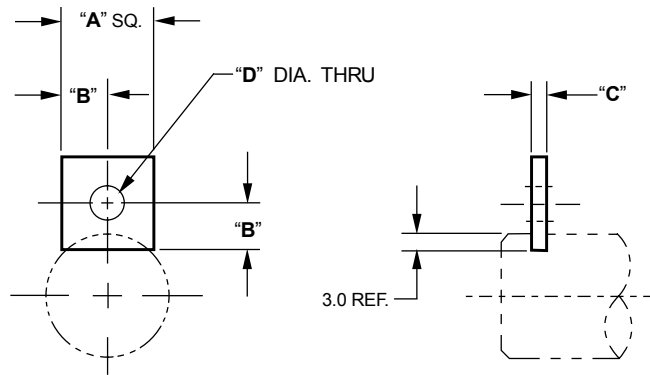
Specify: Pin Dia. — Length — Type — Lube Option — "H" Dim — "H1" Dim — \*RETAINER OPTION

Example: 20-80-MSR-PT-EM-1RD

Type	Description
MSR	HARDENED AND GROUND, SMOOTH, RETAINER
MSRS	STAINLESS, SMOOTH, RETAINER
MSRU	MILD STEEL, SMOOTH, RETAINER
MSRP	PREHARDENED, SMOOTH, RETAINER

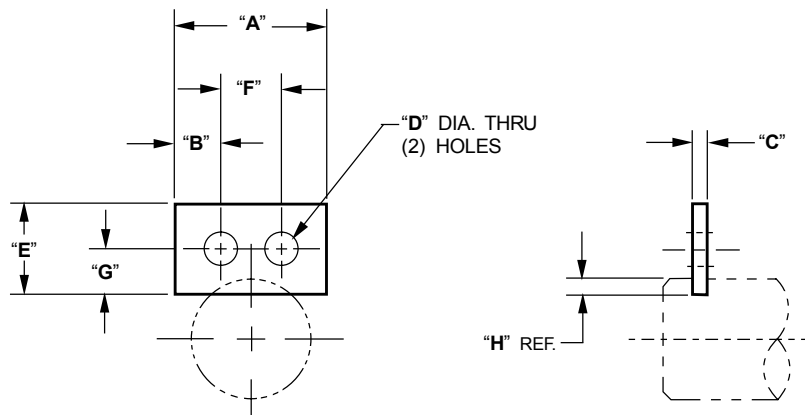
CAD Directory  
Mach-Tool\Met-FixtPin

**"Stretch"**  
The shortest standard component is given. You may "Stretch" the unit to the desired length.



Click to download CAD File (STP Format) 2dwg & 3dwg visit [eandesp.com](http://eandesp.com)

CAD FILE NAME	RETAINER NUMBER	"A" DIM	"B" DIM	"C" DIM	"D" DIM
EM-RET	EM-1R	20.0	10.0	3	7.0
	EM-2R	20.0	10.0	6	7.0
	EM-3R	25.0	12.5	3	7.0
	EM-4R	25.0	12.5	6	11.0
	EM-5R	30.0	15.0	6	11.0



CAD FILE NAME	RETAINER NUMBER	"A" DIM	"B" DIM	"C" DIM	"D" DIM	"E" DIM	"F" DIM	"G" DIM	"H" DIM
EM-RET	EM-1RD	30.0	7.5	3	7.0	20.0	15.0	10.0	3.0
	EM-2RD	30.0	7.5	6	7.0	20.0	15.0	10.0	3.0
	EM-3RD	40.0	12.5	3	7.0	25.0	15.0	12.5	3.0
	EM-4RD	45.0	12.5	6	11.0	25.0	20.0	12.5	3.0
	EM-5RD	50.0	15.0	6	11.0	30.0	20.0	15.0	3.0
	EM-6RD	65.0	20.0	6	13.0	40.0	25.0	20.0	3.0
	EM-7RD	30.0	7.5	3	9.0	20.0	15.0	10.0	3.0
	EM-8RD	50.0	10.0	6	9.0	30.0	30.0	15.0	6.0
	EM-9RD	65.0	12.5	6	11.0	40.0	40.0	20.0	10.0