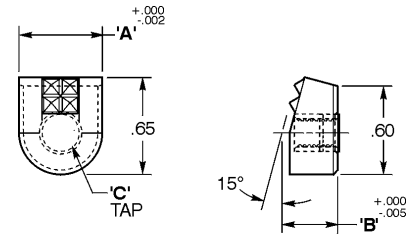


Metric Grippers "EMFSC" Solid Carbide

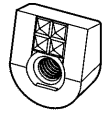


Click to download CAD File (STP Format) 2dwg & 3dwg visit eandesp.com

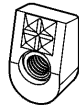
EMFSC-ANGLE GRIP					
CAD FILE NAME	PART NUMBER	A	B	C	TOOTH PATTERN
EMFSC1274	EMFSC-127-4	14.3	9.5	M5 x 0.8	4-POINT
EMFSC127410MM	EMFSC-127-4-10MM	10	9.5	M5 x 0.8	4-POINT
EMFSC12710	EMFSC-127-10	14.3	9.5	M5 x 0.8	FINE
EMFSC1304	EMFSC-130-4	14.3	9.5	M5 x 0.8	STRAIGHT
EMFSC130210MM	EMFSC-130-2-10MM	10	9.5	M5 x 0.8	STRAIGHT
EMFSC1455	EMFSC-145-5	14.3	9.5	M5 x 0.8	ANGULAR



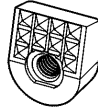
EMFSC-127-4 SHOWN



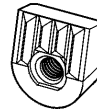
4 POINT



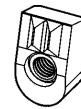
4 POINT
10 MM



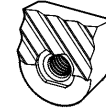
10 POINT



4 POINT
STRAIGHT



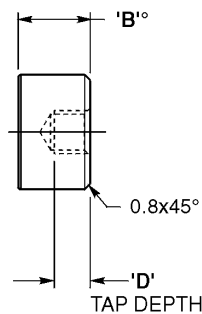
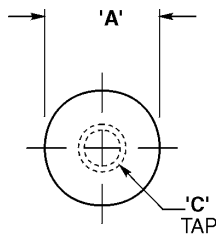
2 POINT
10 MM
STRAIGHT



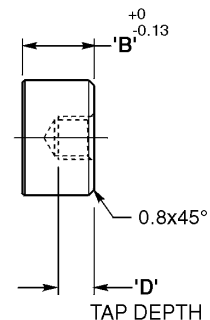
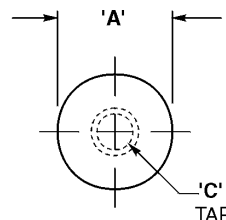
5 POINT
ANGULAR

Metric Rest Pads

"EMSRP" & "EMDRP" - STEEL/DELTRIN - TAPPED						
CAD FILE NAME (see note)	STEEL PART NUMBER	DELTRIN PART NUMBER	A DIA	B	C TAP	D TAP DEPTH
EMSRP100	EMSRP-100	EMDRP-100	10	10	M5 x 0.8	5.0
	EMSRP-102	EMDRP-102	10	12	M5 x 0.8	6.4
EMSRP120	EMSRP-120	EMDRP-120	12	10	M5 x 0.8	5.0
	EMSRP-122	EMDRP-122	12	12	M5 x 0.8	6.4
EMSRP160	EMSRP-160	EMDRP-160	16	10	M6 x 1.0	5.0
	EMSRP-162	EMDRP-162	16	12	M6 x 1.0	6.4
EMSRP200	EMSRP-200	EMDRP-200	20	10	M6 x 1.0	5.0
	EMSRP-202	EMDRP-202	20	12	M6 x 1.0	6.4
EMSRP250	EMSRP-250	EMDRP-250	25	10	M6 x 1.0	5.0
	EMSRP-252	EMDRP-252	25	12	M6 x 1.0	6.4



STEEL



DELTRIN

CAD Directory

Mach-Tool\Met-Gripper

Note: The shortest standard component is given, you may "stretch" the unit to the desired length.

All dimensions are in mm