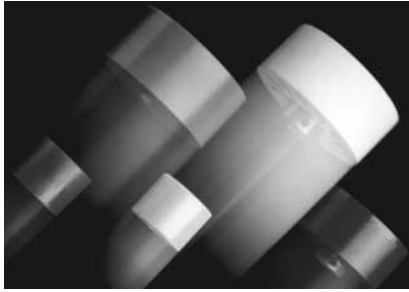


Rollers



There are literally thousands of useful applications for E & E Rollers. They are used on: conveyors, belt idlers, shock cushioners, stamping die part guides and supports, carts, wagons; they are designed into machines and assembly operations anywhere you need part movement and protection.

Our rollers are molded from solid or sponge black neoprene, white nitrile, urethane, or DuraSoft material. You can order them in solid, self-cleaning finned, or our original "DuraSoft®". All styles are offered in various sizes and durometers. A standard selection of four different mountings are available to meet almost any application requirement.

Whether your product is delicate & fragile or heavy & cumbersome, E & E's engineering and sales staff can help you determine the best roller and/or bumper for your particular application.

All items are available for immediate shipment from stock. Specials are quoted on request.

NEW URETHANE ROLLERS

Urethane rollers are more rugged and wear resistant than conventional rollers. They are heavy duty and resistant to harsh industrial environments. They are used in stamping plants, cardboard, paper, and sheet metal product manufacturing areas. Their long lasting capacity also makes them popular in postal handling and

other metal product assembly operations. The higher tensile strength of urethane makes them cut resistant. They can also be used as leading rollers on assembly and conveyor lines. Urethane rollers are available from stock in all the same mountings, durometers and sizes as neoprene.



MINI ROLLERS

They are only 1-1/2" in diameter and are useful in a wide range of applications, especially where extra space or clearance is needed.



NEW WHITE ROLLERS

Non-Marring White Rollers are available in all standard sizes, durometers and mountings. They are ideal for applications where part protection and appearance is a concern.

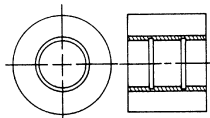


DURASOFT®

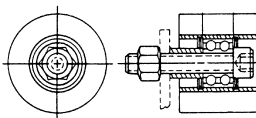
They are molded from a special elastomer with low durometer characteristics and high physical properties. DuraSoft Rollers are ideal for applications which require a gentle but firm touch.

All Rollers Are Available in Your Choice of Standard Mountings.

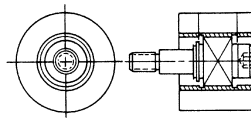
1. Roll Only (roll bonded to metal insert).
2. Complete (stud mounted free wheeling bearing)
3. "EBR" Brake Roll (one directional - clutch bearing)
4. "EX10" or "EX12" Shaft Drive (With 1" dia. or 1-1/4" dia. hub. Check catalog specifications)



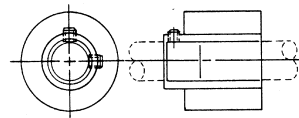
HARDWARE INCLUDED: Internal Metal Insert



Bearing Spacer, SHCS and Lock Nut



One Directional Pack and Stripper Bolt



"EX10" shown

Hub Drive and 2 Set Screw

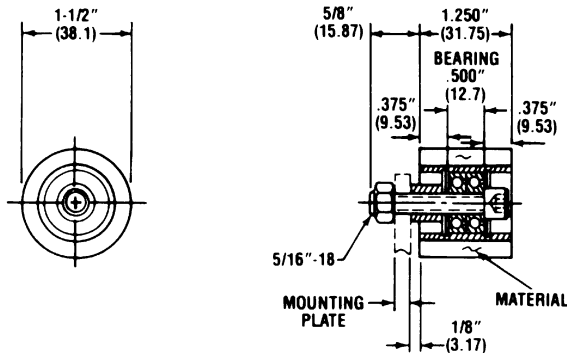
BASE ELASTOMER	CHEMICAL NAME	ADVANTAGES	DISADVANTAGES	MAXIMUM SERVICE TEMPERATURE DEGREES F.	MINIMUM SERVICE TEMPERATURE DEGREES F.
NEOPRENE	CHLOROPRENE	Flame resistant. Weather resistant. Resists: gasoline, oil, ozone, high temp.	Affected by phosphate hydraulic fluids, aromatic hydrocarbons.	Continuous 200° Intermittent 250°	— 40°
URETHANE	DI-ISOCYANTE POLYURETHANE	Highest available abrasion resistance, strength & load bearing. High elongation, hardness. Resistance to ozone, oxygen.	Affected by ether, esters, acid, aromatics, alkalis. Performance is good, only with hardness.	Continuous 200° Intermittent 250°	— 65°
BUNA N (White Rollers)	NITRILE BUTADIENE	Resistant to gasoline, oil, alcohol, abrasion. Good physical properties.	Affected by degreaser solvents. Good physicals need reinforcement.	Continuous 175° Intermittent 225°	— 60°
DURASOFT®	POLY (1, 3, CYCLOPENTYLENE VINYLENE)	Excellent resilience, and tear resistance, good abrasion weather, H ₂ O and Ethylene Glycol resistance.	Affected by solvents, extreme high temperatures and gasoline.	Continuous 200° Intermittent 250°	— 60°

Rollers – Mini 1-1/2" Dia.



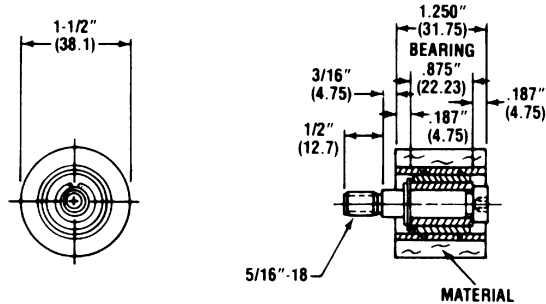
Mini rollers are only 1-1/2" in diameter. They're great wherever you need extra space or clearance. Mini rollers have unlimited design uses. They are available in a variety of mountings, styles and durometers.

E&E SPECIAL PRODUCTS
 7200 MILLER DRIVE
 WARREN, MI 48092
E&ESP 586-978-3377 / 586-978-3378 FAX

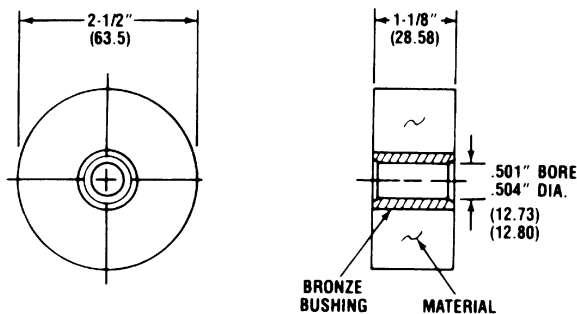


ROLL COMPLETE					
CAD FILE NAME	PART NUMBER	DUROMETER	MATERIAL AVAILABLE		
			(STD)	(W)	(UR)
ERR215C	ERR-215-20 ()-C*	20	X	X	
	ERR-215-35 ()-C*	35	X	X	X
	ERR-215-60 ()-C*	60	X	X	X
	ERR-215-80 ()-C*	80	X	X	X
	ERR-215-95UR-C*	95			X

* Add "P" for precision bearing or add "PC" for sealed precision bearing option.



BRAKE ROLL RIGHT/LEFT					
CAD FILE NAME	PART NUMBER	DUROMETER	MATERIAL AVAILABLE		
			(STD)	(W)	(UR)
EBR215	EBR-215-20 ()-R/L	20	X	X	
	EBR-215-35 ()-R/L	35	X	X	X
	EBR-215-60 ()-R/L	60	X	X	X
	EBR-215-80 ()-R/L	80	X	X	X
	EBR-215-95UR-R/L	95			X



1/2" SHAFT MOUNT					
CAD FILE NAME	PART NUMBER	DUROMETER	MATERIAL AVAILABLE		
			(STD)	(W)	(UR)
ERR125	ERR-125-60 ()	60	X	X	
	ERR-125-80 ()	80			X

Note: () Is the material to be specified to complete part number. When ordering, indicate your material selection into the part number after the durometer. Indicate nothing for black (STD), "W" for white or "UR" for urethane.

Material Handling

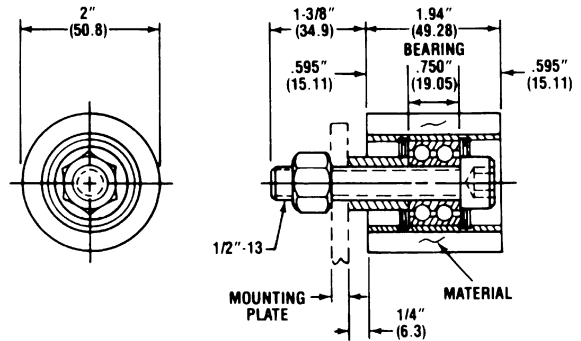
Rollers – Solid 2" Dia.

Solid rollers have a flat surface and come in sizes from 1-1/2" to 4" in diameter.

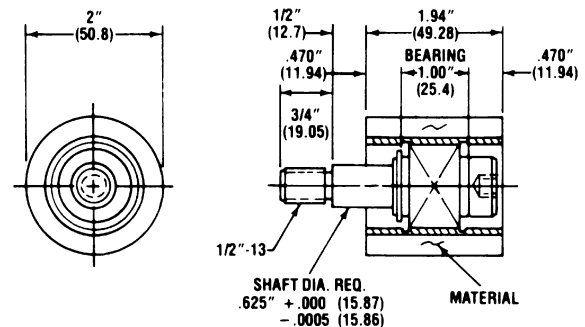


ROLL COMPLETE					
CAD FILE NAME	PART NO.	DUROMETER	MATERIAL AVAILABLE		
			(STD)	(W)	(UR)
ERR202RC	ERR-2020-20 ()-C*	20	X	X	
	ERR-2020-35 ()-C*	35	X	X	X
	ERR-2020-60 ()-C*	60	X	X	X
	ERR-2020-80 ()-C*	80	X	X	X
	ERR-2020-95UR-C*	95			X

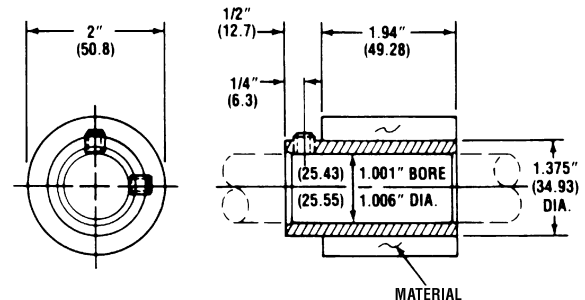
* Add "P" for precision bearing or add "PC" for sealed precision bearing option.



BRAKE ROLL RIGHT/LEFT					
CAD FILE NAME	PART NO.	DUROMETER	MATERIAL AVAILABLE		
			(STD)	(W)	(UR)
EBR202	EBR-2020-20 ()-R/L	20	X	X	
	EBR-2020-35 ()-R/L	35	X	X	X
	EBR-2020-60 ()-R/L	60	X	X	X
	EBR-2020-80 ()-R/L	80	X	X	X
	EBR-2020-95UR-R/L	95			X

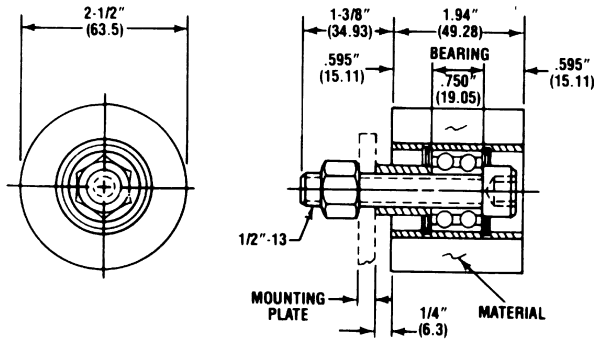


EX10 (FOR 1" SHAFT DRIVE)					
CAD FILE NAME	PART NO.	DUROMETER	MATERIAL AVAILABLE		
			(STD)	(W)	(UR)
ERR202E1	ERR-2020-20 ()-EX10	20	X	X	
	ERR-2020-35 ()-EX10	35	X	X	X
	ERR-2020-60 ()-EX10	60	X	X	X
	ERR-2020-80 ()-EX10	80	X	X	X
	ERR-2020-95UR-EX10	95			X



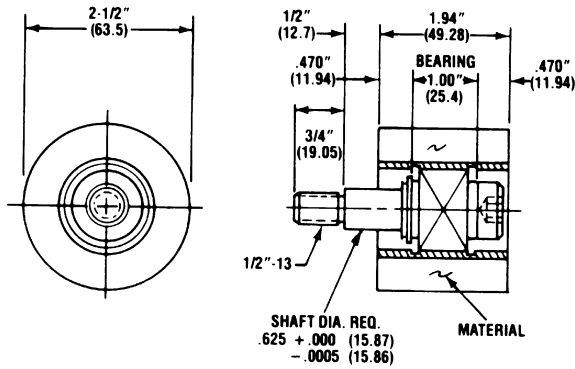
Note: () Is the material to be specified to complete part number. When ordering, indicate your material selection into the part number after the durometer. Indicate nothing for black (STD), "W" for white or "UR" for urethane.

Rollers – Solid 2-1/2" Dia.

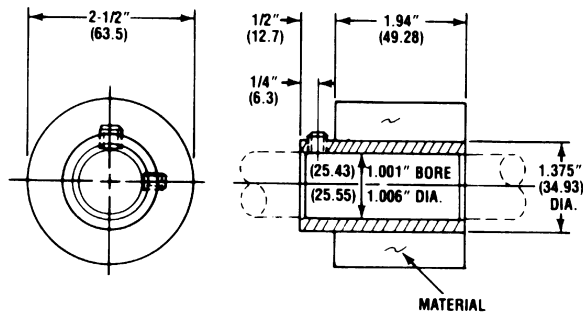


ROLL COMPLETE					
CAD FILE NAME	PART NUMBER	DUROMETER	MATERIAL AVAILABLE		
			(STD)	(W)	(UR)
ERR502C	ERR-502-20 ()-C*	20	X	X	
	ERR-502-35 ()-C*	35	X	X	X
	ERR-502-60 ()-C*	60	X	X	X
	ERR-502-80 ()-C*	80	X	X	X
	ERR-502-95UR-C*	95			X
	ERR-325 ()-C*	20	SPONGE NEOPRENE		

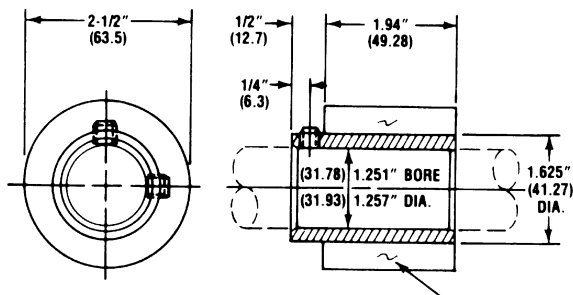
* Add "P" for precision bearing or add "PC" for sealed precision bearing option.



BRAKE ROLL RIGHT/LEFT					
CAD FILE NAME	PART NUMBER	DUROMETER	MATERIAL AVAILABLE		
			(STD)	(W)	(UR)
EBR502	EBR-502-20 ()-R/L	20	X	X	
	EBR-502-35 ()-R/L	35	X	X	X
	EBR-502-60 ()-R/L	60	X	X	X
	EBR-502-80 ()-R/L	80	X	X	X
	EBR-502-95UR-R/L	95			X
	EBR-325 ()-R/L	20	SPONGE NEOPRENE		



EX10 (FOR 1" SHAFT DRIVE)					
CAD FILE NAME	PART NUMBER	DUROMETER	MATERIAL AVAILABLE		
			(STD)	(W)	(UR)
ERR502E1	ERR-502-20 ()-EX10	20	X	X	
	ERR-502-35 ()-EX10	35	X	X	X
	ERR-502-60 ()-EX10	60	X	X	X
	ERR-502-80 ()-EX10	80	X	X	X
	ERR-502-95UR-EX10	95			X
	ERR-325-EX10	20	SPONGE NEOPRENE		

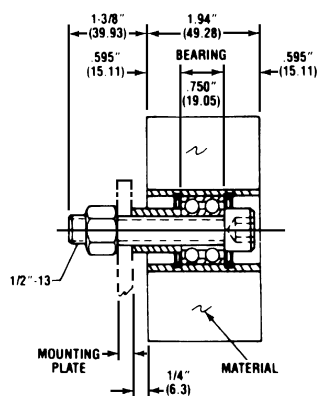
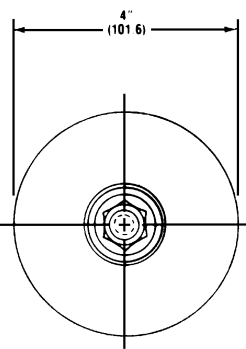


EX12 (FOR 1-1/4" SHAFT DRIVE)					
CAD FILE NAME	PART NUMBER	DUROMETER	MATERIAL AVAILABLE		
			(STD)	(W)	(UR)
ERR502E2	ERR-502-20 ()-EX12	20			
	ERR-502-35 ()-EX12	35			
	ERR-502-60 ()-EX12	60	X		X
	ERR-502-95UR-EX12	95			X
	ERR-502-80 ()-EX12	80			X

Note: () Is the material to be specified to complete part number. When ordering, indicate your material selection into the part number after the durometer. Indicate nothing for black (STD), "W" for white or "UR" for urethane.

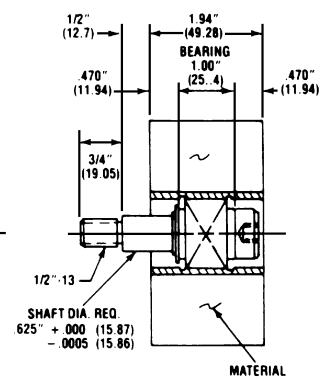
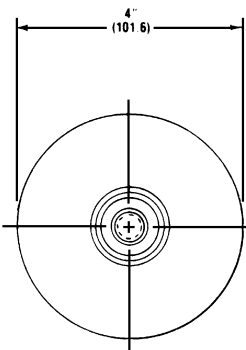
Rollers – Solid 4" Dia.

ROLL COMPLETE					
CAD FILE NAME	PART NUMBER	DUROMETER	MATERIAL AVAILABLE		
			(STD)	(W)	(UR)
ERR754C	ERR-754-20 ()-C*	20	X	X	
	ERR-754-35 ()-C*	35	X	X	X
	ERR-754-60 ()-C*	60	X	X	X
	ERR-754-80 ()-C*	80	X	X	X
	ERR-754-95UR-C*	95			X
	ERR-445 ()-C*	20	SPONGE NEOPRENE		

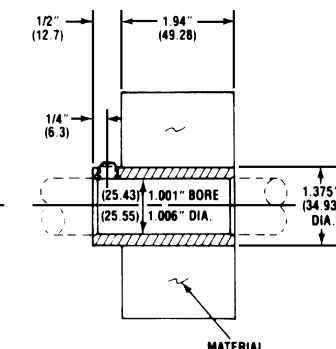
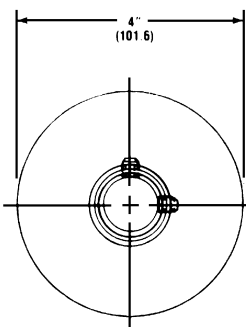


* Add "P" for precision bearing or add "PC" for sealed precision bearing option.

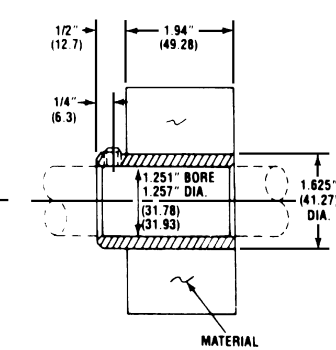
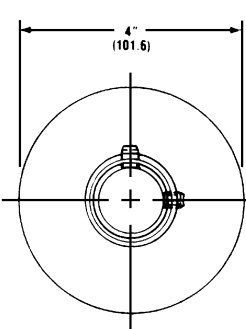
BRAKE ROLL RIGHT/LEFT					
CAD FILE NAME	PART NUMBER	DUROMETER	MATERIAL AVAILABLE		
			(STD)	(W)	(UR)
EBR754	EBR-754-20 ()-R/L	20	X	X	
	EBR-754-35 ()-R/L	35	X	X	X
	EBR-754-60 ()-R/L	60	X	X	X
	EBR-754-80 ()-R/L	80	X	X	X
	EBR-754-95UR-R/L	95			X
	EBR-445 ()-R/L	20	SPONGE NEOPRENE		



EX10 (FOR 1" SHAFT DRIVE)					
CAD FILE NAME	PART NUMBER	DUROMETER	MATERIAL AVAILABLE		
			(STD)	(W)	(UR)
ERR754E1	ERR-754-20 ()-EX10	20	X	X	
	ERR-754-35 ()-EX10	35	X	X	X
	ERR-754-60 ()-EX10	60	X	X	X
	ERR-754-80 ()-EX10	80	X	X	X
	ERR-754-95UR-EX10	95			X
	ERR-445 ()-EX10	20	SPONGE NEOPRENE		



EX12 (FOR 1-1/4" SHAFT DRIVE)					
CAD FILE NAME	PART NUMBER	DUROMETER	MATERIAL AVAILABLE		
			(STD)	(W)	(UR)
ERR754E2	ERR-754-20 ()-EX12	20			
	ERR-754-35 ()-EX12	35	X		
	ERR-754-60 ()-EX12	60	X	X	X
	ERR-754-80 ()-EX12	80			X
	ERR-754-95UR-EX12	95			X



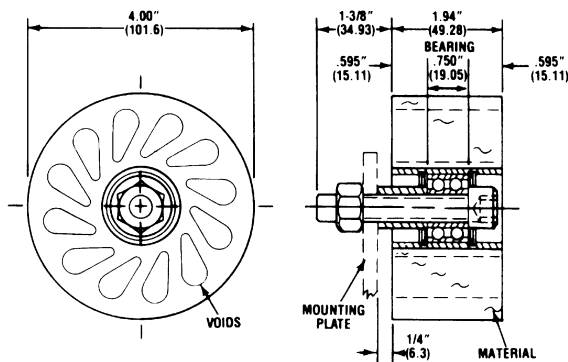
Note: () Is the material to be specified to complete part number. When ordering, indicate your material selection into the part number after the durometer. Indicate nothing for black (STD), "W" for white or "UR" for urethane.

Rollers – Durasoft 4" Dia.



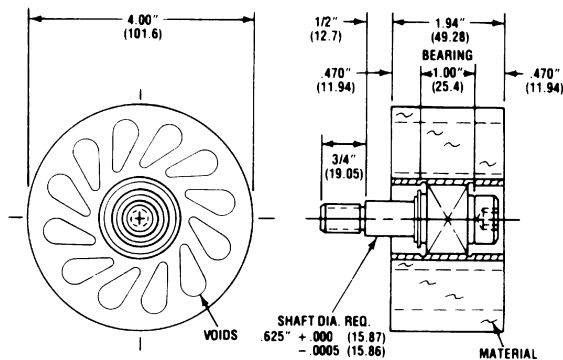
Hardworking Rollers with the Soft Touch

DuraSoft® rollers are compliant to the workpiece, yet durable enough to stand up to demanding production applications. They are molded from a special elastomer with low durometer characteristics and high physical properties. The unique shape of the holes also add to their soft but resilient nature. DuraSoft rollers are ideal for production and assembly applications which require a gentle but firm touch. Material handling uses include: bottling machinery, sheet metal product handling, car wash equipment, and robotic end effectors.

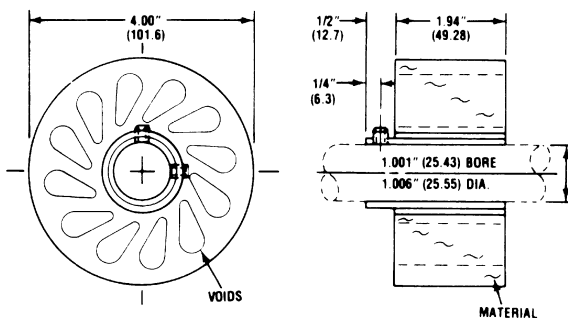


ROLL COMPLETE					
CAD FILE NAME	PART NUMBER	DUROMETER	MATERIAL AVAILABLE		
			(STD)	(W)	(UR)
ERR754C	EDR-754-20 ()-C *	20	X	X	
	EDR-754-35 ()-C *	35	X	X	X
	EDR-754-60 ()-C *	60			X
	EDR-754-80 ()-C *	80			X

* Add "P" for precision bearing or add "PC" for sealed precision bearing option.



BRAKE ROLL RIGHT/LEFT					
CAD FILE NAME	PART NUMBER	DUROMETER	MATERIAL AVAILABLE		
			(STD)	(W)	(UR)
EBR754	EDR-754-20 ()-BR-R/L	20	X	X	
	EDR-754-35 ()-BR-R/L	35	X	X	X
	EDR-754-60 ()-BR-R/L	60			X
	EDR-754-80 ()-BR-R/L	80			X



EX10 (FOR 1" SHAFT DRIVE)					
CAD FILE NAME	PART NUMBER	DUROMETER	MATERIAL AVAILABLE		
			(STD)	(W)	(UR)
ERR754E1	EDR-754-20 ()-EX10	20	X	X	
	EDR-754-35 ()-EX10	35	X	X	X
	EDR-754-60 ()-EX10	60			X
	EDR-754-80 ()-EX10	80			X

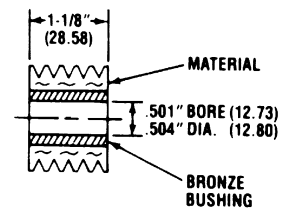
Note: () Is the material to be specified to complete part number. When ordering, indicate your material selection into the part number after the durometer. Indicate nothing for black (STD), "W" for white or "UR" for urethane.

Rollers – Finned 1-1/2" – 2-1/2" Dia.

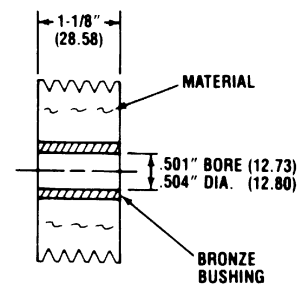
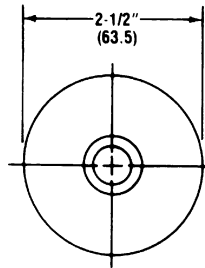
The unique finned design provides longer wear, a soft touch for optimum parts protection, and self cleaning characteristics, especially in harsh industrial environments.



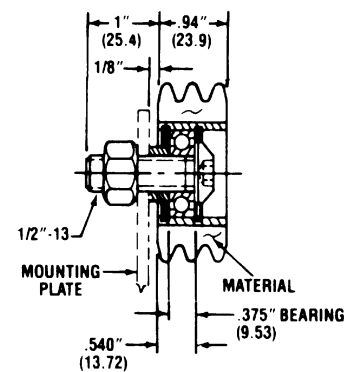
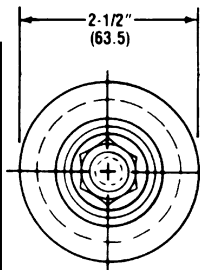
FINNED					
CAD FILE NAME	PART NUMBER	DUROMETER	MATERIAL AVAILABLE		
			(STD)	(W)	(UR)
ERR1252F	ERR-125-2F-60 ()	60	X	X	



FINNED					
CAD FILE NAME	PART NUMBER	DUROMETER	MATERIAL AVAILABLE		
			(STD)	(W)	(UR)
ERR125F	ERR-125-F-60 ()	60	X	X	

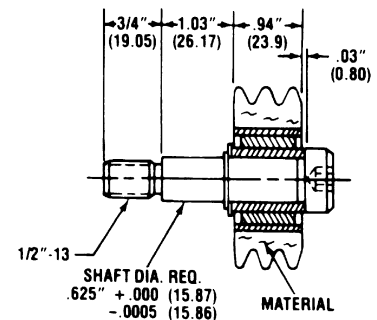
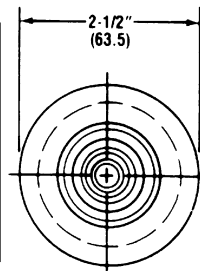


ROLL COMPLETE					
CAD FILE NAME	PART NUMBER	DUROMETER	MATERIAL AVAILABLE		
			(STD)	(W)	(UR)
ERR2596C	ERR-9250-20 ()-C*	20	X	X	
	ERR-9250-35 ()-C*	35	X	X	X
	ERR-9250-60 ()-C*	60	X		



* Add "P" for precision bearing or add "PC" for sealed precision bearing option.

BRAKE ROLL RIGHT/LEFT					
CAD FILE NAME	PART NUMBER	DUROMETER	MATERIAL AVAILABLE		
			(STD)	(W)	(UR)
EBR2596	EBR-9250-20 ()-R/L	20	X	X	
	EBR-9250-35 ()-R/L	35	X	X	X
	EBR-9250-60 ()-R/L	60	X		

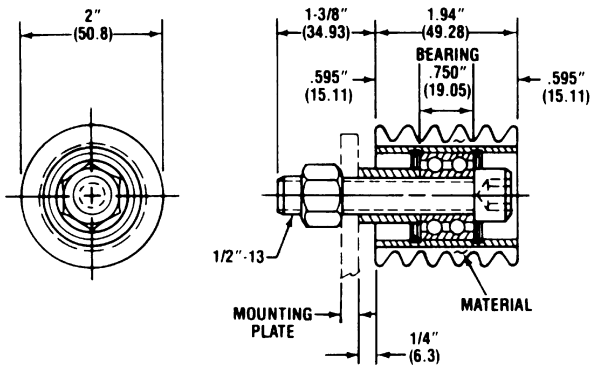


Note: () is the material to be specified to complete part number. When ordering, indicate your material selection into the part number after the durometer. Indicate nothing for black (STD), "W" for white or "UR" for urethane.

Rollers – Finned 2" Dia.

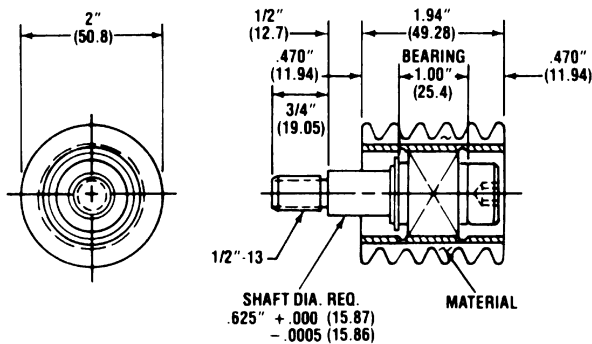



E&E SPECIAL PRODUCTS
 7200 MILLER DRIVE
 WARREN, MI 48092
 586-978-3377 / 586-978-3378 FAX

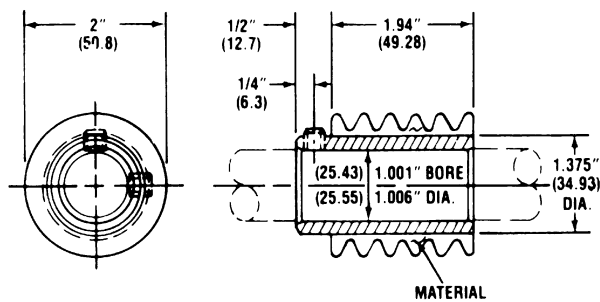


COMPLETE					
CAD FILE NAME	PART NUMBER	DUROMETER	MATERIAL AVAILABLE		
			(STD)	(W)	(UR)
ERR2502C	ERR-250-2-20 ()-C*	20	X	X	
	ERR-250-2-35 ()-C*	35	X	X	X

* Add "P" for precision bearing or add "PC" for sealed precision bearing option.



BRAKE ROLL RIGHT/LEFT					
CAD FILE NAME	PART NUMBER	DUROMETER	MATERIAL AVAILABLE		
			(STD)	(W)	(UR)
EBR2502	EBR-250-2-20 ()-R/L	20	X	X	
	EBR-250-2-35 ()-R/L	35	X	X	X



EX10 (FOR 1" SHAFT DRIVE)					
CAD FILE NAME	PART NUMBER	DUROMETER	MATERIAL AVAILABLE		
			(STD)	(W)	(UR)
ERR2502E	ERR-250-2-20 ()-EX10	20	X	X	
	ERR-250-2-35 ()-EX10	35	X	X	X

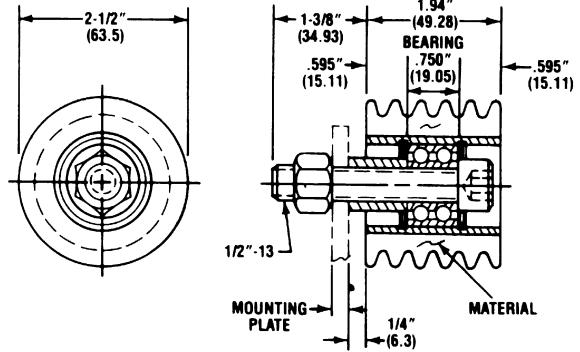
Note: () Is the material to be specified to complete part number. When ordering, indicate your material selection into the part number after the durometer. Indicate nothing for black (STD), "W" for white or "UR" for urethane.

Material Handling

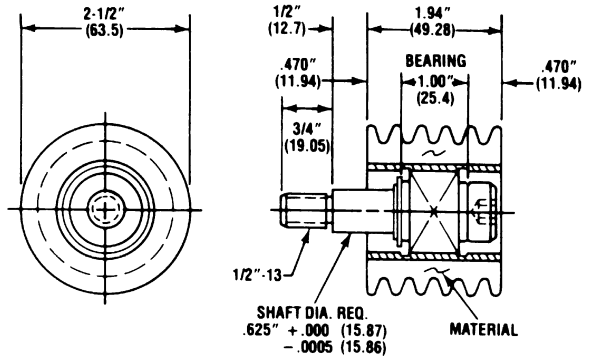
Rollers – Finned 2-1/2" Dia.

ROLL COMPLETE					
CAD FILE NAME	PART NUMBER	DUROMETER	MATERIAL AVAILABLE		
			(STD)	(W)	(UR)
ERR250C	ERR-250-20 ()-C*	20	X	X	
	ERR-250-35 ()-C*	35	X	X	X
	ERR-250-60 ()-C*	60	X		

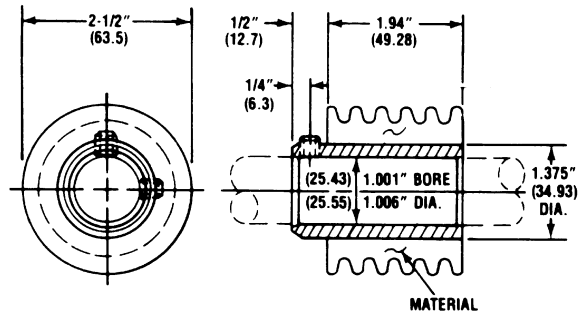
* Add "P" for precision bearing or add "PC" for sealed precision bearing option.



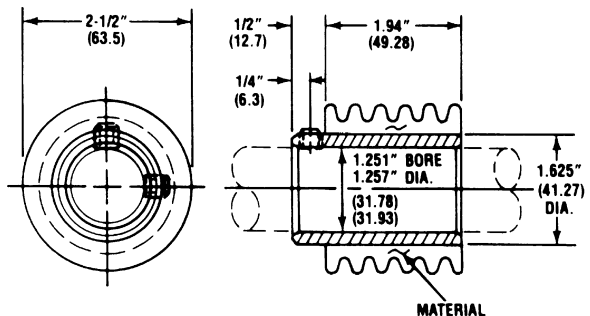
BRAKE ROLL RIGHT/LEFT					
CAD FILE NAME	PART NUMBER	DUROMETER	MATERIAL AVAILABLE		
			(STD)	(W)	(UR)
EBR250	EBR-250-20 ()-R/L	20	X	X	
	EBR-250-35 ()-R/L	35	X	X	X
	EBR-250-60 ()-R/L	60	X		



EX10 (FOR 1" SHAFT DRIVE)					
CAD FILE NAME	PART NUMBER	DUROMETER	MATERIAL AVAILABLE		
			(STD)	(W)	(UR)
ERR250E1	ERR-250-20 ()-EX10	20	X	X	
	ERR-250-35 ()-EX10	35	X	X	X
	ERR-250-60 ()-EX10	60	X		

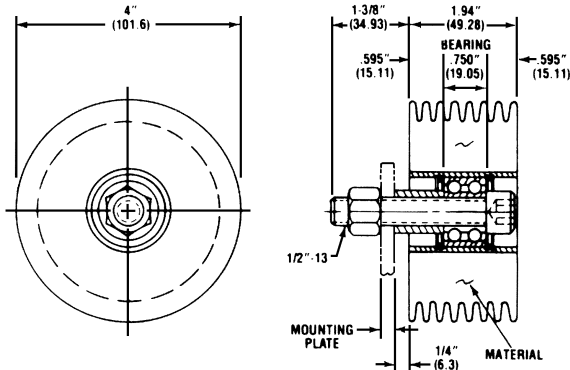


EX12 (FOR 1-1/4" SHAFT DRIVE)					
CAD FILE NAME	PART NUMBER	DUROMETER	MATERIAL AVAILABLE		
			(STD)	(W)	(UR)
ERR250E2	ERR-250-35 ()-EX12	35	X		



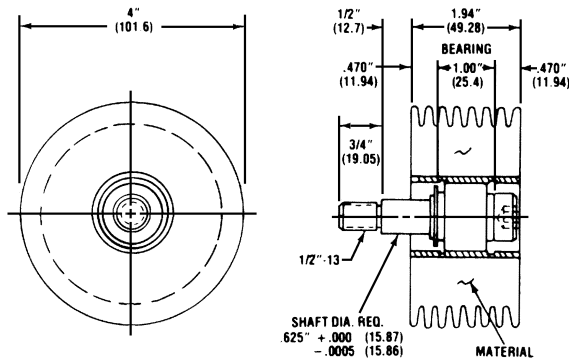
Note: () Is the material to be specified to complete part number. When ordering, indicate your material selection into the part number after the durometer. Indicate nothing for black (STD), "W" for white or "UR" for urethane.

Rollers – Finned 4" Dia.

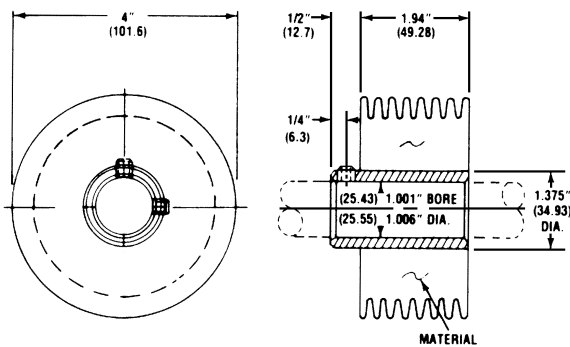


ROLL COMPLETE					
CAD FILE NAME	PART NUMBER	DUROMETER	MATERIAL AVAILABLE		
			(STD)	(W)	(UR)
ERR667C	ERR-667-35 ()-C*	35	X	X	X
	ERR-667-60 ()-C*	60	X	X	X

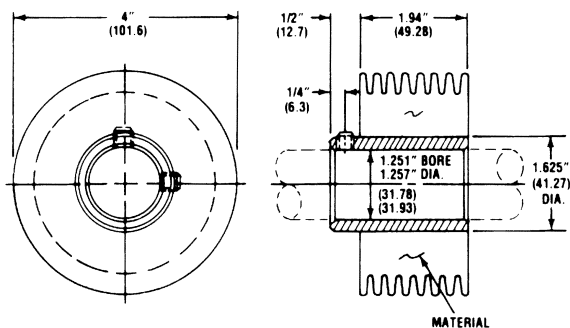
* Add "P" for precision bearing or add "PC" for sealed precision bearing option.



BRAKE ROLL RIGHT/LEFT					
CAD FILE NAME	PART NUMBER	DUROMETER	MATERIAL AVAILABLE		
			(STD)	(W)	(UR)
EBR667	EBR-667-35 ()-RT/L	35	X	X	X
	EBR-667-60 ()-RT/L	60	X	X	X



EX10 (FOR 1" SHAFT DRIVE)					
CAD FILE NAME	PART NUMBER	DUROMETER	MATERIAL AVAILABLE		
			(STD)	(W)	(UR)
ERR667E1	ERR-667-35 ()-EX10	35	X	X	X
	ERR-667-60 ()-EX10	60	X	X	X



EX12 (FOR 1-1/4" SHAFT DRIVE)					
CAD FILE NAME	PART NUMBER	DUROMETER	MATERIAL AVAILABLE		
			(STD)	(W)	(UR)
ERR667E2	ERR-667-35 ()-EX12	35	X		X
	ERR-667-60 ()-EX12	60			X

Note: () Is the material to be specified to complete part number. When ordering, indicate your material selection into the part number after the durometer. Indicate nothing for black (STD), "W" for white or "UR" for urethane.

Material Handling