

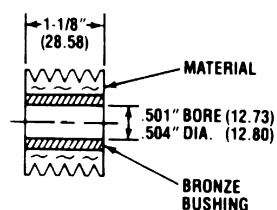
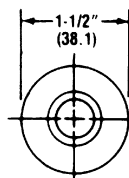


# Rollers – Finned 1-1/2" – 2-1/2" Dia.

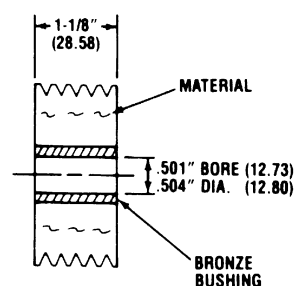
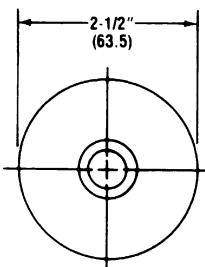
The unique finned design provides longer wear, a soft touch for optimum parts protection, and self cleaning characteristics, especially in harsh industrial environments.



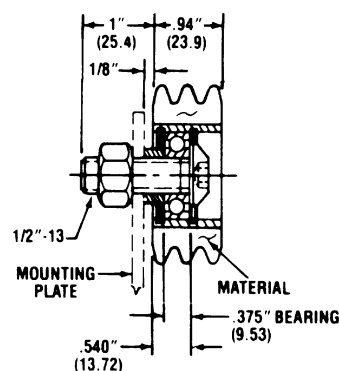
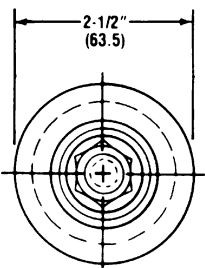
FINNED					
CAD FILE NAME	PART NUMBER	DUROMETER	MATERIAL AVAILABLE		
			(STD)	(W)	(UR)
ERR1252F	ERR-125-2F-60 ( )	60	X	X	



FINNED					
CAD FILE NAME	PART NUMBER	DUROMETER	MATERIAL AVAILABLE		
			(STD)	(W)	(UR)
ERR125F	ERR-125-F-60 ( )	60	X	X	

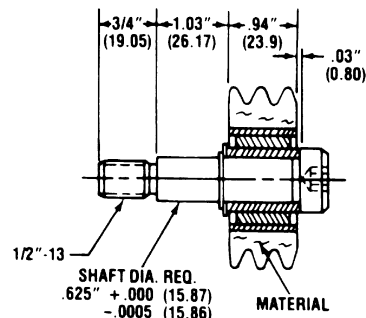
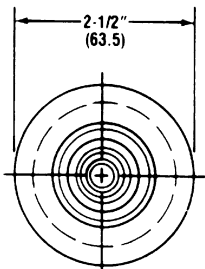


ROLL COMPLETE					
CAD FILE NAME	PART NUMBER	DUROMETER	MATERIAL AVAILABLE		
			(STD)	(W)	(UR)
ERR2596C	ERR-9250-20 ( )-C*	20	X	X	
	ERR-9250-35 ( )-C*	35	X	X	X
	ERR-9250-60 ( )-C*	60	X		



\* Add "P" for precision bearing or add "PC" for sealed precision bearing option.

BRAKE ROLL RIGHT/LEFT					
CAD FILE NAME	PART NUMBER	DUROMETER	MATERIAL AVAILABLE		
			(STD)	(W)	(UR)
EBR2596	EBR-9250-20 ( )-R/L	20	X	X	
	EBR-9250-35 ( )-R/L	35	X	X	X
	EBR-9250-60 ( )-R/L	60	X		

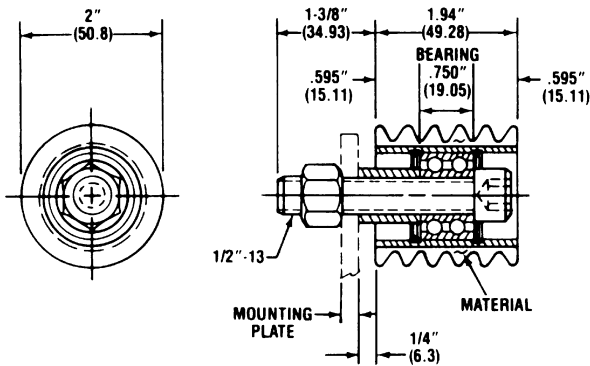


**Note:** ( ) is the material to be specified to complete part number. When ordering, indicate your material selection into the part number after the durometer. Indicate nothing for black (STD), "W" for white or "UR" for urethane.

# Rollers – Finned 2" Dia.

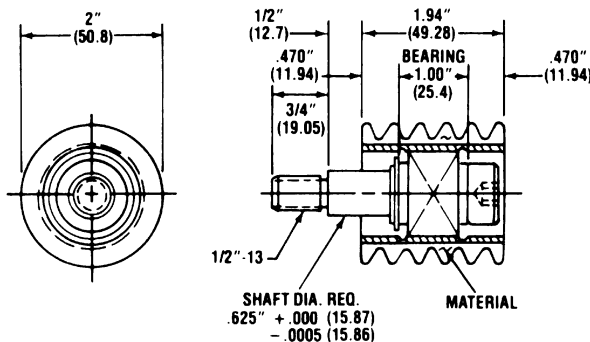


**E&E SPECIAL PRODUCTS**  
 7200 MILLER DRIVE  
 WARREN, MI 48092  
 E&ESP 586-978-3377 / 586-978-3378 FAX

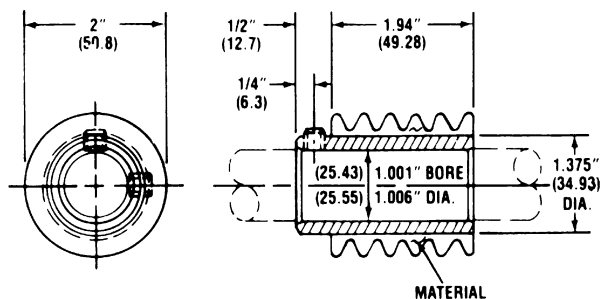


COMPLETE					
CAD FILE NAME	PART NUMBER	DUROMETER	MATERIAL AVAILABLE		
			(STD)	(W)	(UR)
ERR2502C	ERR-250-2-20 ( )-C*	20	X	X	
	ERR-250-2-35 ( )-C*	35	X	X	X

\* Add "P" for precision bearing or add "PC" for sealed precision bearing option.



BRAKE ROLL RIGHT/LEFT					
CAD FILE NAME	PART NUMBER	DUROMETER	MATERIAL AVAILABLE		
			(STD)	(W)	(UR)
EBR2502	EBR-250-2-20 ( )-R/L	20	X	X	
	EBR-250-2-35 ( )-R/L	35	X	X	X



EX10 (FOR 1" SHAFT DRIVE)					
CAD FILE NAME	PART NUMBER	DUROMETER	MATERIAL AVAILABLE		
			(STD)	(W)	(UR)
ERR2502E	ERR-250-2-20 ( )-EX10	20	X	X	
	ERR-250-2-35 ( )-EX10	35	X	X	X

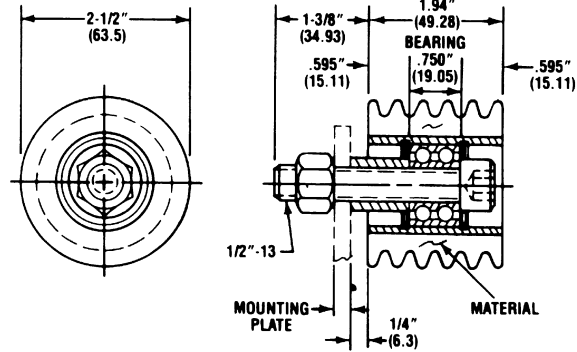
**Note:** ( ) Is the material to be specified to complete part number. When ordering, indicate your material selection into the part number after the durometer. Indicate nothing for black (STD), "W" for white or "UR" for urethane.

Material Handling

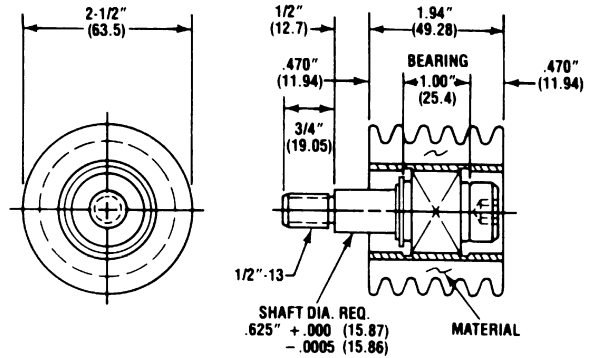
# Rollers – Finned 2-1/2" Dia.

ROLL COMPLETE					
CAD FILE NAME	PART NUMBER	DUROMETER	MATERIAL AVAILABLE		
			(STD)	(W)	(UR)
ERR250C	ERR-250-20 ( )-C*	20	X	X	
	ERR-250-35 ( )-C*	35	X	X	X
	ERR-250-60 ( )-C*	60	X		

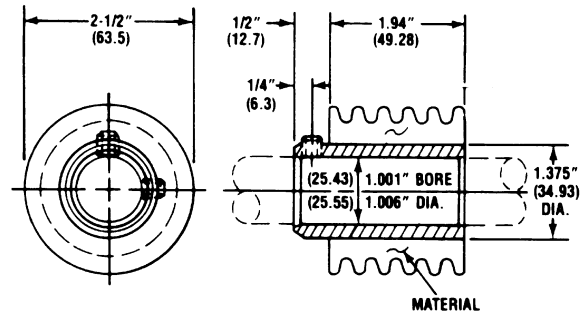
\* Add "P" for precision bearing or add "PC" for sealed precision bearing option.



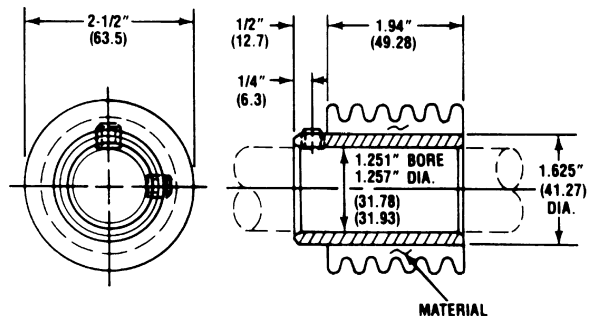
BRAKE ROLL RIGHT/LEFT					
CAD FILE NAME	PART NUMBER	DUROMETER	MATERIAL AVAILABLE		
			(STD)	(W)	(UR)
EBR250	EBR-250-20 ( )-R/L	20	X	X	
	EBR-250-35 ( )-R/L	35	X	X	X
	EBR-250-60 ( )-R/L	60	X		



EX10 (FOR 1" SHAFT DRIVE)					
CAD FILE NAME	PART NUMBER	DUROMETER	MATERIAL AVAILABLE		
			(STD)	(W)	(UR)
ERR250E1	ERR-250-20 ( )-EX10	20	X	X	
	ERR-250-35 ( )-EX10	35	X	X	X
	ERR-250-60 ( )-EX10	60	X		

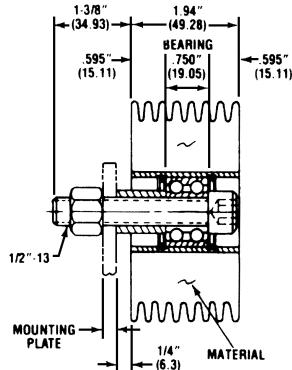
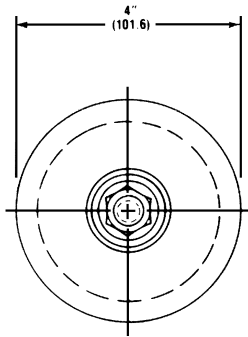


EX12 (FOR 1-1/4" SHAFT DRIVE)					
CAD FILE NAME	PART NUMBER	DUROMETER	MATERIAL AVAILABLE		
			(STD)	(W)	(UR)
ERR250E2	ERR-250-35 ( )-EX12	35	X		



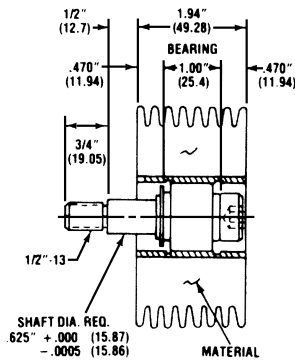
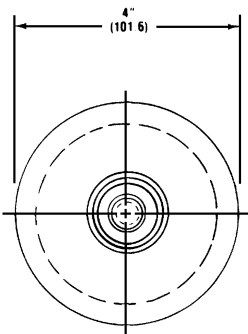
**Note:** ( ) Is the material to be specified to complete part number. When ordering, indicate your material selection into the part number after the durometer. Indicate nothing for black (STD), "W" for white or "UR" for urethane.

# Rollers – Finned 4" Dia.

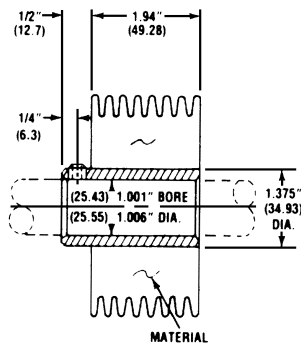
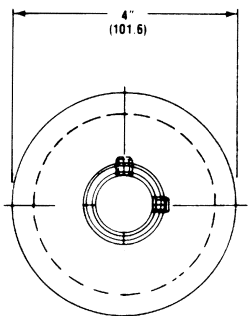


ROLL COMPLETE					
CAD FILE NAME	PART NUMBER	DUROMETER	MATERIAL AVAILABLE		
			(STD)	(W)	(UR)
ERR667C	ERR-667-35 ( )-C*	35	X	X	X
	ERR-667-60 ( )-C*	60	X	X	X

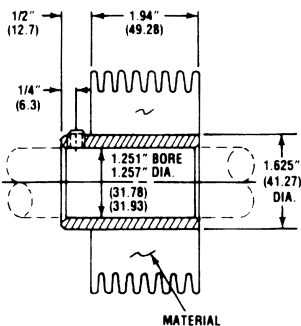
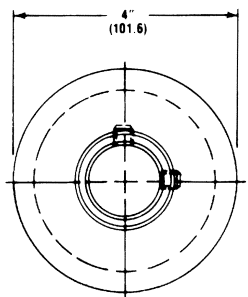
\* Add "P" for precision bearing or add "PC" for sealed precision bearing option.



BRAKE ROLL RIGHT/LEFT					
CAD FILE NAME	PART NUMBER	DUROMETER	MATERIAL AVAILABLE		
			(STD)	(W)	(UR)
EBR667	EBR-667-35 ( )-RT/L	35	X	X	X
	EBR-667-60 ( )-RT/L	60	X	X	X



EX10 (FOR 1" SHAFT DRIVE)					
CAD FILE NAME	PART NUMBER	DUROMETER	MATERIAL AVAILABLE		
			(STD)	(W)	(UR)
ERR667E1	ERR-667-35 ( )-EX10	35	X	X	X
	ERR-667-60 ( )-EX10	60	X	X	X



EX12 (FOR 1-1/4" SHAFT DRIVE)					
CAD FILE NAME	PART NUMBER	DUROMETER	MATERIAL AVAILABLE		
			(STD)	(W)	(UR)
ERR667E2	ERR-667-35 ( )-EX12	35	X		X
	ERR-667-60 ( )-EX12	60			X

**Note:** ( ) Is the material to be specified to complete part number. When ordering, indicate your material selection into the part number after the durometer. Indicate nothing for black (STD), "W" for white or "UR" for urethane.

Material Handling