

Switch Rods & Switch Dogs



E&E SPECIAL PRODUCTS
 7200 MILLER DRIVE
 WARREN, MI 48092
 586-978-3377 / 586-978-3378 FAX



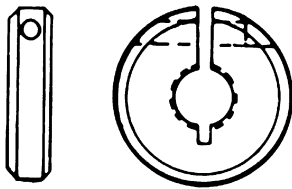
Features:

- Round or Tapered Switch Dogs
- Variety of Sizes
- Split Design Clamping Screw Provided
- Black Oxide Finish
- Metric Sizes Available Upon Request

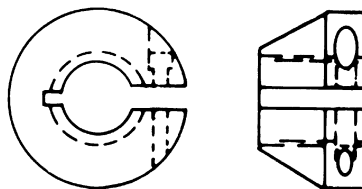


Types

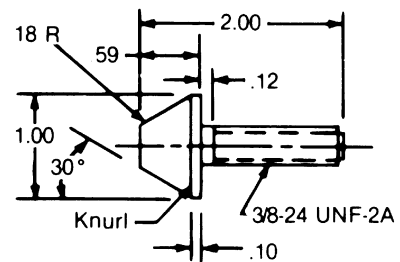
Round



Tapered



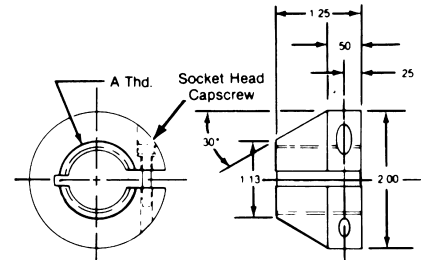
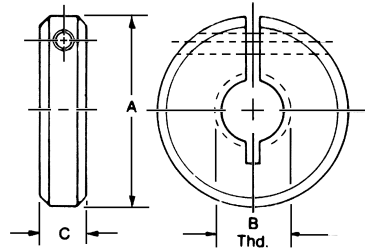
Push-Button Dog



Part No. E087

Both round and tapered E&E switch dogs are slotted and include a socket head capscrew to provide flexibility in positioning and locking the dogs in place on the threaded rod. This feature allows repeated changes in positioning without damage to the rod's threads. The grasping action of the thread itself holds the dog securely in place and eliminates the need for set screws or other destructive devices.

Switch Dogs



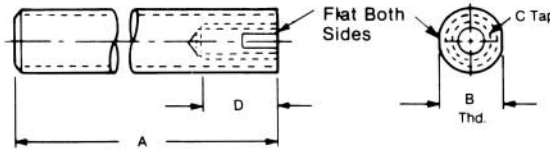
Tapered

CAD FILE NAME	E093	E094	E095
PART NUMBER	E093	E094	E095
A	7/16 - 20	3/4 - 16	1 - 14

Round

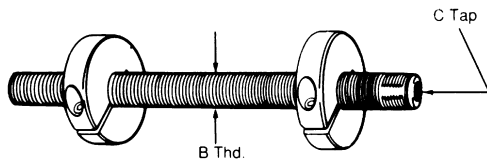
CAD FILE NAME	E069	E070	E071	E072	E073	E074	E075
PART NUMBER	E069	E070	E071	E072	E073	E074	E075
A DIA.	2.00	2.00	2.00	2.50	2.50	2.50	1.00
B THD.	7/16 - 20	1/2 - 20	5/8 - 18	3/4 - 16	1 - 14	1-1/2 - 12	5/16 - 24
C WIDTH	.62	.62	.62	.62	.62	.62	.38

Switch Rods



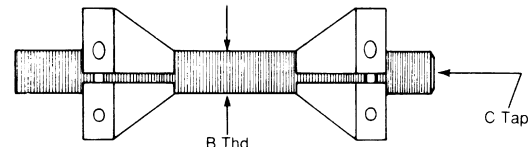
CAD FILE NAME	E078-6	E079-6	E080-6	E081-6	E082-6	E083-6	E084-6
PART NUMBER	E078	E079	E080	E081	E082	E083	E084
A	AVAILABLE IN 6", 8", 10", & 12" LENGTHS						
B THD.	5/16 - 24	7/16 - 20	1/2 - 20	5/8 - 18	3/4 - 16	1 - 14	1-1/2 - 12
C TAP	—	5/16 - 24	5/16 - 24	3/8 - 24	7/16 - 20	5/8 - 18	1 - 14
D	—	.63	.63	.75	.88	1.25	1.75
D TAP DEPTH	—	.63	.63	.75	.88	1.25	1.75

Switch Assemblies



With Conventional Switch Dogs

CAD FILE NAME	E999-6	E000-6	E003-6	E004-6	E005-6	E006-6	E007-6
PART NUMBER	E999	E000	E003	E004	E005	E006	E007
ROD LENGTH	AVAILABLE IN 6", 8", 10", & 12" LENGTHS						
B THD	5/16 - 24	7/16 - 20	1/2 - 20	5/8 - 18	3/4 - 16	1 - 14	1-1/2 - 12



With Single Tapered Switch Dog (Slotted Mount)

CAD FILE NAME	E993-6	E994-6	E995-6
PART NUMBER	E993	E994	E995
ROD LENGTH	AVAILABLE IN 6", 8", 10", & 12" LENGTHS		
B THD.	7/16 - 20	3/4 - 16	1 - 14

CAD Directory
 Cylinder-ACC\Dogsrods

"Stretch"
 The shortest standard component is given. You may "Stretch" the unit to the desired length.