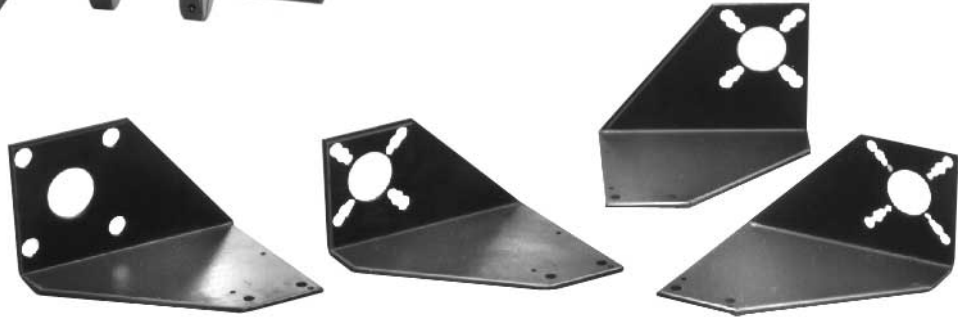


# Switch Brackets



## Features:

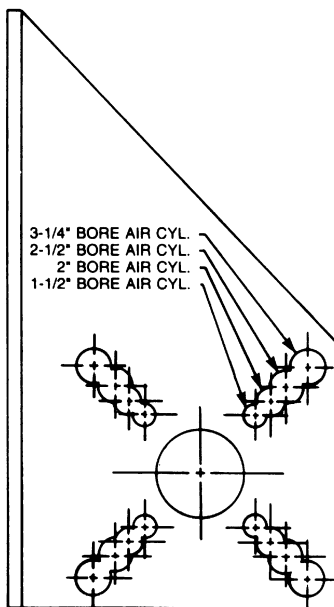
- Fits Air or Hydraulic J.I.C. Cylinders
- Accommodate Variety of Bore Sizes
- Pre-drilled for Mounting Most Standard Limit Switches
- Block Oxide Finish
- Right Hand or Left Hand Mounts



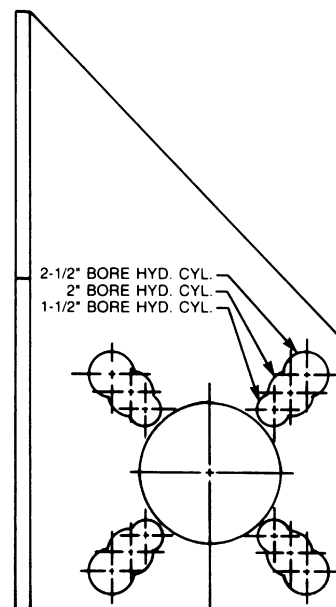
**Caution:** Due to the numerous Cylinder Switch manufacturers, we recommend that you verify all mounting dimensions prior to ordering Switch Brackets.

## Types

### Air Cylinder Mount



### Hydraulic Cylinder Mount



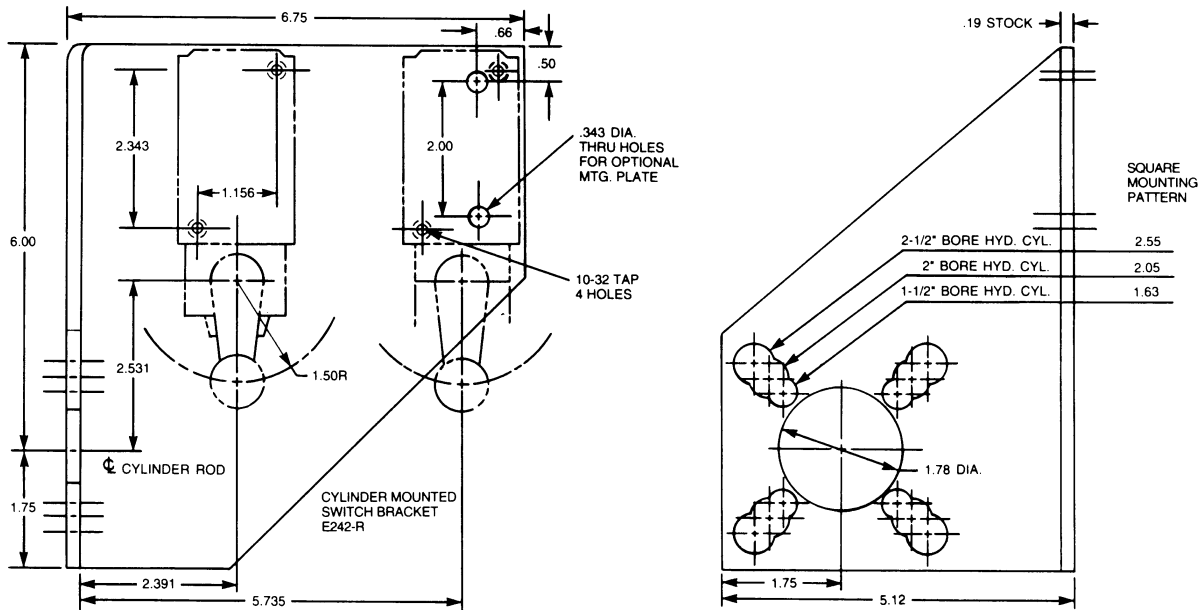
**NOTE:** TO FACILITATE MOUNTING OF THE SWITCH BRACKET TO THE CYLINDER, THE CYLINDER MUST BE PROVIDED WITH EXTENDED TIE RODS.

# Switch Brackets

For Heavy-Duty J.I.C. Hydraulic Cylinders Allowing Plug-In Limit Switches

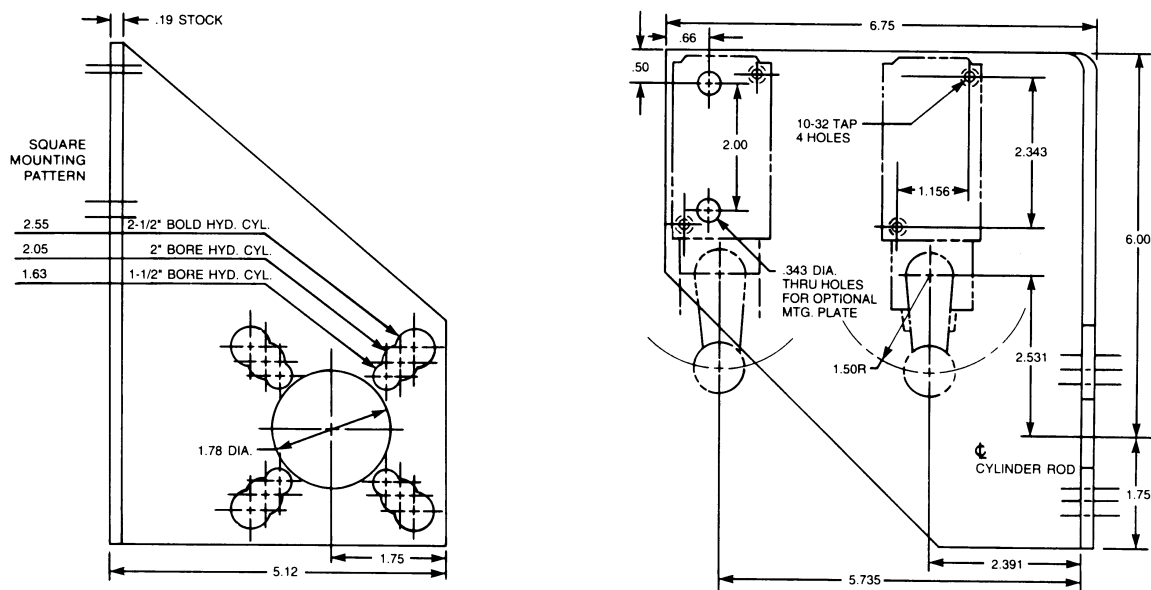
CAD File Name E242-R

Part No. E242-R



CAD File Name E242-L

Part No. E242-L



Cylinder Accessories

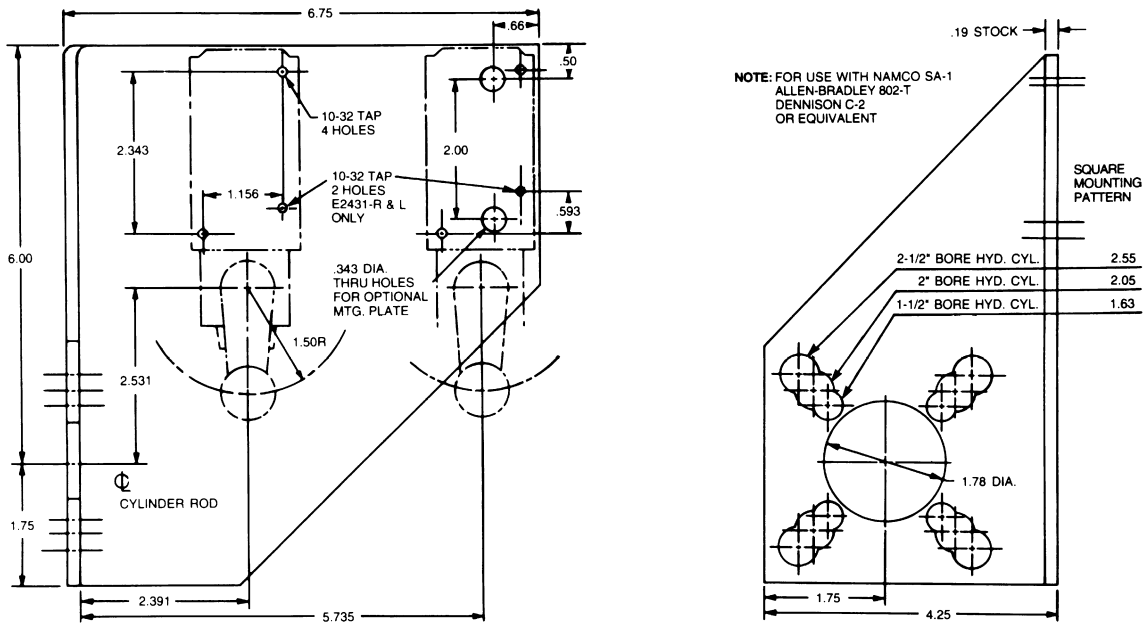


# Switch Brackets

For Heavy-Duty J.I.C. Hydraulic Cylinders

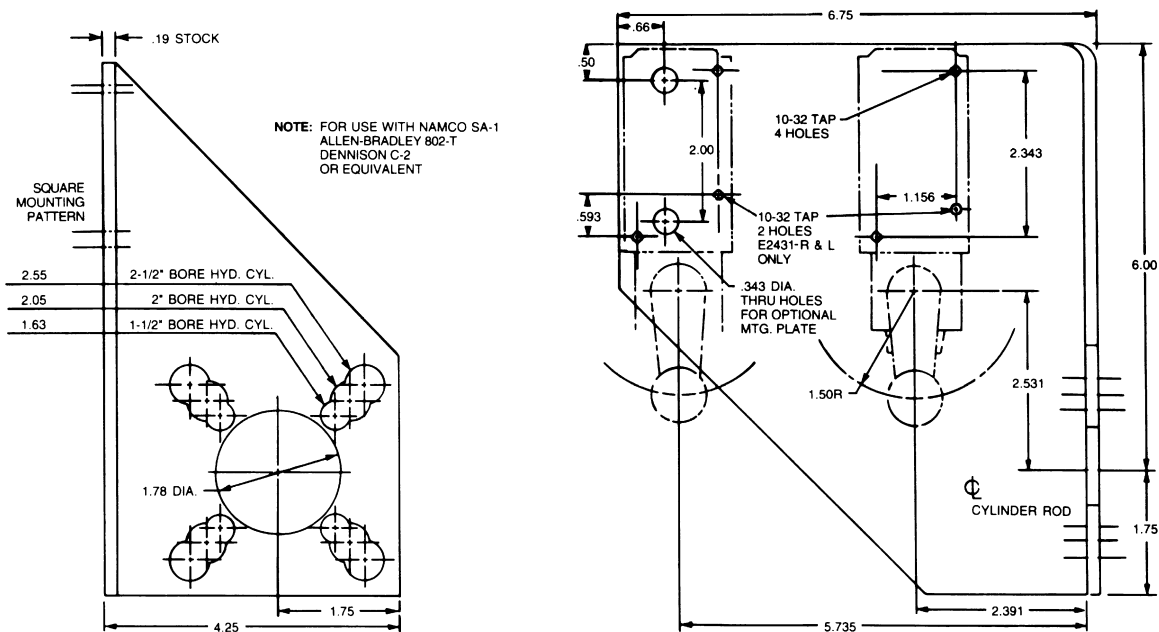
CAD File Name E243-R, E2431-R

Part No. E243-R, E2431-R



CAD File Name E243-L, E2431-L

Part No. E243-L, E2431-L



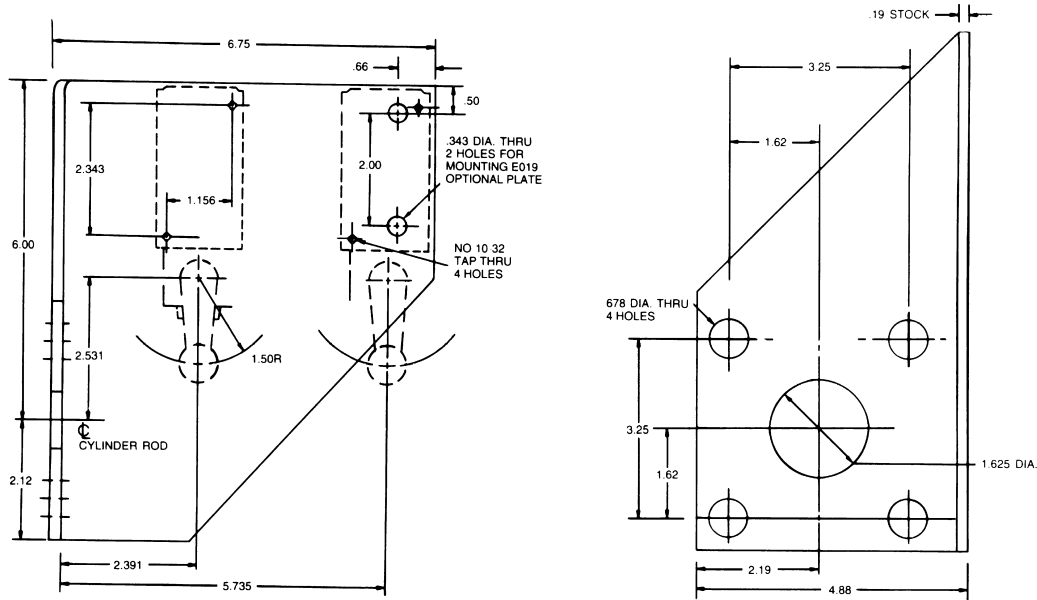
# Switch Brackets



For Heavy-Duty J.I.C. Hydraulic 3-1/4" Bore Cylinders

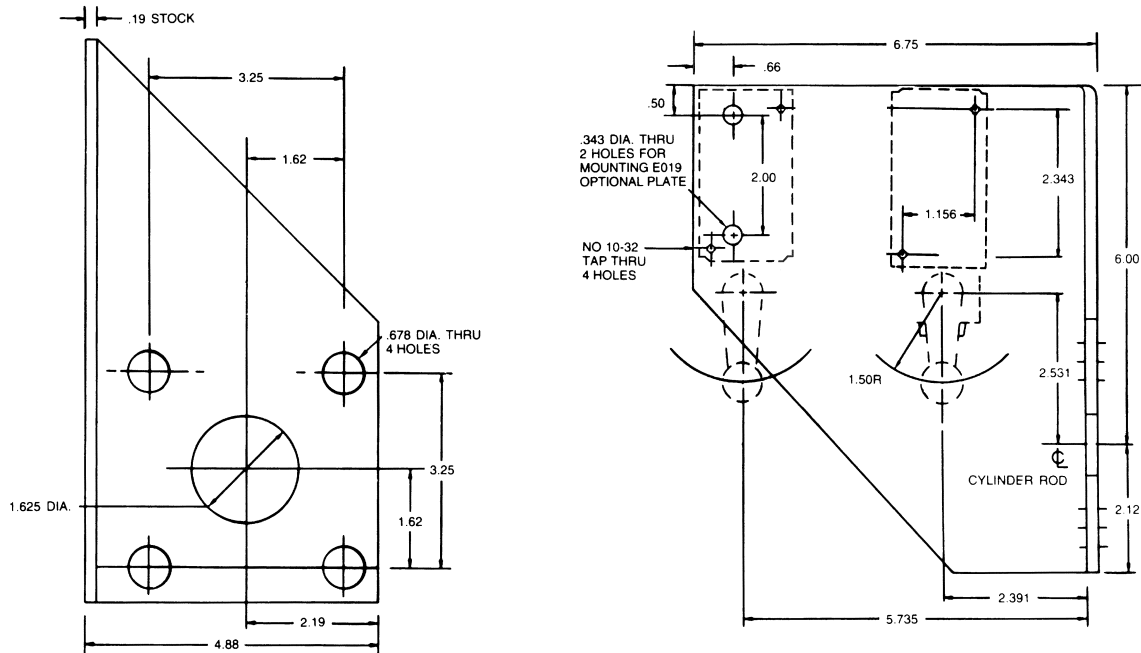
**CAD File Name E245-R**

**Part No. E245-R**



**CAD File Name E245-L**

**Part No. E245-L**



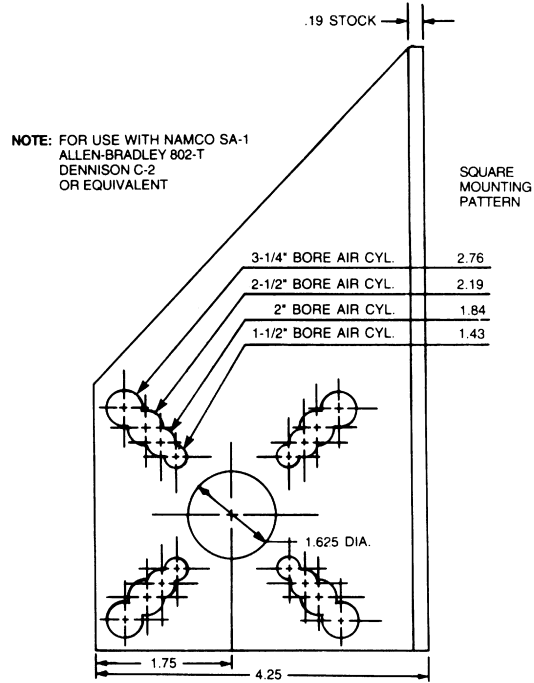
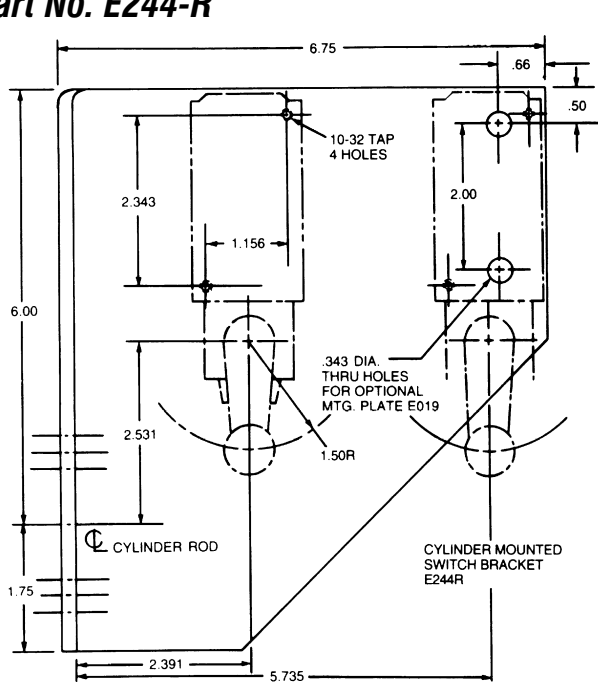


# Switch Brackets

For Air or Medium-Duty J.I.C. Hydraulic Cylinders

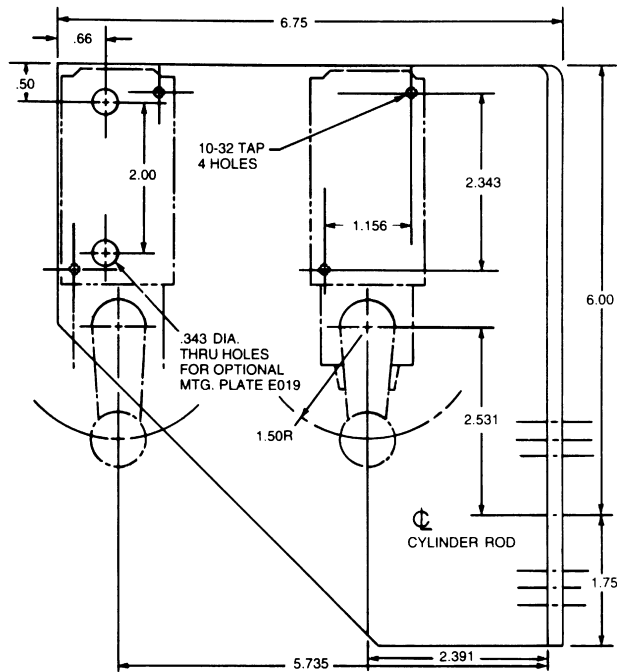
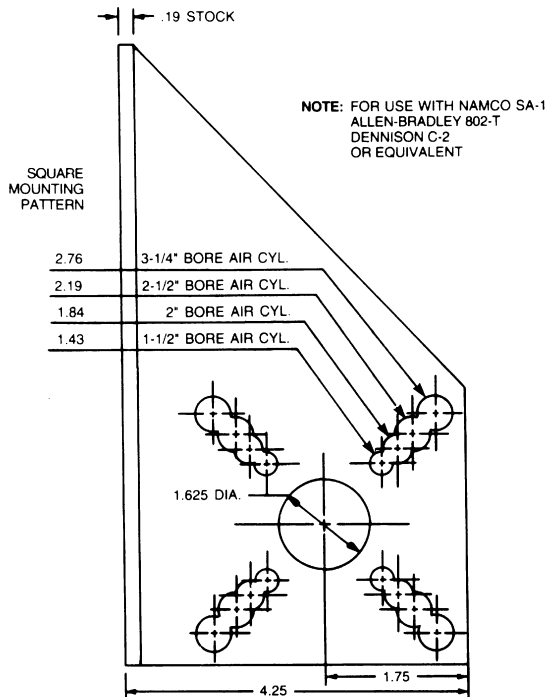
CAD File Name E244-R

Part No. E244-R



CAD File Name E244-L

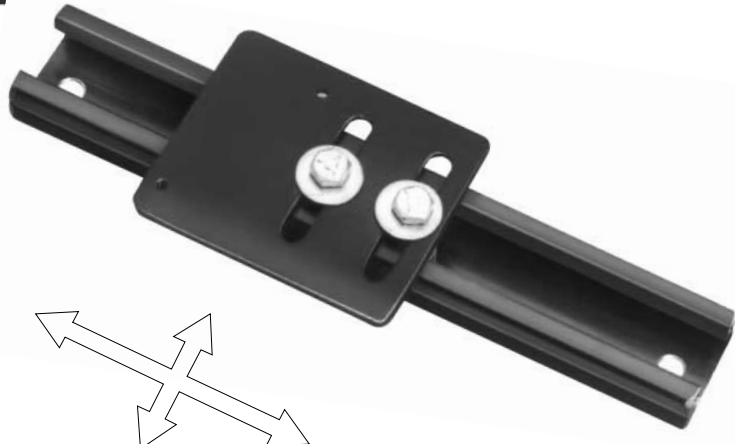
Part No. E244-L



# Adjustable Switch Brackets




**E&E SPECIAL PRODUCTS**  
 7200 MILLER DRIVE  
 WARREN, MI 48092  
**E&ESP** 586-978-3377 / 586-978-3378 FAX



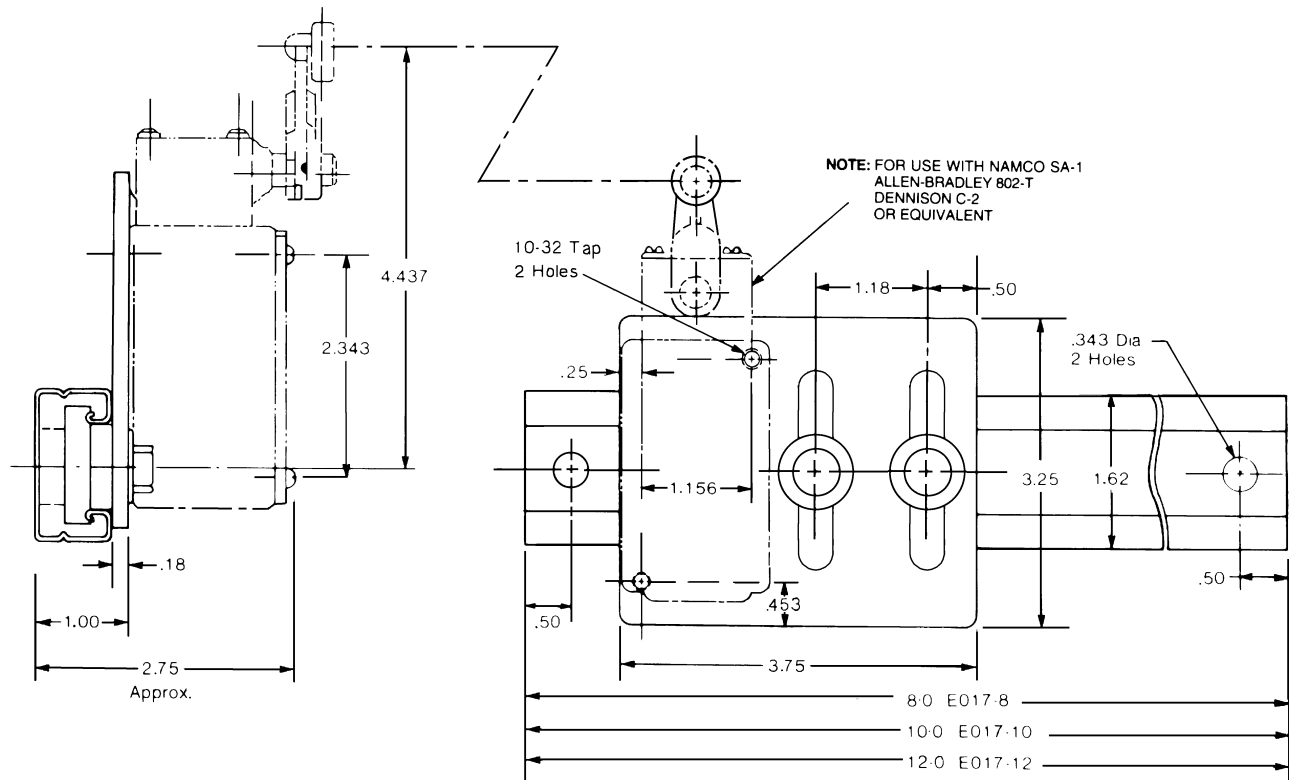
ADJUSTABLE  
2 AXIS

## Features:

- ❑ Variety of Channel Length
- ❑ Mounting Plate
- ❑ All Hardware for Positioning
- ❑ Special Lengths Available from Stock

**CAD File Name E017**

**Part No. E017-8, E017-10, E017-12**



Cylinder Accessories

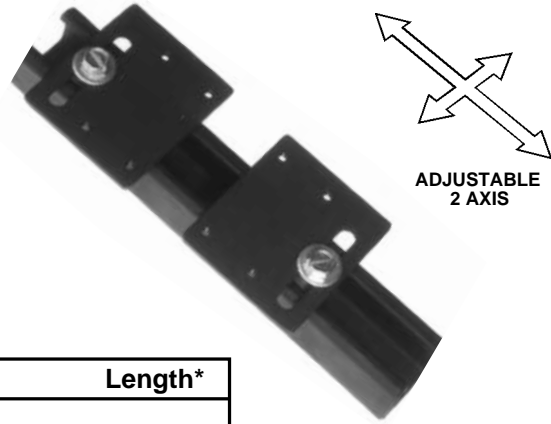
**CAD Directory**  
 Cylinder-ACC\SWBrack

**“Stretch”**  
 The shortest standard component is given. You may “Stretch” the unit to the desired length.

# Adjustable Proximity Switch Brackets

## Features:

- ❑ Adjustable Two Axis
  - ❑ Variety of Channel Lengths
  - ❑ Special Lengths Available from Stock
  - ❑ Accommodates Most Standard Proximity Switches
- Note: Check Mounting Dimensions of Proximity Switch Prior to Ordering
- ❑ May Be Mounted to a Standard Cylinder Bracket



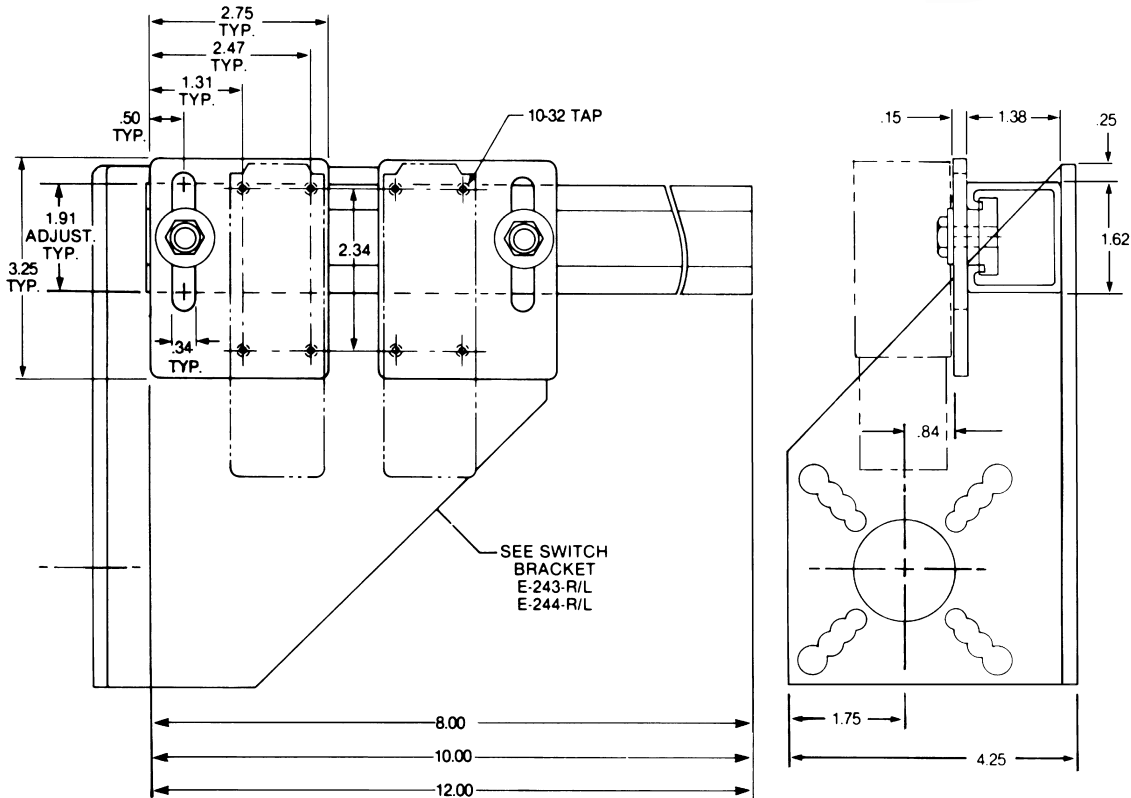
ADJUSTABLE  
2 AXIS



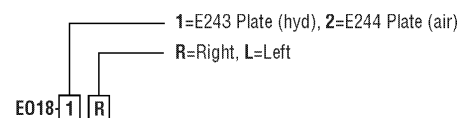
## Ordering Information

Part Number	Description	Length*
E018	Adjustable Proximity Switch Bracket (Includes 2 Plates, Hardware and Channel)	8-10-12
E018-D/1	(1) Plate and Hardware Only	—
E018-D/2	Channel Only	8-10-12
E018-243-R/L	Mounted to a Hydraulic Cylinder Mount Bracket	8-10-12
E018-244-R/L	Mounted to an Air Cylinder Mount Bracket	8-10-12

\*Specify Length on All Channels



### CAD File Name



### “Stretch”

The shortest standard component is given. You may “Stretch” the unit to the desired length.

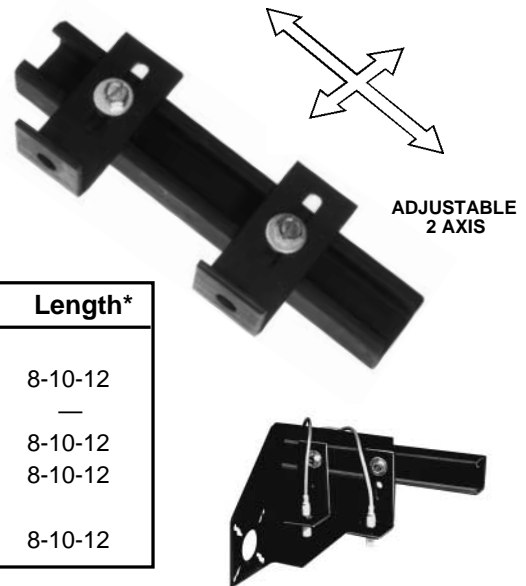
# Adjustable Threaded Proximity Switch Brackets



E&E SPECIAL PRODUCTS  
7200 MILLER DRIVE  
WARREN, MI 48092  
586-978-3377 / 586-978-3378 FAX

## Features:

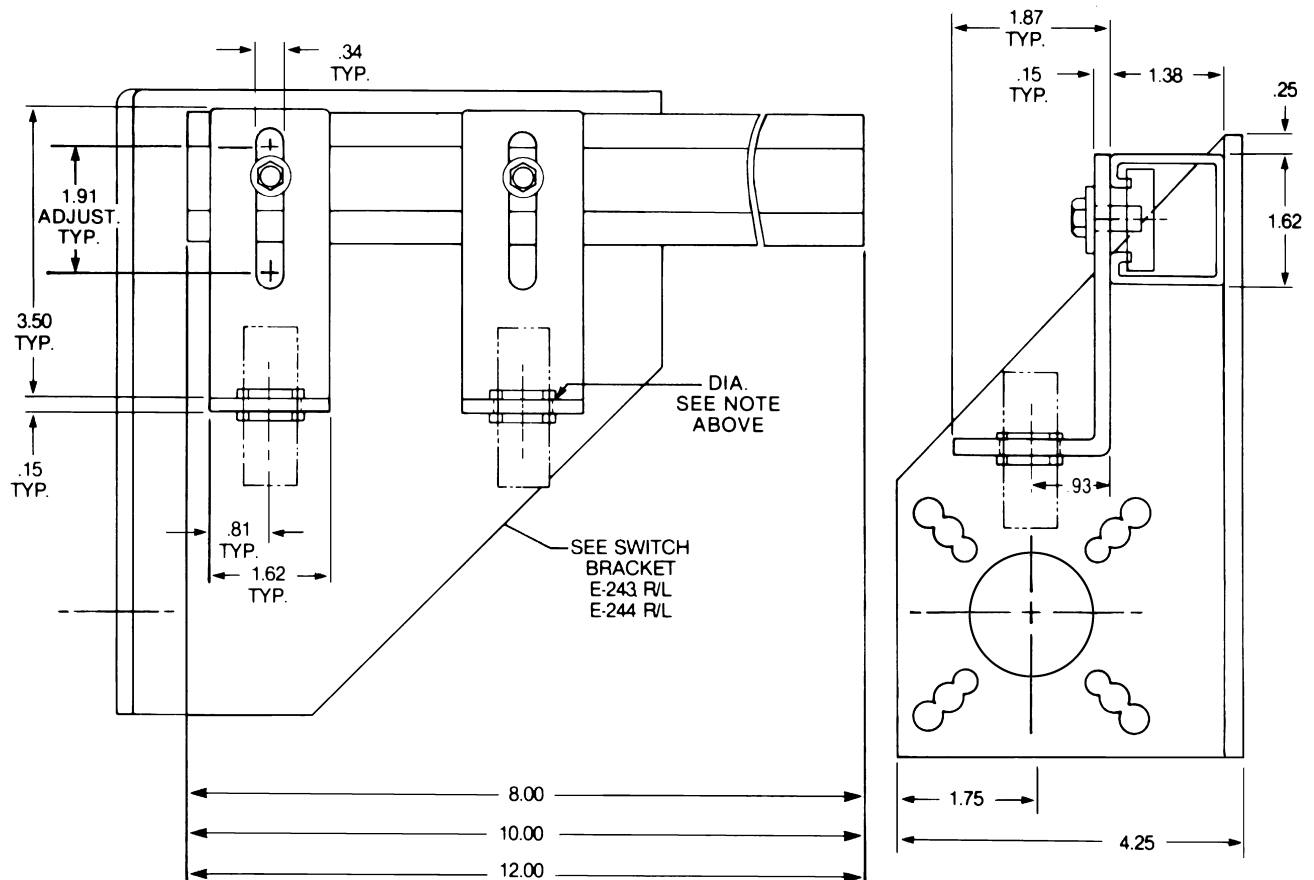
- Adjustable Two Axis
- Variety of Channel Lengths
- Special Lengths Available from Stock
- Provided with 1/2" Pilot Hole
- May Be Mounted to a Standard Cylinder Bracket



## Ordering Information

Part Number	Description	Length*
E019	Adjustable Threaded Proximity Switch Bracket (Includes 2 Angle Plates, Hardware and Channel)	8-10-12
E019-D/1	(1) Plate and Hardware Only	—
E019-D/2	Channel Only	8-10-12
E019-243-R/L	Mounted to a Hydraulic Cylinder Mount Bracket	8-10-12
E019-244-R/L	Mounted to an Air Cylinder Mount Bracket	8-10-12

\*Specify Length on All Channels



Cylinder Accessories

CAD Directory  
Cylinder-ACC\SWBrack

**“Stretch”**  
The shortest standard component is given. You may “Stretch” the unit to the desired length.

### CAD File Name

1=E243 Plate (hyd), 2=E244 Plate (air)  
R=Right, L=Left  
E019-1 R