

FIXTURE PINS



Tolerance Data & Standard Specifications

MATERIAL	TOLERANCE	HEAT TREAT
HARDENED & GROUND 8620	PIN DIA = .001 BELOW NOMINAL +.0000 -.0005	1/2 DIA OR LESS R"C" 50-52 .025-.035 DEEP 9/16 DIA AND UP R"C" 58-60 .035-.045 DEEP
STAINLESS 300 SERIES	UP TO 5/16" DIA EXCL. +.000/-0.001 5/16" — 1/2" DIA EXCL. +.000/-0.0015 1/2" DIA — 1" DIA EXCL. +.000/-0.002 1" DIA — 1-1/2" DIA EXCL. +.000/-0.0025 1-1/2" DIA — 4" DIA INCL. +.000/-0.003	N/A
MILD STEEL 8620	UP TO 1-1/2" DIA INCL. +.000 -.002 OVER 1-1/2" DIA — 2-1/2" DIA INCL. +.000 -.003 OVER 2-1/2" DIA — 4" DIA INCL. +.000 -.004	N/A
PREHARDENED A311 G & P	UP TO 1-1/2" DIA INCL. +.000 -.001 1-9/16" DIA — 2-7/16" DIA INCL. +.0000 -.0015 2-1/2" DIA — 3" DIA INCL. +.000 -.002 3-1/16" DIA — 4" DIA INCL. +.000 -.003	R" C" 22-30

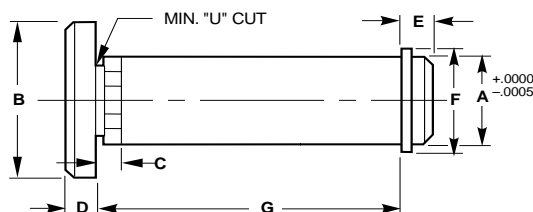
ALL E & E FIXTURES AND CLEVIS PINS ARE MADE TO THE FOLLOWING SPECIFICATIONS:

LENGTH = NOMINAL +.025

KNURL = NOMINAL +.007

LUBE OPTIONS = NOT AVAILABLE ON 1/4" AND 5/16" DIA PINS. 3/8" - 9/16" DIA PINS ARE FURNISHED WITH A 1/4-28-TAPPED HOLE. 3/8" - 9/16" DIA PINS CAN ONLY BE TAPPED ON THE END OPPOSITE THE RETAINER GROOVE. FOR PINS 5/8" DIA OR LARGER A 1/8 NPT IS FURNISHED.

Head Type Fixture Pin with Snap Ring



HEAD TYPE FIXTURE PIN WITH SNAP RING

DIMENSIONAL INFORMATION								
CAD FILE NAME	PIN DIA.	A	B	C	D	E	F	*G 1/4" INCR
KSFIXTPIN	1/4	.249	.375	.25	.125	.125	.54	1"-2"
	3/8	.374	.500	.25	.125	.130	.68	1"-3"
	1/2	.499	.625	.25	.125	.139	.82	1"-3"
	5/8	.624	.750	.25	.156	.165	.96	1"-3"
	3/4	.749	.937	.25	.156	.180	1.14	1"-4"
	7/8	.874	1.063	.25	.156	.256	1.32	1"-4"
	1	.999	1.187	.25	.187	.256	1.53	1 1/2"-5"
	1 1/8	1.124	1.375	.25	.187	.256	1.55	1 1/2"-5"
	1 1/4	1.249	1.437	.25	.250	.256	1.69	2"-6"
	1 3/8	1.374	1.625	.25	.250	.256	1.80	2"-6"
	1 1/2	1.499	1.750	.25	.250	.256	1.99	2"-6"

*G = LENGTH IN 1/4" INCREMENTS, OTHER LENGTHS AVAILABLE UPON REQUEST

H = 1/2 G UNLESS OTHERWISE SPECIFIED

H1 = LOCATION OF ADDITIONAL CROSSHOLE IF REQUIRED

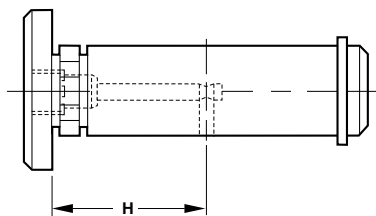
LUBE OPTION:

ADD "PT", "PT2" OR "RPT" AFTER PIN TYPE

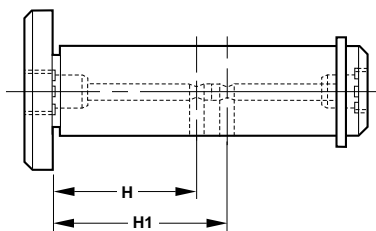
Type	Description
S	HARDENED AND GROUND, SMOOTH
SS	STAINLESS, SMOOTH
SU	MILD STEEL, SMOOTH
SP	PREHARDENED, SMOOTH
K	HARDENED AND GROUND, KNURLED
KS	STAINLESS, KNURLED
KU	MILD STEEL, KNURLED
KP	PREHARDENED, KNURLED

CAD Directory
Mach-Tool\FixtPin

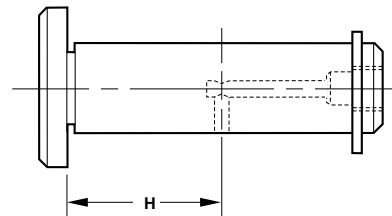
PIPE TAP LUBE OPTION PT



PIPE TAP LUBE OPTION = PT 2



PIPE TAP LUBE OPTION = RPT



ORDERING INFORMATION

Specify: Pin Dia — Length — Type —
Lube Option — "H" Dim —
"H1" Dim

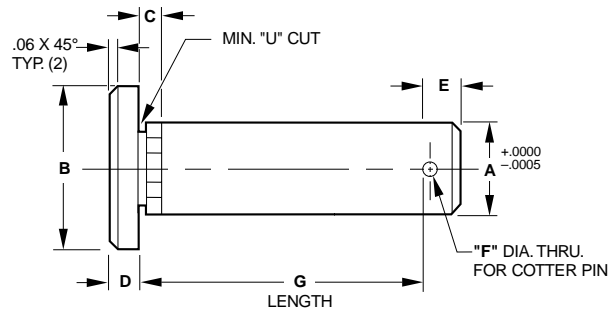
Example: 34-212-S-PT

ALL PIN DIMENSIONS ARE GIVEN AS FRACTIONS. 34 = 3/4, 212 = 2-1/2

"Stretch"

The shortest standard component is given. You may "Stretch" the unit to the desired length.

Clevis Pins



HEAD TYPE FIXTURE PIN WITH COTTER PIN

DIMENSIONAL INFORMATION								
CAD FILE NAME	PIN DIA.	A	B	C	D	E	F	*G 1/4" INCR
KSCLEVPIN	1/4	.249	.375	.25	.125	.190	.093	1"-2"
	3/8	.374	.500	.25	.125	.190	.093	1"-3"
	1/2	.499	.625	.25	.125	.190	.093	1"-3"
	5/8	.624	.750	.25	.156	.250	.125	1"-3"
	3/4	.749	.937	.25	.156	.250	.125	1"-4"
	7/8	.874	1.063	.25	.156	.250	.125	1"-4"
	1	.999	1.187	.25	.187	.250	.125	1 1/2"-5"
	1 1/8	1.124	1.375	.25	.187	.310	.190	1 1/2"-5"
	1 1/4	1.249	1.437	.25	.250	.310	.190	2"-6"
	1 3/8	1.374	1.625	.25	.250	.375	.250	2"-6"
	1 1/2	1.499	1.750	.25	.250	.375	.250	2"-6"

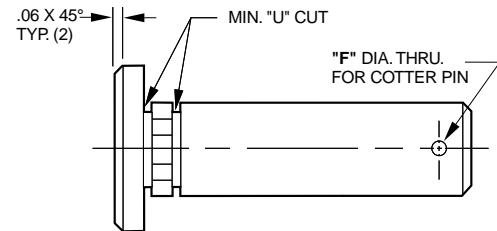
*G = LENGTH IN 1/4" INCREMENTS, OTHER LENGTHS
AVAILABLE UPON REQUEST

H = 1/2 G UNLESS OTHERWISE SPECIFIED

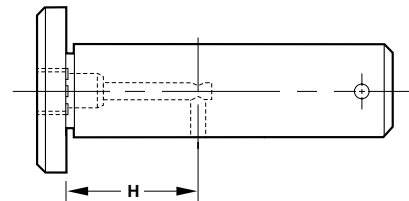
LUBE OPTION:

ADD "PT", AFTER PIN TYPE

HEAD TYPE COTTER PIN SHAFT WITH KNURL



PIPE TAP LUBE OPTION = PT



ORDERING INFORMATION

Specify: Pin Dia — Length — Type —
Lube Option — "H" Dim

Example: 12-314-SCP-PT-34

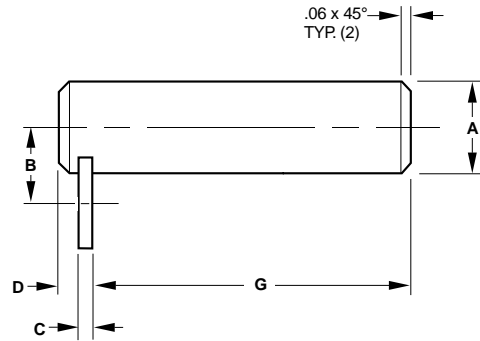
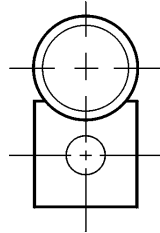
ALL PIN DIMENSIONS ARE GIVEN AS FRACTIONS. 12 = 1/2, 314 = 3-1/4, 34 = 3/4

Type	Description
SC	HARDENED AND GROUND, SMOOTH COTTER
SCS	STAINLESS, SMOOTH, COTTER
SCU	MILD STEEL, SMOOTH, COTTER
SCP	PREHARDENED, SMOOTH, COTTER
KC	HARDENED AND GROUND, KNURLED, COTTER
KCS	STAINLESS, KNURLED, COTTER
KCU	MILD STEEL, KNURLED, COTTER
KCP	PREHARDENED, KNURLED, COTTER

"Stretch"

The shortest standard component is given. You may "Stretch" the unit to the desired length.

Headless Fixture Pin with Retainer



HEADLESS FIXTURE PIN WITH RETAINER

DIMENSIONAL INFORMATION						
CAD FILE NAME	PIN DIA.	*A	B	C	D	*G 1/4" INCR
HRFIXTPIN	1/4	.250	.375	.12	.25	1"-2"
	5/16	.312	.406	.12	.25	1"-3"
	3/8	.375	.437	.12	.25	1"-3"
	7/16	.438	.469	.12	.25	1"-3"
	1/2	.500	.500	.12	.25	1"-3"
	9/16	.562	.531	.12	.25	1"-3"
	5/8	.625	.562	.12	.25	1"-3"
	11/16	.688	.594	.12	.25	1"-4"
	3/4	.750	.625	.12	.25	1"-4"
	13/16	.812	.656	.12	.25	1"-4"
	7/8	.875	.688	.12	.25	1"-4"
	15/16	.938	.719	.12	.25	1 1/2"-5"
	1	1.000	.750	.12	.25	1 1/2"-5"
	1-1/8	1.125	.813	.25	.50	1 1/2"-5"
	1-1/4	1.250	.875	.25	.50	2"-6"
	1-3/8	1.375	.938	.25	.50	2"-6"
	1-1/2	1.500	1.000	.25	.50	2"-6"
	1-3/4	1.750	1.125	.25	.50	3"-8"
	2	2.000	1.250	.25	.50	3"-8"
	2-1/4	2.250	1.375	.25	.50	3"-8"
2-1/2	2.500	1.500	.25	.50	4"-12"	
3	3.000	1.875	.25	.50	4"-12"	
3-1/2	3.500	2.125	.25	.50	6"-14"	
4	4.000	2.375	.25	.50	6"-14"	

*A = FOR TOLERANCE INFORMATION SEE PAGE D-12

*G = LENGTH IN 1/4" INCREMENTS, OTHER LENGTHS

AVAILABLE UPON REQUEST

H = 1/2 G UNLESS OTHERWISE SPECIFIED

H1 = LOCATION OF ADDITIONAL CROSSHOLE IF REQUIRED

LUBE OPTION:

ADD "PT" "PT2" OR "RPT" AFTER PIN TYPE

*RETAINER OPTION:

RETAINER #E-2R SUPPLIED ON 1/4" - 1" DIA PINS.

RETAINER #13-RD SUPPLIED ON 1-1/8"-1-3/4" DIA PINS,

RETAINER #7-RD SUPPLIED ON 2"-2-1/2" DIA PINS

RETAINER #8-RD SUPPLIED ON 3"-4" DIA PINS UNLESS

OTHERWISE SPECIFIED. DO NOT SPECIFY WHEN

STANDARD RETAINER IS REQUIRED.

SEE PGE D-23 FOR ADDITIONAL RETAINER OPTIONS.

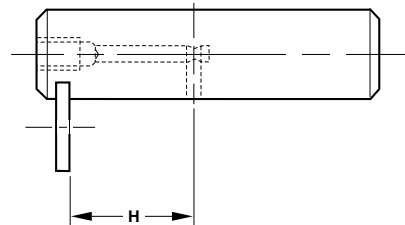
"Stretch"

The shortest standard component is given.

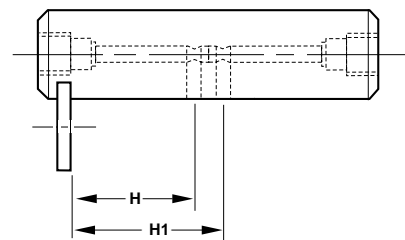
You may "Stretch" the unit to the desired length.

CAD Directory
Mach-Tool\FixtPin

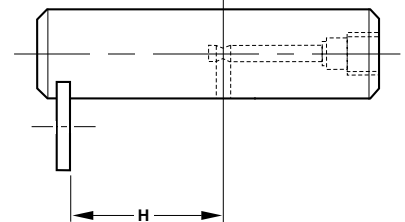
PIPE TAP LUBE OPTION = PT



PIPE TAP LUBE OPTION = PT2



PIPE TAP LUBE OPTION = RPT



Type

Description

HR	HARDENED AND GROUND
HRS	STAINLESS
HRU	MILD STEEL
HRP	PREHARDENED, GROUND AND POLISHED

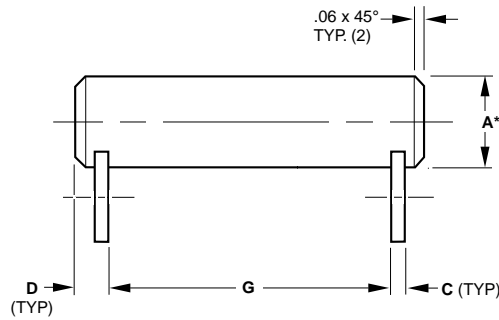
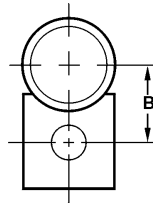
ORDERING INFORMATION

Specify: Pin Dia — Length — Type — Lube Option — "H" Dim — "H1" Dim — *Retainer

Example: 12-212-HR-PT-E1-RD

ALL PIN DIMENSIONS ARE GIVEN AS FRACTIONS. 12 = 1/2, 212 = 2-1/2

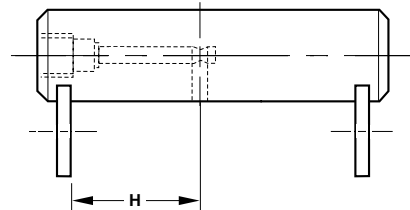
Headless Fixture Pin with Double Retainer



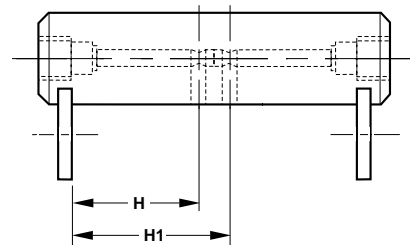
HEADLESS FIXTURE PIN WITH DOUBLE RETAINER

DIMENSIONAL INFORMATION						
CAD FILE NAME	PIN DIA.	*A	B	C	D	*G 1/4" INCR
HDRFIXTPIN	1/4	.250	.375	.12	.25	1"-2"
	5/16	.312	.406	.12	.25	1"-3"
	3/8	.375	.437	.12	.25	1"-3"
	7/16	.438	.469	.12	.25	1"-3"
	1/2	.500	.500	.12	.25	1"-3"
	9/16	.562	.531	.12	.25	1"-3"
	5/8	.625	.562	.12	.25	1"-3"
	11/16	.688	.594	.12	.25	1"-4"
	3/4	.750	.625	.12	.25	1"-4"
	13/16	.812	.656	.12	.25	1"-4"
	7/8	.875	.688	.12	.25	1"-4"
	15/16	.938	.719	.12	.25	1-1/2"-5"
	1	1.000	.750	.12	.25	1-1/2"-5"
	1-1/8	1.125	.813	.25	.50	1-1/2"-5"
	1-1/4	1.250	.875	.25	.50	2"-6"
	1-3/8	1.375	.938	.25	.50	2"-6"
	1-1/2	1.500	1.000	.25	.50	2"-6"
	1-3/4	1.750	1.125	.25	.50	3"-8"
	2	2.000	1.250	.25	.50	3"-8"
	2-1/4	2.250	1.375	.25	.50	3"-8"
2-1/2	2.500	1.500	.25	.50	4"-12"	
3	3.000	1.875	.25	.50	4"-12"	
3-1/2	3.500	2.125	.25	.50	6"-14"	
4	4.000	2.375	.25	.50	6"-14"	

PIPE TAP LUBE OPTION = PT



PIPE TAP LUBE OPTION = PT2



ORDERING INFORMATION

Specify: Pin Dia — Length — Type — Lube Option — "H" Dim — "H1" Dim — *Retainer Option

Example: 34-3-HDR-PT2-114-134

ALL PIN DIMENSIONS ARE GIVEN AS FRACTIONS. 34 = 3/4, 3 = 3, 114 = 1-1/4, 134 = 1-3/4

*A = FOR TOLERANCE INFORMATION SEE PAGE D-12

*G = LENGTH IN 1/4" INCREMENTS, OTHER LENGTHS AVAILABLE UPON REQUEST

H = 1/2 G UNLESS OTHERWISE SPECIFIED

H1 = LOCATION OF ADDITIONAL CROSSHOLE IF REQUIRED

LUBE OPTION:

ADD "PT" OR "PT2" AFTER PIN TYPE

*RETAINER OPTION:

RETAINER #E-2R SUPPLIED ON 1/4" - 1" DIA PINS.
 RETAINER #13-RD SUPPLIED ON 1-1/8"-1-3/4" DIA PINS,
 RETAINER #7-RD SUPPLIED ON 2"-2-1/2" DIA PINS
 RETAINER #8-RD SUPPLIED ON 3"-4" DIA PINS UNLESS OTHERWISE SPECIFIED. DO NOT SPECIFY WHEN STANDARD RETAINER IS REQUIRED.
 SEE PGE D-23 FOR ADDITIONAL RETAINER OPTIONS.

Type

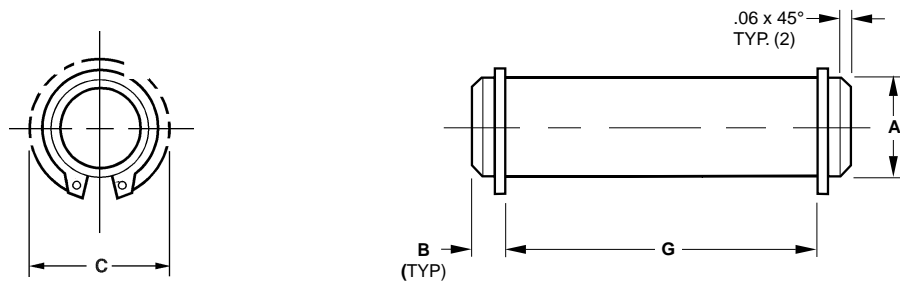
Description

HDR	HARDENED AND GROUND
HDRS	STAINLESS
HDRU	MILD STEEL
HDRP	PREHARDENED, GROUND AND POLISHED

"Stretch"

The shortest standard component is given. You may "Stretch" the unit to the desired length.

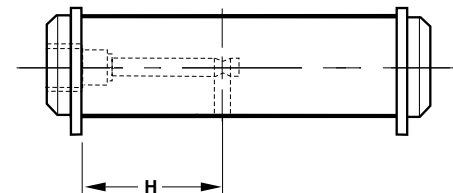
Headless Fixture Pin with Double Snap Ring



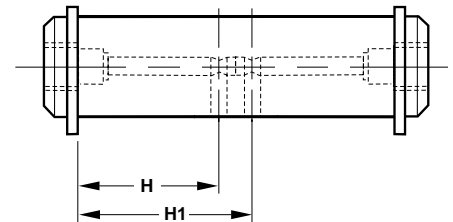
HEADLESS FIXTURE PIN WITH DOUBLE SNAP RING

DIMENSIONAL INFORMATION					
CAD FILE NAME	PIN DIA.	A	B	C	*G 1/4" INCR
SXFIXTPIN	1/4	.250	.125	.54	1"-2"
	3/8	.375	.130	.68	1"-3"
	1/2	.500	.139	.82	1"-3"
	5/8	.625	.165	.96	1"-3"
	3/4	.750	.180	1.14	1"-4"
	7/8	.875	.256	1.32	1"-4"
	1	1.000	.256	1.53	1-1/2"-5"
	1-1/8	1.125	.256	1.55	1-1/2"-5"
	1-1/4	1.250	.256	1.69	2"-6"
	1-3/8	1.375	.256	1.80	2"-6"
	1-1/2	1.500	.256	1.99	2"-6"
	1-3/4	1.750	.256	2.21	3"-8"
	2	2.000	.256	2.44	3"-8"
	2-1/4	2.250	.281	2.87	3"-8"
2-1/2	2.500	.296	3.12	4"-12"	

PIPE TAP LUBE OPTION = PT



PIPE TAP LUBE OPTION = PT2



*A = FOR TOLERANCE DATA SEE PAGE D-12

*G = LENGTH IN 1/4" INCREMENTS, OTHER LENGTHS AVAILABLE UPON REQUEST

H = 1/2 G UNLESS OTHERWISE SPECIFIED

H1 = LOCATION OF ADDITIONAL CROSSHOLE IF REQUIRED

LUBE OPTION:

ADD "PT" OR "PT2" AFTER PIN TYPE

ORDERING INFORMATION

Specify: Pin Dia — Length — Type — Lube Option — "H" Dim — "H1" Dim

Example: 38-114-SXP-PT

ALL PIN DIMENSIONS ARE GIVEN AS FRACTIONS. 38 = 3/8, 114 = 1-1/4

Type	Description
SX	HARDENED AND GROUND, DOUBLE SNAP RING
SXS	STAINLESS, DOUBLE SNAP RING
SXU	MILD STEEL, DOUBLE SNAP RING
SXP	PREHARDENED, GROUND AND POLISHED, DOUBLE SNAP RING

CAD Directory
Mach-Tool\FPin

"Stretch"

The shortest standard component is given. You may "Stretch" the unit to the desired length.

Headless Fixture Pin with Set Screw

SET SCREW FIXTURE PIN

DIMENSIONAL INFORMATION					
CAD FILE NAME	PIN DIA.	*A	B	C	*G 1/4" INCR
HSFIXTPIN	1/4	.250	*	.250	1"-2"
	5/16	.312	*	.250	1"-3"
	3/8	.375	*	.375	1"-3"
	7/16	.438	*	.375	1"-3"
	1/2	.500	*	.375	1"-3"
	9/16	.562	*	.375	1"-3"
	5/8	.625	*	.500	1"-3"
	11/16	.688	*	.500	1"-4"
	3/4	.750	*	.500	1"-4"
	13/16	.812	*	.500	1"-4"
	7/8	.875	*	.500	1"-4"
	15/16	.938	*	.500	1 1/2"-5"
	1	1.000	*	.500	1 1/2"-5"
	1-1/8	1.125	*	.500	1 1/2"-5"
	1-1/4	1.250	*	.500	2"-6"
	1-3/8	1.375	*	.500	2"-6"
	1-1/2	1.500	*	.500	2"-6"
	1-3/4	1.750	*	.500	3"-8"
	2	2.000	*	.500	3"-8"
	2-1/4	2.250	*	.500	3"-8"
2-1/2	2.500	*	.500	4"-12"	
3	3.000	*	.500	4"-12"	
3-1/2	3.500	*	.500	6"-14"	
4	4.000	*	.500	6"-14"	

*A = FOR TOLERANCE INFORMATION SEE PAGE D-12

*B = SPECIFY LOCATION

*G = LENGTH IN 1/4" INCREMENTS, OTHER LENGTHS

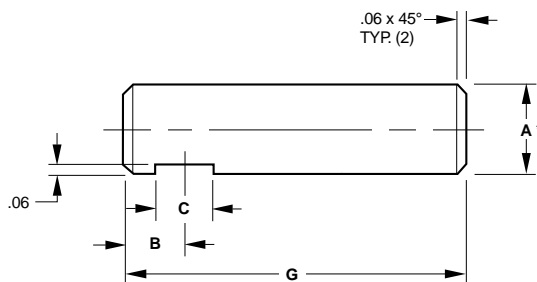
AVAILABLE UPON REQUEST

H = 1/2 G UNLESS OTHERWISE SPECIFIED

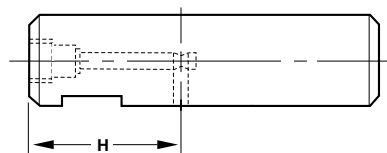
H1 = LOCATION OF ADDITIONAL CROSSHOLE IF REQUIRED

LUBE OPTION:

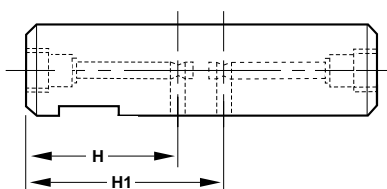
ADD "PT", "PT2" OR "RPT" AFTER PIN TYPE



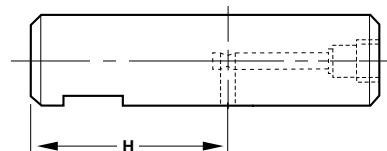
PIPE TAP LUBE OPTION = PT



PIPE TAP LUBE OPTION = PT2



PIPE TAP LUBE OPTION = RPT



ORDERING INFORMATION

Specify: Pin Dia — Length — Type —
Lube Option — "B" Dim —
"H" Dim — "H1" Dim

Example: 12-212-HS-PT-12-134

ALL PIN DIMENSIONS ARE GIVEN AS FRACTIONS. 12 = 1/2, 212 = 2-1/2, 12 = 1/2, 134 = 1-3/4

Type	Description
HS	HARDENED AND GROUND
HSS	STAINLESS
HSU	MILD STEEL
HSP	PREHARDENED, GROUND AND POLISHED

"Stretch"

The shortest standard component is given. You may "Stretch" the unit to the desired length.

Headless Fixture Pin with Double Set Screw

SET SCREW FIXTURE PIN W/DOUBLE FLAT

DIMENSIONAL INFORMATION						
CAD FILE NAME	PIN DIA.	*A	B	C	D	*G 1/4" INCR
HDSFIXTPIN	1/4	.250	*	.250	*	1"-2"
	5/16	.312	*	.250	*	1"-3"
	3/8	.375	*	.375	*	1"-3"
	7/16	.438	*	.375	*	1"-3"
	1/2	.500	*	.375	*	1"-3"
	9/16	.562	*	.375	*	1"-3"
	5/8	.625	*	.500	*	1"-3"
	11/16	.688	*	.500	*	1"-4"
	3/4	.750	*	.500	*	1"-4"
	13/16	.812	*	.500	*	1"-4"
	7/8	.875	*	.500	*	1"-4"
	15/16	.938	*	.500	*	1-1/2"-5"
	1	1.000	*	.500	*	1-1/2"-5"
	1-1/8	1.125	*	.500	*	1-1/2"-5"
	1-1/4	1.250	*	.500	*	2"-6"
	1-3/8	1.375	*	.500	*	2"-6"
	1-1/2	1.500	*	.500	*	2"-6"
	1-3/4	1.750	*	.500	*	3"-8"
	2	2.000	*	.500	*	3"-8"
	2-1/4	2.250	*	.500	*	3"-8"
	2-1/2	2.500	*	.500	*	4"-12"
	3	3.000	*	.500	*	4"-12"
	3-1/2	3.500	*	.500	*	6"-14"
	4	4.000	*	.500	*	6"-14"

*A = FOR TOLERANCE DATA SEE PAGE D-12

*B = SPECIFY LOCATION AFTER PIN TYPE

*G = LENGTH IN 1/4" INCREMENTS, OTHER LENGTHS AVAILABLE UPON REQUEST

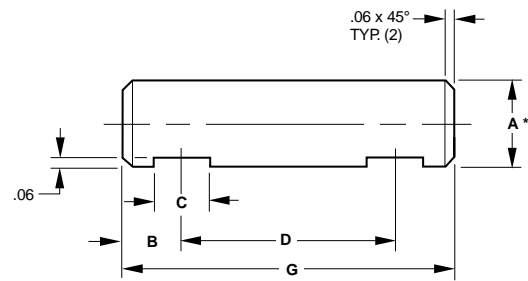
*D = SPECIFY DISTANCE BETWEEN CENTER LINE OF FLATS

H = LOCATION OF CROSSHOLE

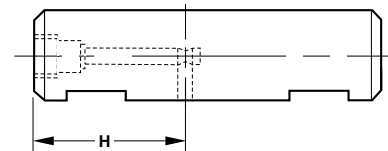
H1 = LOCATION OF ADDITIONAL CROSSHOLE IF REQUIRED

LUBE OPTION:

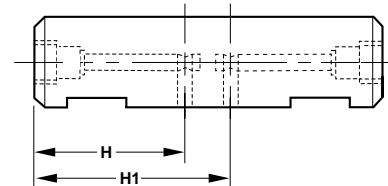
ADD "PT" OR "PT2" AFTER PIN TYPE



PIPE TAP LUBE OPTION = PT



PIPE TAP LUBE OPTION = PT2



Type	Description
HDS	HARDENED AND GROUND
HDSS	STAINLESS
HDSU	MILD STEEL
HDSP	PREHARDENED, GROUND AND POLISHED

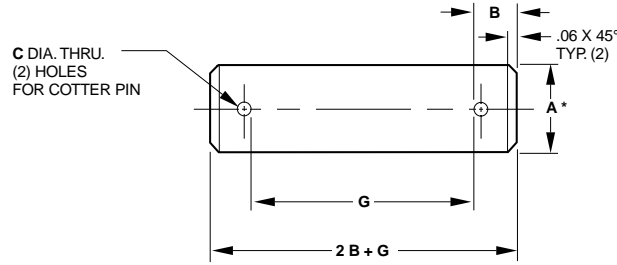
ORDERING INFORMATION

Specify: Pin Dia — Length — Type —
Lube Option — "B" Dim — "D" Dim —
"H" Dim — "H1" Dim

Example: 112-312-HDS-PT-1-112-2

ALL PIN DIMENSIONS ARE GIVEN AS FRACTIONS. 112 = 1-1/2, 312 = 3-1/2, 1 = 1, 112 = 1-1/2, 2 = 2

Headless Fixture Pin with Double Cotter Pin



HEADLESS FIXTURE PIN WITH DOUBLE COTTER PIN

DIMENSIONAL INFORMATION					
CAD FILE NAME	PIN DIA.	*A	B	C	*G 1/4" INCR
HDCFIXTPIN	1/4	.250	.188	.093	1"-2"
	5/16	.312	.188	.125	1"-3"
	3/8	.375	.250	.125	1"-3"
	7/16	.438	.250	.125	1"-3"
	1/2	.500	.250	.125	1"-3"
	9/16	.562	.250	.125	1"-3"
	5/8	.625	.250	.125	1"-3"
	11/16	.688	.250	.125	1"-4"
	3/4	.750	.250	.156	1"-4"
	13/16	.812	.250	.156	1"-4"
	7/8	.875	.250	.156	1"-4"
	15/16	.938	.250	.156	1-1/2"-5"
	1	1.000	.250	.156	1-1/2"-5"
	1-1/8	1.125	.375	.187	1-1/2"-5"
	1-1/4	1.250	.375	.187	2"-6"
	1-3/8	1.375	.375	.187	2"-6"
	1-1/2	1.500	.375	.187	2"-6"
	1-3/4	1.750	.375	.187	3"-8"
	2	2.000	.375	.187	3"-8"
	2-1/4	2.250	.375	.187	3"-8"
2-1/2	2.500	.375	.187	4"-12"	
3	3.000	.500	.250	4"-12"	

*A = FOR TOLERANCE DATA SEE PAGE D-12

*G = LENGTH IN 1/4" INCREMENTS, OTHER LENGTHS AVAILABLE UPON REQUEST

Type	Description
HDC	HARDENED AND GROUND
HDCS	STAINLESS
HDCU	MILD STEEL
HDCP	PREHARDENED, GROUND AND POLISHED

CAD Directory
Mach-Tool\FixtPin

ORDERING INFORMATION

Specify: Pin Dia. — Length — Type

Example: 58-114-HDCP

ALL PIN DIMENSIONS ARE GIVEN AS FRACTIONS. 58= 5/8, 114 = 1-1/4

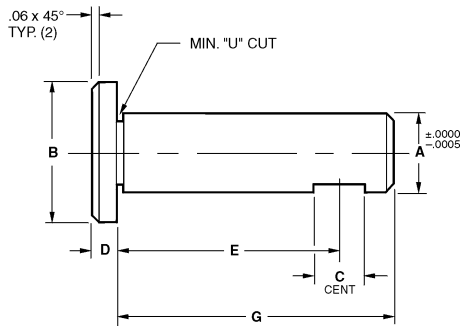
"Stretch"

The shortest standard component is given. You may "Stretch" the unit to the desired length.

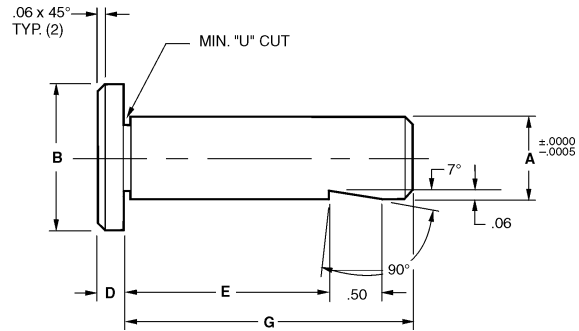
Head Type Fixture Pin with Set Screw Flat & Whistle Notch



HEAD TYPE SHAFT WITH SET SCREW FLAT



HEAD TYPE SHAFT WITH WHISTLE NOTCH



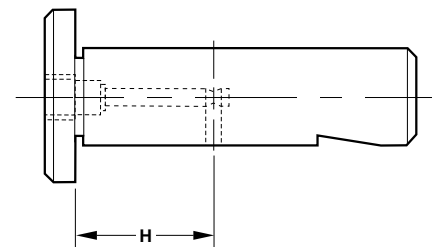
HEAD TYPE FIXTURE PIN WITH SET SCREW FLAT OR WHISTLE NOTCH

DIMENSIONAL INFORMATION						
CAD FILE NAME	PIN DIA	A	B	C	D	*G 1/4" INCR
SFFIXTPIN OR SWFIXTPIN	1/4	.249	.375	.250	.125	1"-2"
	3/8	.374	.500	.375	.125	1"-3"
	1/2	.499	.625	.375	.125	1"-3"
	5/8	.624	.750	.500	.156	1"-3"
	3/4	.749	.937	.500	.156	1"-4"
	7/8	.874	1.063	.500	.156	1"-4"
	1	.999	1.187	.500	.187	1-1/2"-5"
	1 1/8	1.124	1.375	.500	.187	1-1/2"-5"
	1 1/4	1.249	1.437	.500	.250	2"-6"
	1 3/8	1.374	1.625	.500	.250	2"-6"
1 1/2	1.499	1.750	.500	.250	2"-6"	

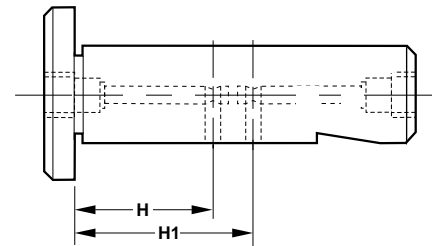
E = LOCATION OF FLAT OR WHISTLE NOTCH
 *G = LENGTH IN 1/4" INCREMENTS, OTHER LENGTHS AVAILABLE UPON REQUEST
 H = 1/2 G UNLESS OTHERWISE SPECIFIED
 H1 = LOCATION OF ADDITIONAL CROSSHOLE IF REQUIRED
LUBE OPTION:
 ADD "PT", "PT2" OR "RPT" AFTER PIN TYPE

Type	Description
SF	HARDENED AND GROUND, SET SCREW
SFS	STAINLESS, SET SCREW
SFU	MILD STEEL, SET SCREW
SFP	PREHARDENED, SET SCREW
SW	HARDENED AND GROUND, WHISTLE NOTCH
SWS	STAINLESS, WHISTLE NOTCH
SWU	MILD STEEL, WHISTLE NOTCH
SWP	PREHARDENED, WHISTLE NOTCH

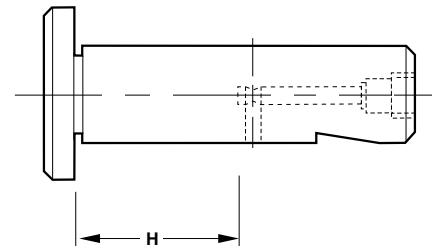
PIPE TAP LUBE OPTION = PT



PIPE TAP LUBE OPTION = PT2



PIPE TAP LUBE OPTION = RPT



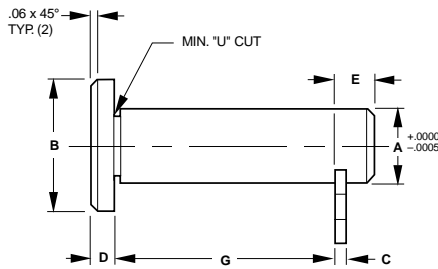
ORDERING INFORMATION

Specify: Pin Dia. — Length — Type — Lube Option — "E" Dim — "H" Dim — "H1" Dim

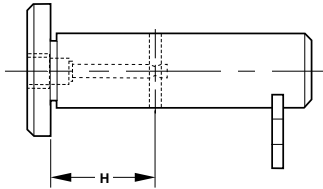
Example: 34-212-SWP-PT-2

ALL PIN DIMENSIONS ARE GIVEN AS FRACTIONS. 34= 3/4, 212 = 2-1/2, 2 = 2

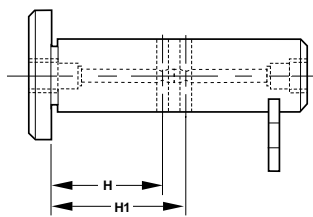
Head Type Fixture Pin with Retainer



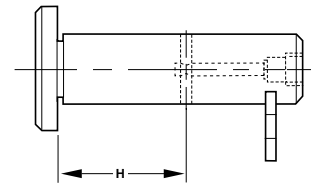
PIPE TAP LUBE OPTION = PT



PIPE TAP LUBE OPTION = PT2



PIPE TAP LUBE OPTION = RPT



HEAD TYPE FIXTURE PIN WITH RETAINER

DIMENSIONAL INFORMATION								
CAD FILE NAME	PIN DIA.	A	B	C	D	E	F	*G 1/4" INCR
SRFIXTPIN	1/4	.249	.375	.125	.125	.25	.375	1"-2"
	3/8	.374	.500	.125	.125	.25	.437	1"-3"
	1/2	.499	.625	.125	.125	.25	.500	1"-3"
	5/8	.624	.750	.125	.125	.25	.562	1"-3"
	3/4	.749	.937	.125	.125	.25	.625	1"-4"
	7/8	.874	1.063	.125	.125	.25	.688	1"-4"
	1	.999	1.187	.125	.187	.25	.750	1-1/2"-5"
	1 1/8	1.124	1.375	.250	.187	.38	.813	1-1/2"-5"
	1 1/4	1.249	1.437	.250	.250	.38	.875	2"-6"
	1 3/8	1.374	1.625	.250	.250	.38	.938	2"-6"
1 1/2	1.499	1.750	.250	.250	.38	1.000	2"-6"	

*G = LENGTH IN 1/4" INCREMENTS, OTHER LENGTHS AVAILABLE UPON REQUEST

H = 1/2 G UNLESS OTHERWISE SPECIFIED

H1 = LOCATION OF ADDITIONAL CROSSHOLE IF REQUIRED

LUBE OPTION:

ADD "PT", "PT2" OR "RPT" AFTER PIN TYPE

RETAINER OPTION:

RETAINER #E-2R SUPPLIED ON 1/4"-1" DIA PINS.

RETAINER #13-RD SUPPLIED ON 1-1/8" - 1-1/2" DIA PINS

UNLESS OTHERWISE SPECIFIED. DO NOT SPECIFY

WHEN STANDARD RETAINER IS REQUIRED.

SEE PAGE D-23 FOR ADDITIONAL RETAINER OPTIONS.

ORDERING INFORMATION

Specify: Pin Dia. — Length — Type — Lube Option — "E" Dim — "H" Dim — "H1" Dim — *Retainer Option

Example: 34-212-SR-PT

ALL PIN DIMENSIONS ARE GIVEN AS FRACTIONS. 34= 3/4, 212 = 2-1/2

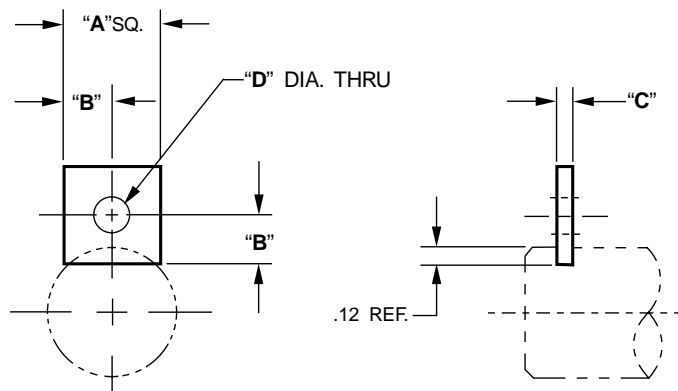
Type	Description
SR	HARDENED AND GROUND, SMOOTH, RETAINER
SRS	STAINLESS, SMOOTH, RETAINER
SRU	MILD STEEL, SMOOTH, RETAINER
SRP	PREHARDENED, SMOOTH, RETAINER

CAD Directory
Mach-Tool\FixtPin

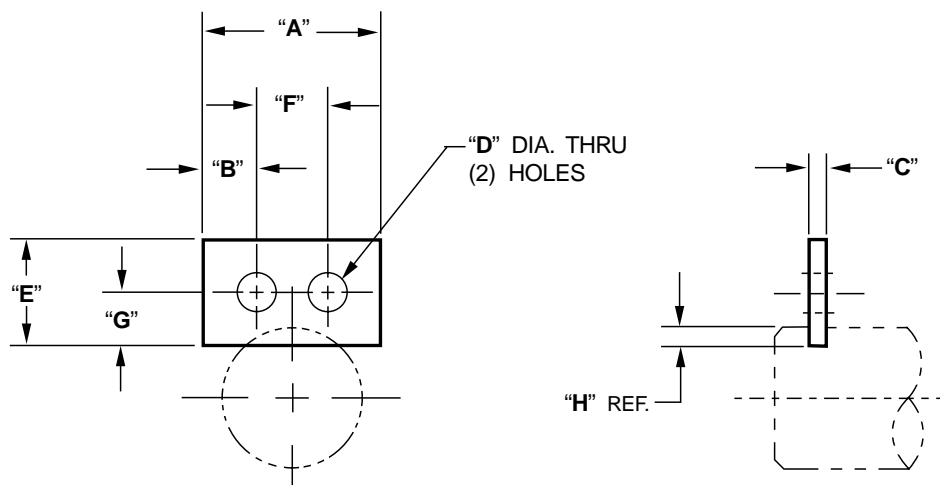
"Stretch"

The shortest standard component is given. You may "Stretch" the unit to the desired length.

Fixture Pin Retainers (Inch)



CAD FILE NAME	RETAINER NUMBER	"A" DIM	"B" DIM	"C" DIM	"D" DIM
E-RET	E1-R	.62	.31	.12	9/32
	E2-R	.75	.38	.12	9/32
	E3-R	1.00	.50	.12	9/32
	E4-R	.75	.38	.25	9/32
	E5-R	.75	.38	.12	11/32
	E6-R	.75	.38	.25	11/32
	E7-R	1.00	.50	.25	11/32
	E8-R	1.00	.50	.25	13/32
	E9-R	1.25	.62	.25	13/32
	E10-R	1.50	.75	.25	17/32



CAD FILE NAME	RETAINER NUMBER	"A" DIM	"B" DIM	"C" DIM	"D" DIM	"E" DIM	"F" DIM	"G" DIM	"H" DIM
E-RET	E1-RD	1.25	.25	.12	9/32	.62	.75	.31	.12
	E2-RD	1.25	.38	.12	9/32	.75	.50	.38	.12
	E3-RD	1.50	.50	.12	9/32	1.00	.50	.50	.12
	E4-RD	1.25	.38	.25	9/32	.75	.50	.38	.12
	E5-RD	1.25	.32	.12	11/32	.75	.62	.38	.12
	E6-RD	1.50	.38	.12	11/32	.75	.75	.38	.12
	E7-RD	1.50	.38	.25	11/32	1.00	.75	.50	.25
	E8-RD	2.00	.44	.25	11/32	1.25	1.12	.62	.25
	E9-RD	1.75	.50	.25	13/32	1.00	.75	.50	.12
	E10-RD	2.00	.62	.25	13/32	1.25	.75	.62	.12
	E11-RD	2.50	.50	.25	13/32	1.50	1.50	1.00	.38
	E12-RD	2.50	.75	.25	17/32	1.50	1.00	.75	.12
	E13-RD	1.25	.32	.25	11/32	.75	.62	.38	.12