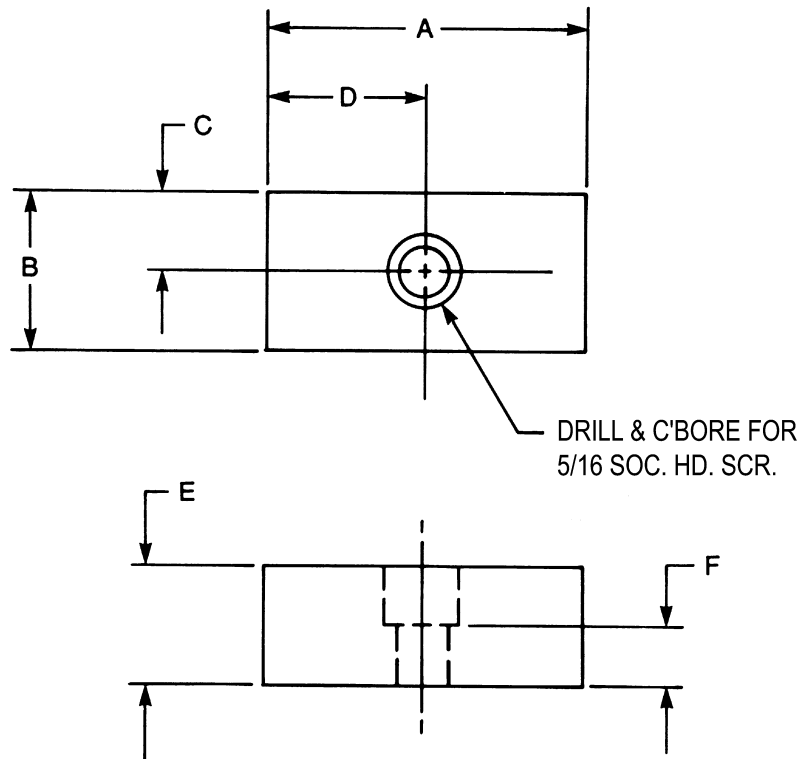


Fixture Keys



| CAD FILE NAME | PART NUMBER | A | B | C | D | E | F |
|---------------|------------------|------|-----------------|------|------|------|-----|
| E-428 | E428 | 2.00 | 1.003 1.000 | .500 | 1.00 | .75 | .38 |
| | E428-2562 | 2.00 | .999 .998 | .500 | 1.00 | .75 | .38 |
| | E428-4946 | 2.00 | 1.008/ 1.010 | .500 | 1.00 | .75 | .38 |
| E-429 | E429 | 2.00 | 1.003 1.000 | .500 | 1.00 | .50 | .12 |
| | E429-2562 | 2.00 | .999 .998 | .500 | 1.00 | .50 | .12 |
| | E429-4946 | 2.00 | 1.008/ 1.010 | .500 | 1.00 | .50 | .12 |
| E-430 | E430 | 3.00 | 1.003 1.000 | .500 | 1.50 | .75 | .38 |
| | E430-2562 | 3.00 | .999 .998 | .500 | 1.50 | .75 | .38 |
| | E430-4946 | 3.00 | 1.008/ 1.010 | .500 | 1.50 | .75 | .38 |
| E-431 | E431 | 3.00 | 1.003 1.000 | .500 | 1.50 | 1.00 | .62 |
| | E431-2562 | 3.00 | .999 .998 | .500 | 1.50 | 1.00 | .62 |
| | E431-4946 | 3.00 | 1.008/ 1.010 | .500 | 1.50 | 1.00 | .62 |

Material: Case Hardened Steel

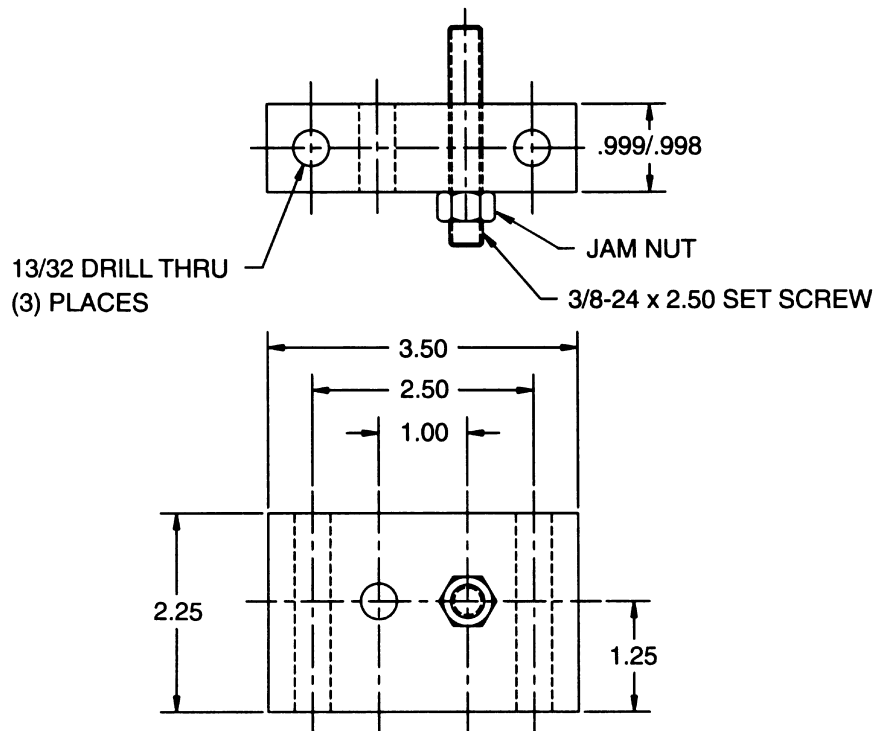
Adjusting Blocks

DESIGN FEATURES

- Rugged Steel Construction
- Ground Width for Keying to Machine Base
- Adjust and Hold Down from One Unit
- Use Several Units for Multi Axis Adjustment
- Special Versions Available

CAD File Name E3006

Part No. E-3006

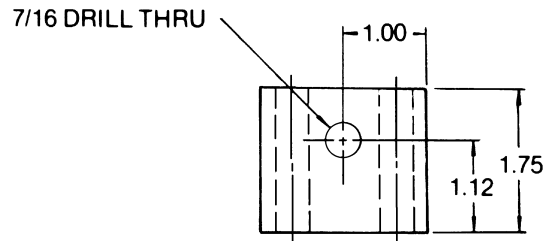
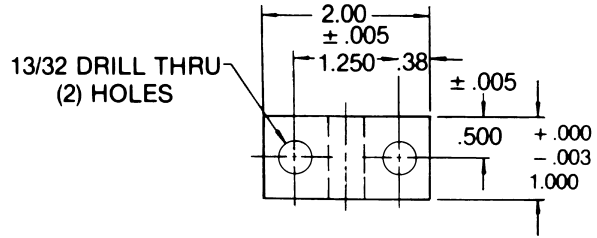


Adjusting Blocks



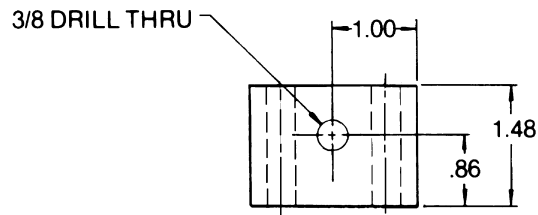
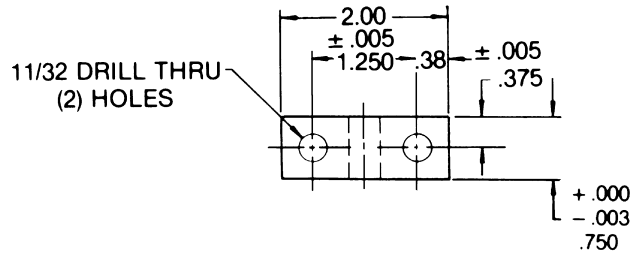
E&E SPECIAL PRODUCTS
7200 MILLER DRIVE
WARREN, MI 48092
586-978-3377 / 586-978-3378 FAX

CAD File Name E425
Part No. E425



FINISH: BLACK OXIDE

CAD File Name E426
Part No. E426



FINISH: BLACK OXIDE

CAD File Name E427
Part No. E427 Spacer

