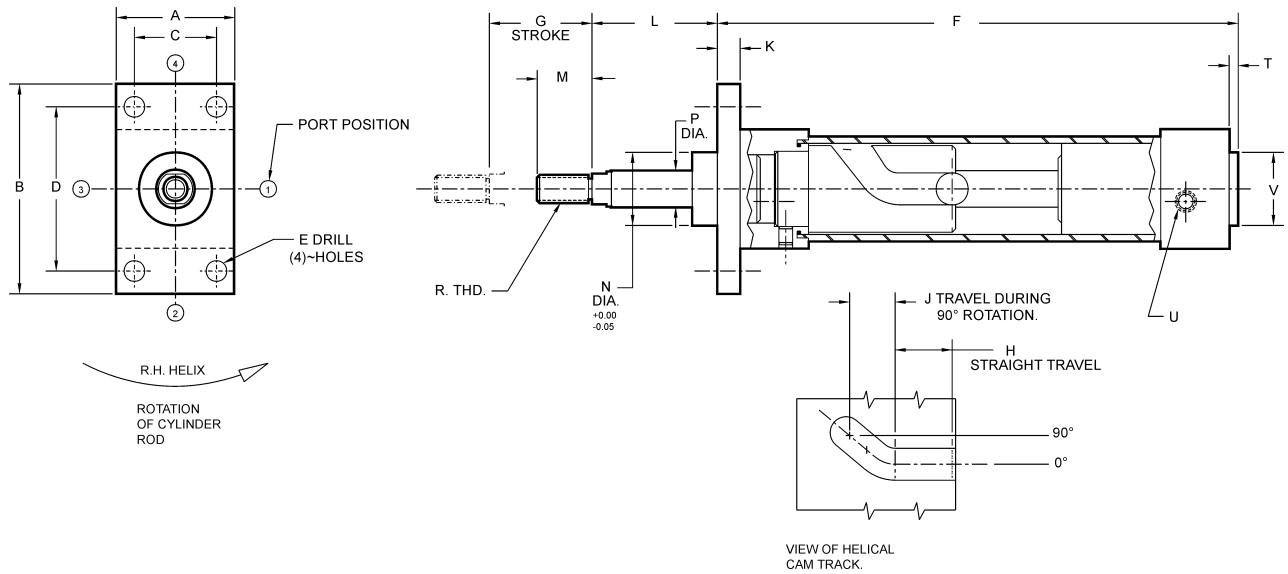


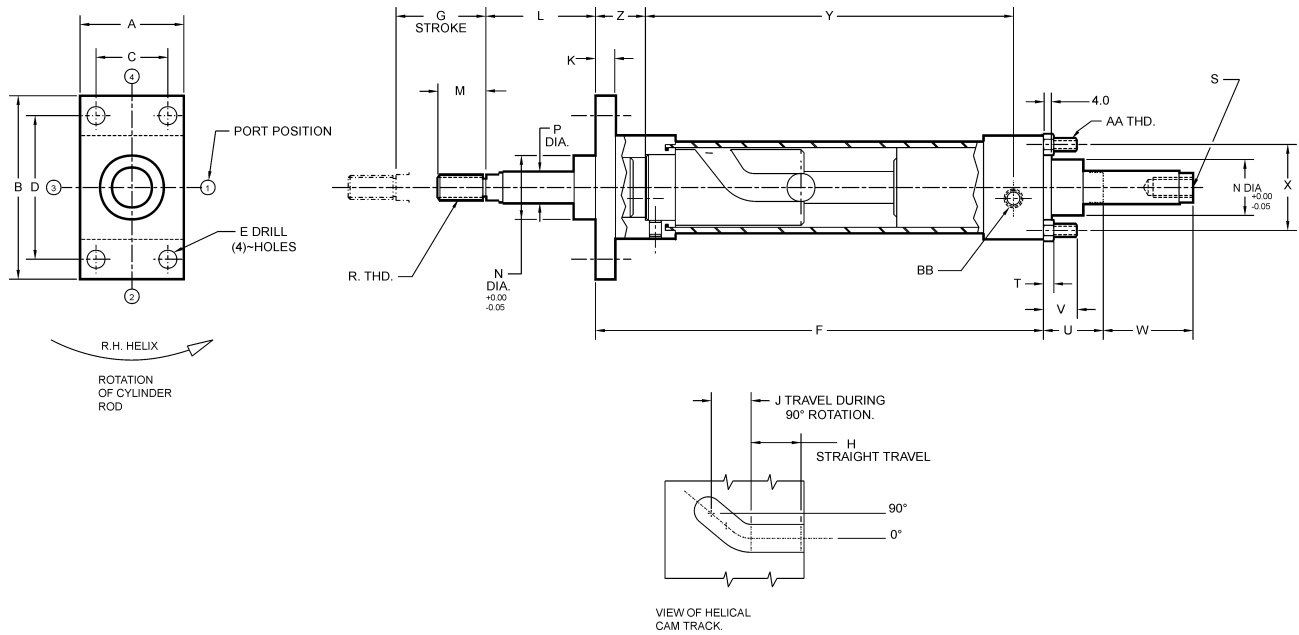
Metric Air Powered Internal Rota-Shaft



AIR POWERED																					
CAD FILE NAME	PART NUMBER	CYLINDER BORE	DIMENSIONS																		
			A	B	C	D	E	F	G	H	J	K	L	M	N	P	R	T	U	V	W
EM1640	EM16401-(R/L)	40	52.0	92.0	36.0	72.0	9.0	228.5	45.0	25.0	20.0	10.0	55.0	24.0	32.0	16.0	M12 x 1.25	4.0	(1/4) BSP/G	35.0	21.0
EM2050	EM20501-(R/L)	50	63.5	113.0	45.0	90.0	9.0	238.0	50.0	25.0	25.0	12.0	55.0	32.0	36.0	20.0	M16 x 1.50	4.0	(1/4) BSP/G	40.0	28.0
EM2063	EM20631-(R/L)	63	76.0	129.0	50.0	100.0	9.0	253.0	50.0	25.0	25.0	12.0	55.0	32.0	36.0	20.0	M16 x 1.50	4.0	(3/8) BSP/G	45.0	28.0
EM2580	EM25801-(R/L)	80	95.5	153.0	63.0	126.0	12.0	279.0	55.0	25.0	30.0	16.0	80.0	40.0	41.0	25.0	M20 x 1.50	4.0	(3/8) BSP/G	45.0	34.0

ISO 6431 AIR CYLINDER, MAXIMUM RECOMMENDED OPERATING PRESSURE = 10 bar
 MAX VELOCITY = 300 cm/min

Metric Air Powered Internal Rota-Shaft with Double Rod End



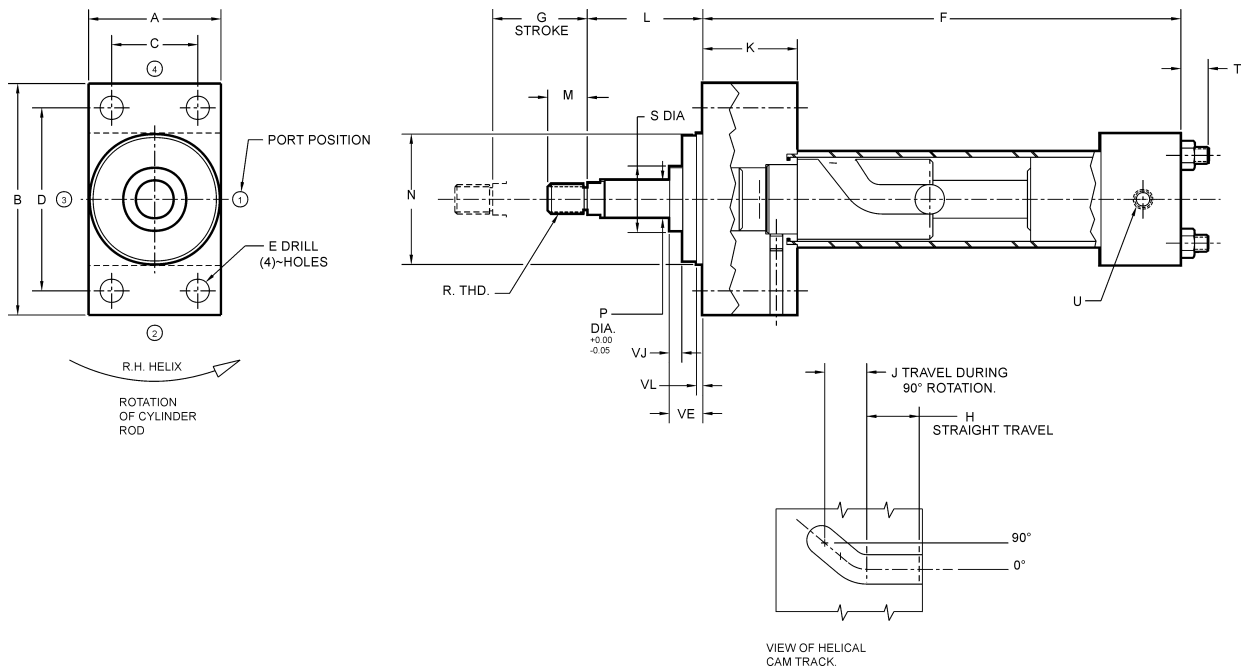
RIGHT HAND SHOWN, LEFT HAND ALSO STANDARD

AIR POWERED																
CAD FILE NAME	PART NUMBER	CYLINDER BORE	DIMENSIONS													
			A	B	C	D	E	F	G	H	J	K	L	M	N	P
EM1640-DE	EM-16401-DE-(R/L)	40	52.0	92.0	36.0	72.0	9.0	224.5	45.0	25.0	20.0	10.0	55.0	24.0	32.0	16.0
EM2050-DE	EM-20501-DE-(R/L)	50	63.5	113.0	45.0	90.0	9.0	234.0	50.0	25.0	25.0	12.0	55.0	32.0	36.0	20.0
EM2063-DE	EM-20631-DE-(R/L)	63	76.0	129.0	50.0	100.0	9.0	249.0	50.0	25.0	25.0	12.0	55.0	32.0	36.0	20.0
EM2580-DE	EM-25801-DE-(R/L)	80	95.5	153.0	63.0	126.0	12.0	275.0	55.0	25.0	30.0	16.0	80.0	40.0	41.0	25.0

AIR POWERED																
CAD FILE NAME	PART NUMBER	CYLINDER BORE	DIMENSIONS													
			R	S	T	U	V	W	X	Y	Z	AA	BB	CC		
EM1640-DE	EM-16401-DE-(R/L)	40	M12 x 1.25	M10 x 1.25	5.0	30.0	17.0	45.0	38.0	184.5	25.0	M6 x 1.00	(1/4) BSP/G	21.0		
EM2050-DE	EM-20501-DE-(R/L)	50	M16 x 1.50	M14 x 1.50	6.5	37.0	23.0	50.0	46.5	188.0	29.0	M8 x 1.25	(1/4) BSP/G	28.0		
EM2063-DE	EM-20631-DE-(R/L)	63	M16 x 1.50	M14 x 1.50	6.5	37.0	23.0	50.0	56.5	205.0	28.0	M8 x 1.25	(3/8) BSP/G	28.0		
EM2580-DE	EM-25801-DE-(R/L)	80	M20 x 1.50	M18 x 1.50	8.0	46.0	28.0	55.0	72.0	227.0	32.0	M10 x 1.50	(3/8) BSP/G	34.0		

ISO 6431 AIR CYLINDER, MAXIMUM RECOMMENDED OPERATING PRESSURE = 10 bar
MAX VELOCITY = 300 cm/min

Metric Hydraulic Powered Internal Rota-Shaft

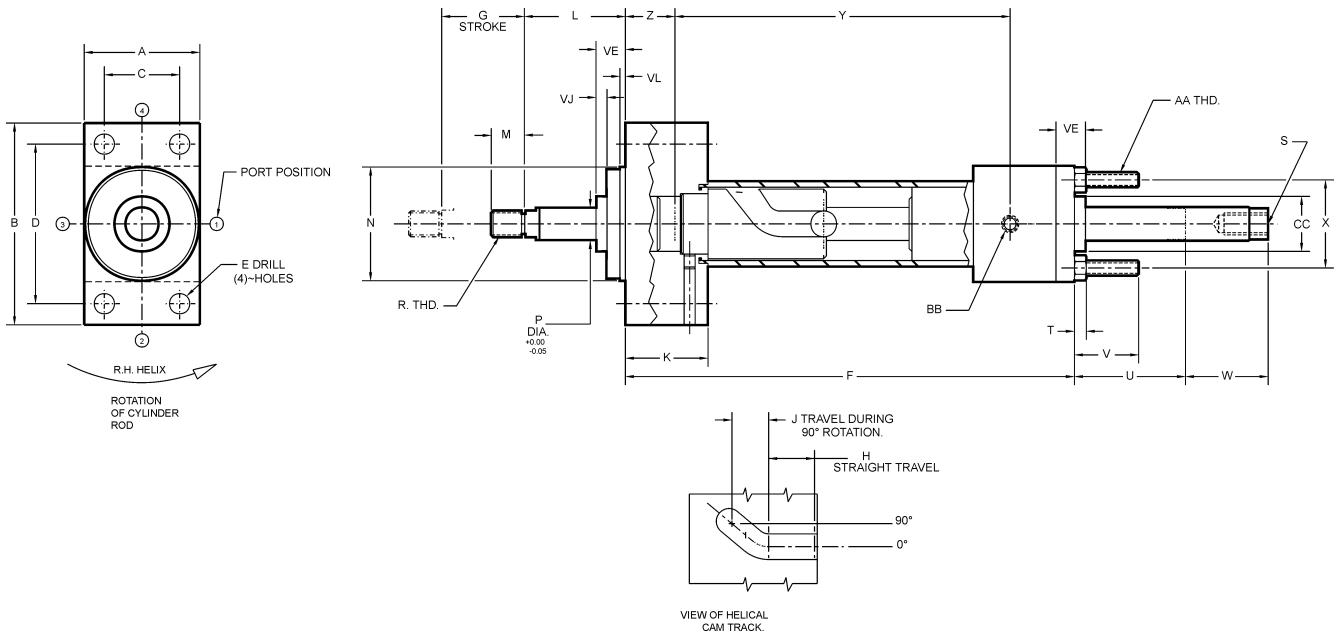


RIGHT HAND SHOWN, LEFT HAND ALSO STANDARD

HYDRAULIC POWERED																							
CAD FILE NAME	PART NUMBER	CYLINDER BORE	DIMENSIONS																				
			A	B	C	D	E	F	G	H	J	K	L	M	N	P	R	S	T	U	VE	VJ	VL
EMH1840H	EMH-18401-(R/L)	40	63.0	110.0	41.0	87.0	11.0	227.5	45.0	25.0	20.0	45.0	55.0	18.0	62.0	18.0	M14 x 1.50	30.0	13.0	(3/8) BSP/G	16.0	6.0	3.0
EMH2250H	EMH-22501-(R/L)	50	75.0	130.0	52.0	105.0	14.0	234.0	50.0	25.0	25.0	45.0	55.0	22.0	74.0	22.0	M16 x 1.50	34.0	17.0	(1/2) BSP/G	22.0	6.0	4.0
EMH2863H	EMH-28631-(R/L)	63	90.0	145.0	65.0	117.0	14.0	251.0	55.0	25.0	30.0	45.0	55.0	28.0	75.0	28.0	M20 x 1.50	42.0	17.0	(1/2) BSP/G	22.0	6.0	4.0

ISO 6020/2 HYDRAULIC CYLINDER, MAXIMUM RECOMMENDED OPERATING PRESSURE = 210 bar
 MAX VELOCITY = 300 cm/min

Metric Hydraulic Powered Internal Rota-Shaft with Double Rod End



RIGHT HAND SHOWN, LEFT HAND ALSO STANDARD

HYDRAULIC POWERED																	
CAD FILE NAME	PART NUMBER	CYLINDER BORE	DIMENSIONS														
			A	B	C	D	E	F	G	H	J	K	L	M	N	P	R
EMH1840-DE	EMH-18401-DE-(R/L)	40	63.0	110.0	41.0	87.0	11.0	244.5	45.0	25.0	20.0	45.0	55.0	18.0	62.0	18.0	M14 x 1.50
EMH2250-DE	EMH-22501-DE-(R/L)	50	75.0	130.0	52.0	105.0	14.0	257.0	50.0	25.0	25.0	45.0	55.0	22.0	74.0	22.0	M16 x 1.50
EMH2863-DE	EMH-28631-DE-(R/L)	63	90.0	145.0	65.0	117.0	14.0	274.0	55.0	25.0	30.0	45.0	55.0	28.0	75.0	28.0	M20 x 1.50

HYDRAULIC POWERED																
CAD FILE NAME	PART NUMBER	CYLINDER BORE	DIMENSIONS													
			S	T	U	V	W	X	Y	Z	VJ	VE	VL	AA	BB	CC
EMH1840-DE	EMH-18401-DE-(R/L)	40	M12 x 1.25	6.5	25.0	35.0	45.0	41.7	182.5	27.0	6.0	16.0	3.0	M6 X 1.00	(3/8) BSP/G	30.0
EMH2250-DE	EMH-22501-DE-(R/L)	50	M16 x 1.50	10.0	25.0	46.0	50.0	52.3	190.0	26.0	6.0	22.0	4.0	M8 X 1.25	(1/2) BSP/G	34.0
EMH2863-DE	EMH-28631-DE-(R/L)	63	M20 x 1.50	10.0	32.0	46.0	55.0	64.3	211.0	28.0	6.0	22.0	4.0	M8 X 1.25	(1/2) BSP/G	42.0

ISO 6020/2 HYDRAULIC CYLINDER, MAXIMUM RECOMMENDED OPERATING PRESSURE = 210 bar
 MAX VELOCITY = 300 cm/min

