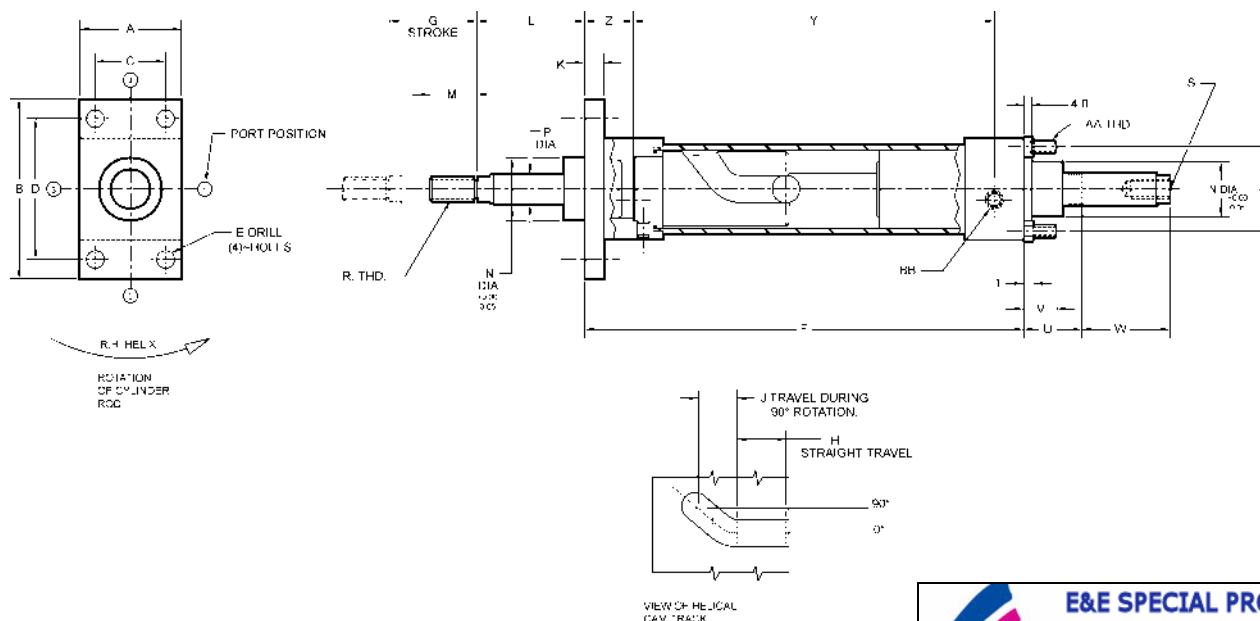


Metric Air Powered Internal Rota-Shaft with Double Rod End



Metric



RIGHT HAND SHOWN, LEFT HAND ALSO STANDARD

E&E SPECIAL PRODUCTS
 7200 MILLER DRIVE
 WARREN, MI 48092
E&ESP 586-978-3377 / 586-978-3378 FAX

AIR POWERED																
CAD FILE NAME	PART NUMBER	CYLINDER BORE	DIMENSIONS													
			A	B	C	D	E	F	G	H	J	K	L	M	N	P
EM1640-DE	EM-16401-DE-(R/L)	40	52.0	92.0	36.0	72.0	9.0	224.5	45.0	25.0	20.0	10.0	55.0	24.0	32.0	16.0
EM2050-DE	EM-20501-DE-(R/L)	50	63.5	113.0	45.0	90.0	9.0	234.0	50.0	25.0	25.0	12.0	55.0	32.0	36.0	20.0
EM2063-DE	EM-20631-DE-(R/L)	63	76.0	129.0	50.0	100.0	9.0	249.0	50.0	25.0	25.0	12.0	55.0	32.0	36.0	20.0
EM2580-DE	EM-25801-DE-(R/L)	80	95.5	153.0	63.0	126.0	12.0	275.0	55.0	25.0	30.0	16.0	80.0	40.0	41.0	25.0

AIR POWERED														
CAD FILE NAME	PART NUMBER	CYLINDER BORE	DIMENSIONS											
			R	S	T	U	V	W	X	Y	Z	AA	BB	CC
EM1640-DE	EM-16401-DE-(R/L)	40	M12 x 1.25	M10 x 1.25	5.0	30.0	17.0	45.0	38.0	184.5	15.0	M6 x 1.00	(1/4) BSP/G	21.0
EM2050-DE	EM-20501-DE-(R/L)	50	M16 x 1.50	M14 x 1.50	6.5	37.0	23.0	50.0	46.5	188.0	17.0	M8 x 1.25	(1/4) BSP/G	28.0
EM2063-DE	EM-20631-DE-(R/L)	63	M16 x 1.50	M14 x 1.50	6.5	37.0	23.0	50.0	56.5	205.0	16.0	M8 x 1.25	(3/8) BSP/G	28.0
EM2580-DE	EM-25801-DE-(R/L)	80	M20 x 1.50	M18 x 1.50	8.0	46.0	28.0	55.0	72.0	227.0	16.0	M10 x 1.50	(3/8) BSP/G	34.0

ISO 6431 AIR CYLINDER, MAXIMUM RECOMMENDED OPERATING PRESSURE = 10 bar
 MAX VELOCITY = 300 cm/min