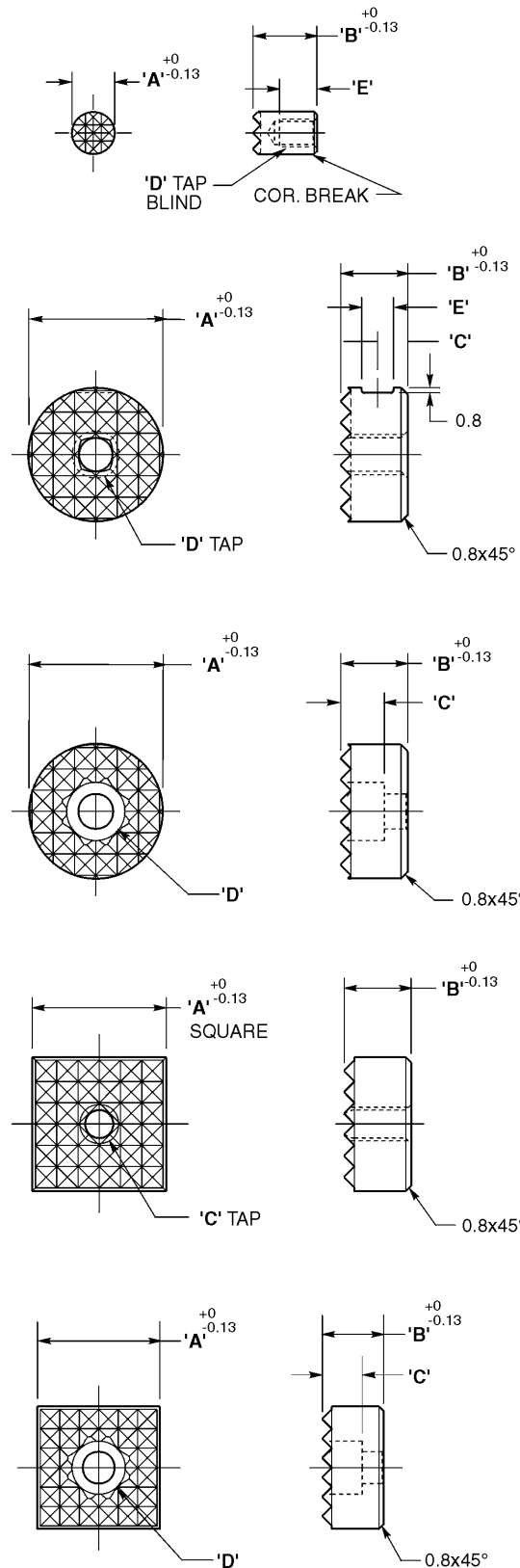


Metric Grippers "EMHS" High Speed Tool Steel

"EMHS" ROUND DESIGN							
CAD FILE NAME	PART NUMBER	A	B	C	D	E	TOOTH PATTERN
EMHS060	EMHS-060	6	10	-	M3 x 0.5	5	SUPER-FINE
	EMHS-062	6	12	-	M3 x 0.5	7	SUPER-FINE
EMHS080	EMHS-080	8	10	-	M4 x 0.7	5	SUPER-FINE
	EMHS-082	8	12	-	M4 x 0.7	7	SUPER-FINE
EMHS100	EMHS-100	10	10	4.5	M5 x 0.8	4.7	EX-FINE
	EMHS-102	10	12	6	M5 x 0.8	4.7	EX-FINE
EMHS120	EMHS-120	12	10	4.5	M5 x 0.8	4.7	FINE
	EMHS-122	12	12	6	M5 x 0.8	4.7	FINE
EMHS160	EMHS-160	16	10	4.5	M6 x 1.0	4.7	FINE
	EMHS-162	16	12	6	M6 x 1.0	4.7	FINE
EMHS200	EMHS-200	20	10	4.5	M6 x 1.0	4.7	FINE
	EMHS-202	20	12	6	M6 x 1.0	4.7	FINE
EMHS250	EMHS-250	25	10	4.5	M6 x 1.0	4.7	FINE
	EMHS-252	25	12	6	M6 x 1.0	4.7	FINE
"EMHS" ROUND DESIGN-C'BORE							
EMHS120C	EMHS-120-C	12	10	5.6	M4 SHCS	-	FINE
	EMHS-122-C	12	12	5.6	M4 SHCS	-	FINE
EMHS160C	EMHS-160-C	16	10	5.6	M4 SHCS	-	FINE
	EMHS-162-C	16	12	5.6	M4 SHCS	-	FINE
EMHS200C	EMHS-200-C	20	10	6.6	M5 SHCS	-	FINE
	EMHS-202-C	20	12	6.6	M5 SHCS	-	FINE
EMHS250C	EMHS-250-C	25	10	7.6	M6 SHCS	-	FINE
	EMHS-252-C	25	12	7.6	M6 SHCS	- </tr	

EMHS-SQUARE DESIGN					
CAD FILE NAME	PART NUMBER	A SQUARE	B	C	TOOTH PATTERN
EMHS9100	EMHS-9100	10	10	M5 x 0.8	EX-FINE
	EMHS-9102	10	12	M5 x 0.8	EX-FINE
EMHS9120	EMHS-9120	12	10	M5 x 0.8	FINE
	EMHS-9122	12	12	M5 x 0.8	FINE
EMHS9160	EMHS-9160	16	10	M6 x 1.0	FINE
	EMHS-9162	16	12	M6 x 1.0	FINE
EMHS9200	EMHS-9200	20	10	M5 x 0.8	FINE
	EMHS-9202	20	12	M5 x 0.8	FINE
EMHS9250	EMHS-9250	25	10	M6 x 1.0	FINE
	EMHS-9252	25	12	M6 x 1.0	FINE

EMHS-SQUARE-"C"-BORE DESIGN						
CAD FILE NAME	PART NUMBER	A SQUARE	B	C	D C'BORE	TOOTH PATTERN
EMHS9120C	EMHS-9120-C	12	10	5.6	M4 SHCS	FINE
	EMHS-9122-C	12	12	5.6	M4 SHCS	FINE
EMHS9160C	EMHS-9160-C	16	10	5.6	M4 SHCS	FINE
	EMHS-9160-C	16	12	5.6	M4 SHCS	FINE
EMHS9200C	EMHS-9200-C	20	10	6.6	M5 SHCS	FINE
	EMHS-9202-C	20	12	6.6	M5 SHCS	FINE
EMHS9250C	EMHS-9250-C	25	10	7.6	M6 SHCS	FINE
	EMHS-9252-C	25	12	7.6	M6 SHCS	FINE



CAD Directory
Mach-Tool\Met-Gripper

Note: The shortest standard component is given, you may "stretch" the unit to the desired length.

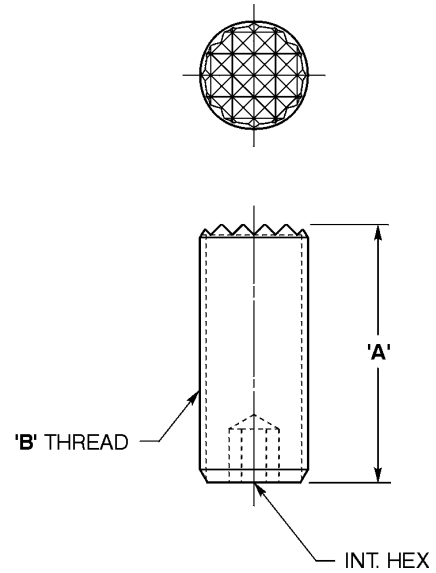
All dimensions are in mm

Metric Grippers "EMHS" High Speed Tool Steel

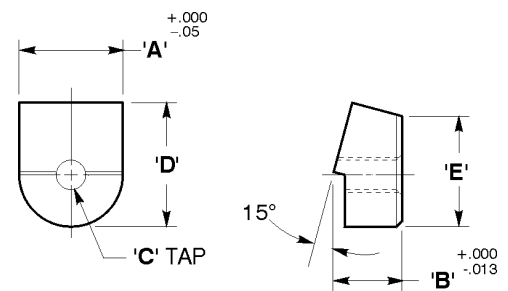


Metric

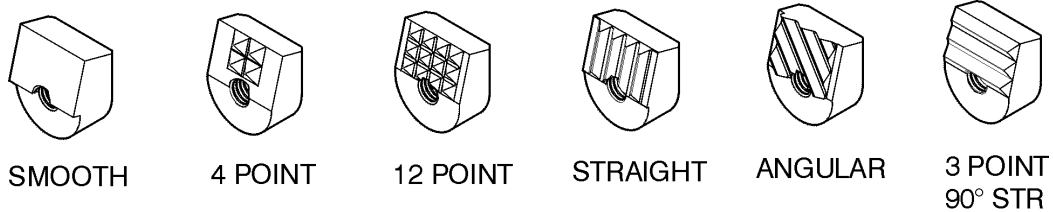
ENHS-ADJUSTABLE					
CAD FILE NAME	PART NUMBER	A	B	INT HEX	TOOTH PATTERN
EMHS1015040	EMHS-10150x40	40	M10 x 1.5	3	EX-FINE
EMHS1217525	EMHS-12175x25	25	M12 x 1.7	5	EX-FINE
EMHS1217540	EMHS-12175x40	40	M12 x 1.7	5	FINE
EMHS1620040	EMHS-16200x40	40	M16 x 2.0	6	FINE
EMHS2025040	EMHS-20250x40	40	M20 x 2.5	8	FINE



EMHS-ANGLE GRIP							
CAD FILE NAME	PART NUMBER	A	B	C	D	E	TOOTH PATTERN
EMHS1274	EMHS-127-4	14.3	9.5	M5 x 0.8	16.5	15.2	4-POINT
EMHS12712	EMHS-127-12	14.3	9.5	M5 x 0.8	16.5	15.2	FINE
EMHS1304	EMHS-130-4	14.3	9.5	M5 x 0.8	16.5	15.2	STRAIGHT
EMHS1455	EMHS-145-5	14.3	9.5	M5 x 0.8	16.5	15.2	ANGULAR
EMHS11010MM	EMHS-110-10MM	10.0	9.5	M5 x 0.8	16.5	15.2	SMOOTH
EMHS127410MM	EMHS-127-4-10MM	10.0	9.5	M5 x 0.8	16.5	15.2	4-POINT
EMHS130410MM	EMHS-130-4-10MM	10.0	9.5	M5 x 0.8	16.5	15.2	STRAIGHT
EMHS145510MM	EMHS-145-5-10MM	10.0	9.5	M5 x 0.8	16.5	15.2	ANGULAR



EMHS-110-10MM SHOWN



CAD Directory
Mach-Tool\Met-Gripper

Note: The shortest standard component is given, you may "stretch" the unit to the desired length.

All dimensions are in mm