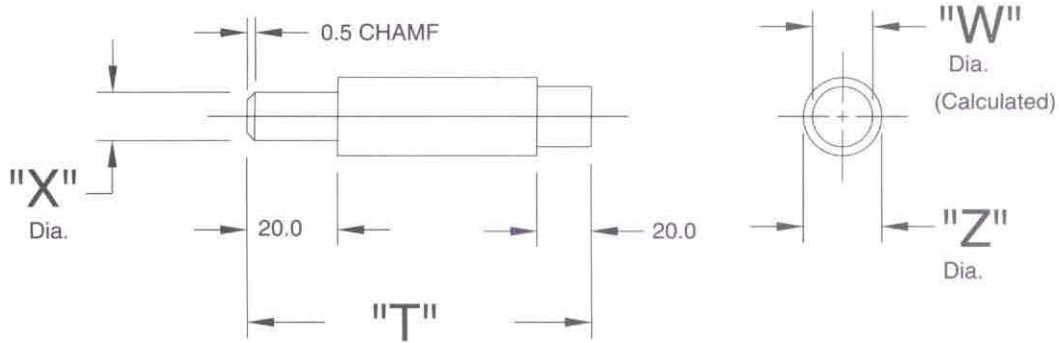


Style "A" & "B" MMC Plug Check Pin

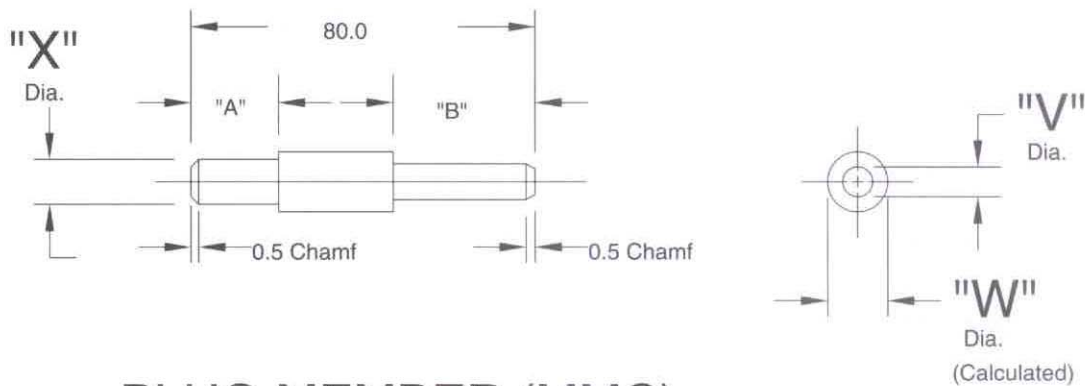


PLUG MEMBER (MMC)

Note: (MMC)=Maximum Mat'l. Condition

GAGE IDENTIFICATION: **"A"**
(WITH PILOT SHAFT)

NOM. DIA.	"T"
04.00-17.50	80MM
18.00-22.50	100MM
23.00-27.50	110MM
28.00-40.50	125MM
41.00-50.50	140MM

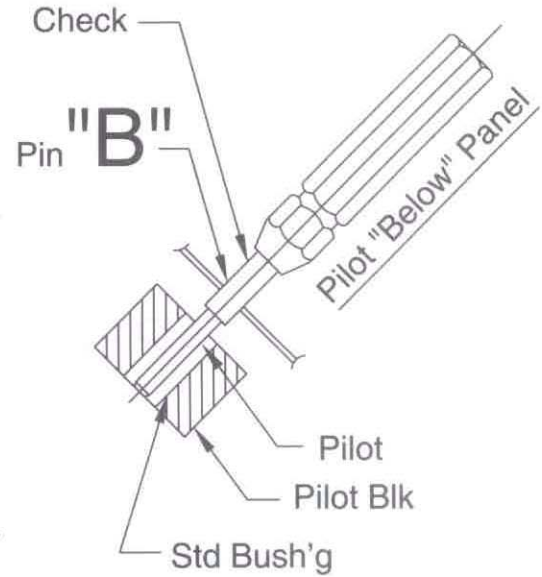
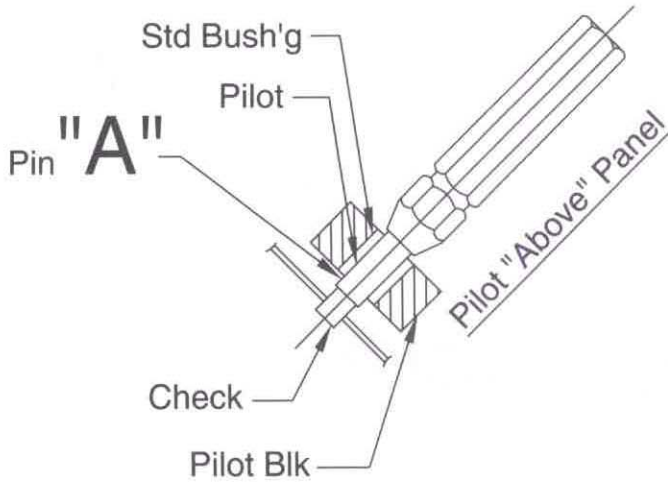


PLUG MEMBER (MMC)

GAGE IDENTIFICATION: **"B"**
(WITH PILOT LEAD)

NOM. DIA.	"A"	"B"
04.00-10.50	48MM	20MM
11.00-25.50	20MM	35MM

Style "A" & "B" MMC Plug Check Pin



PLUG PIN ASM'S

PIN ORDERING EXAMPLES

EXAMPLES HOLE SIZE: 9.00mm HOLE +0.03/-0.15

EXAMPLES LOCATION TOL: $\Phi 1.5$ (S) A B C

ORDER EXAMPLE FOR SINGLE ENDED PIN ASSEMBLIES, STYLES "A" "B"

PIN# "A" STANDARD PIN			
LOC.	<input type="checkbox"/>	MMC	<input checked="" type="checkbox"/>
		SCRIBE	<input type="checkbox"/>
GO/NO-GO	<input type="checkbox"/>	NO-GO	<input type="checkbox"/>
		GO	<input type="checkbox"/>
HOLE SIZE			9.00
LOCATION TOL.			-1.50
HOLE SIZE TOL.			-0.15
NOM. CALCULATED PIN SIZE			7.35
ORDER#	N	09.00 A	07.35
BUSHING CALL OUT	P64-	16-	16.00



PIN# "B" STANDARD PIN			
LOC.	<input type="checkbox"/>	MMC	<input checked="" type="checkbox"/>
		SCRIBE	<input type="checkbox"/>
GO/NO-GO	<input type="checkbox"/>	NO-GO	<input type="checkbox"/>
		GO	<input type="checkbox"/>
HOLE SIZE			9.00
LOCATION TOL.			-1.50
HOLE SIZE TOL.			-0.15
NOM. CALCULATED PIN SIZE			7.35
ORDER#	N	09.00 B	07.35
BUSHING CALL OUT	P20-	12-	4.00



SEE PAGES 13 & 14 FOR STANDARD SIZE LISTING