



Features:

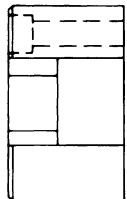
- 4140 Material
- Choice of Mounting Styles
- Black Oxide Finish
- Variety of Sizes
- Corresponding Couplers
- Metric Sizes Available Upon Request



Selecting Corresponding Cylinder Couplers

Screw Mount

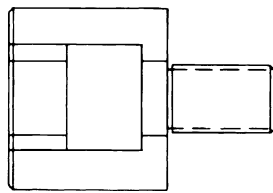
For rigid mounting with 3 socket head cap screws



Adapter

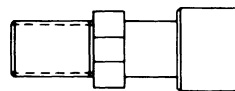
Thread Mount

Drill and tap driven member to accommodate



Male Thread

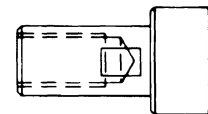
Comes in Rap and Non-Rap See couplers preceding



Coupler

Female Thread

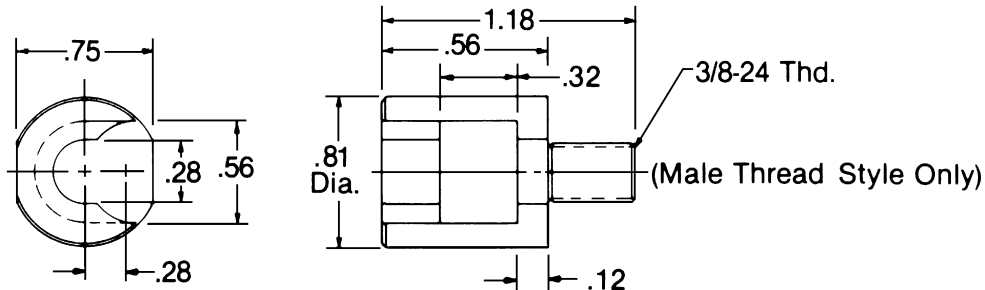
Comes in Rap and Non-Rap



SCREW MOUNT		THREAD MOUNT		MALE THREAD		FEMALE THREAD	
PART NO.				RAP	NON-RAP	RAP	NON-RAP
E148	OR	E151	USE WITH	E154	E155	—	—
E149	OR	E152	USE WITH	E156	E157	E160	E161
E150	OR	E153	USE WITH	E158	E159	E162	E163
E175		—	USE WITH	—	—	—	E165
E166		—	USE WITH	—	—	—	E164

Adapters

CAD File Name = E188
Part No. E188

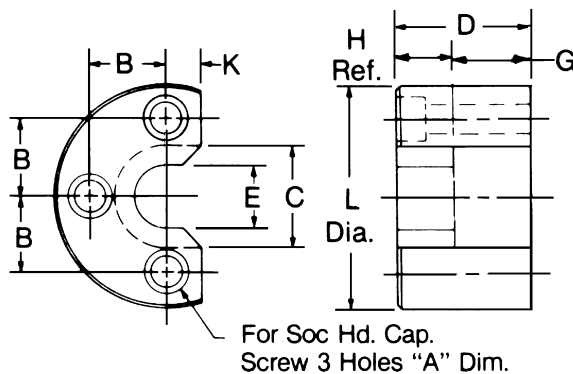


Mini-Thread Mount Adapter

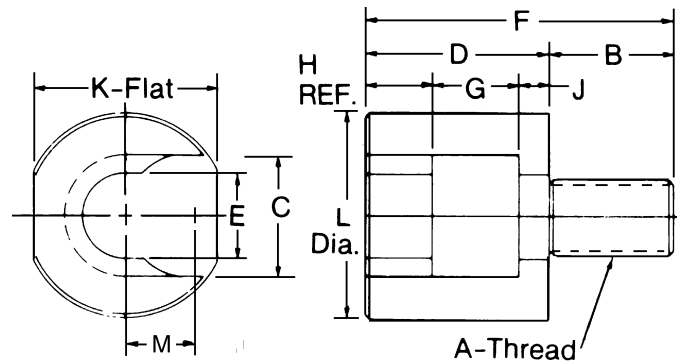
CAD Directory
 Cylinder-ACC\Adapters

Types

Screw Mount



Male Thread Mount



Click to download CAD

2DWG	3DWG	STP	CAD FILE NAME	MOUNT STYLE	PART NUMBER	DIMENSIONS											
						A	B	C	D	E	F	G	H	J	K	L	M
2DWG	3DWG	STP	E148	SCREW	E148	5/16	.75	.93	1.12	.50	—	.68	.43	—	.38	2.18	—
2DWG	3DWG	STP	E149	SCREW	E149	3/8	1.00	1.31	1.75	.81	—	1.00	.75	—	.44	2.93	—
2DWG	3DWG	STP	E150	SCREW	E150	1/2	1.19	1.56	2.00	1.06	—	1.12	.88	—	.56	3.44	—
2DWG	3DWG	STP	E175	SCREW	E175	3/4	2.00	2.56	2.50	1.81	—	1.38	1.12	—	.81	5.75	—
		STP	E166	SCREW	E166	3/4	2.00	2.18	2.10	1.44	—	1.26	.84	—	.81	5.75	—
2DWG	3DWG	STP	E151	THREAD	E151	7/16 - 20	.75	.93	1.50	.53	2.25	.68	.44	.37	1.31	1.44	.47
2DWG	3DWG	STP	E152	THREAD	E152	3/4 - 16	1.12	1.31	2.12	.81	3.25	1.00	.75	.37	1.75	1.93	.66
2DWG	3DWG	STP	E153	THREAD	E153	1 - 14	1.62	1.56	2.38	1.09	4.00	1.12	.88	.37	2.38	2.68	.78

Add -5788 to the end of the part number for stainless steel. (Example E-148-5788).

CAD Directory
 Cylinder-ACC\Adapters